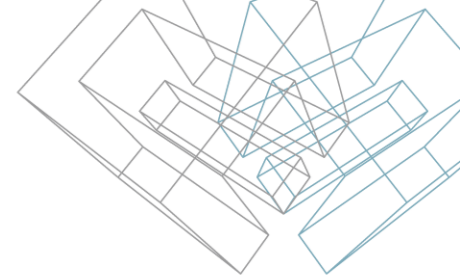




TOOLS 4 BIM DOCK INSTALLATION & ACTIVATION GUIDE

Network License Activation Instruction

Network License SERVER Installation Guide



1) Please choose the machine that is going to be network license SERVER. Please remember the name of this machine, because it will be used to configure client workstations. It can be any PC in your company with following Windows versions: Windows Vista, Windows 7, Windows 8, Windows Server 2003 and up.

Note: It is highly recommended to install NetworkLicenseServer on the same machine as Revit Server.

2) Install Network License Server [NetworkLicenceServer*.msi](#) to that machine.

3) Install Microsoft Internet Information Services (IIS):

<http://www.iis.net/learn/install> < The link shows how to install IIS.

4) You need to open TCP 8731 port in your firewall software. Please ask your administrator to do that.

5) Test NLM Server. Open web browser and enter URL:

<http://localhost:2468/Web/>

Note: If error page appears, please refer to the [Network License SERVER](#) page of this guide.

6) Open Activation tab in NLM Server.

7) Enter provided activation key in Activation key field and press Submit button.

8) To view license details click on Product's tab in NLM Server.



The screenshot shows the AGA-CAD web application interface. At the top, there is a navigation bar with a logo and the text 'AGA-CAD', and four tabs: 'Home', 'Activation', 'Products', and 'Usage'. The 'Activation' tab is currently selected. Below the tabs, the heading 'Add' is followed by the instruction 'To activate a new license, please enter an activation code.' There is a text input field labeled 'Activation Key' containing the placeholder text 'XXXXX-XXXXX-XXXXX-XXXXX-XXXXX', and a 'Submit' button to its right. At the bottom of the form, there are two links: 'History' and 'Manual Activation'.

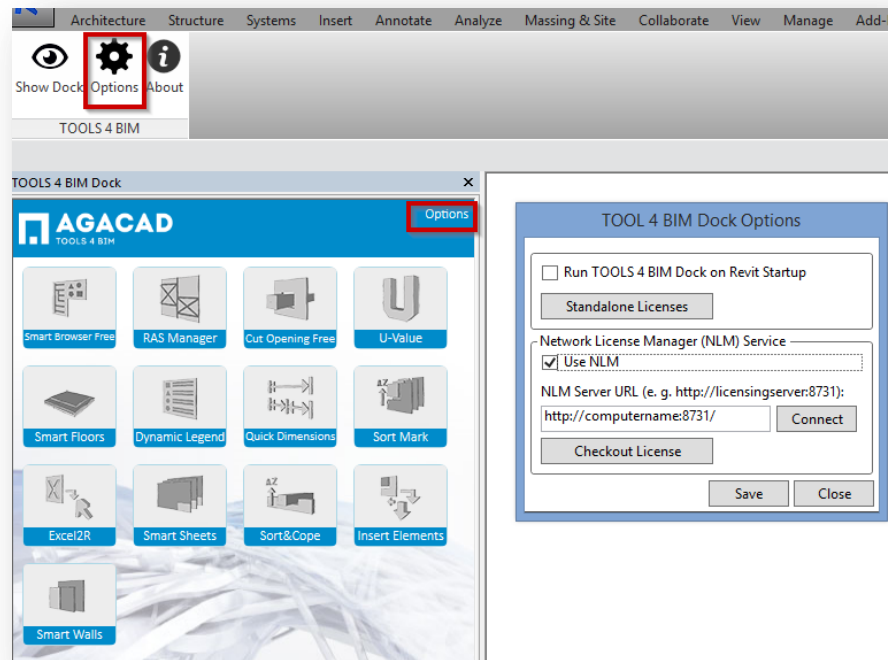
Revit User Network License Manager Installation Guide

- 1) Open Revit.
- 2) Click “TOOLS 4 BIM” tab.
- 3) Click “Options” button.
- 4) Select “Use NLM”.
- 5) Enter address of your Network License Server.

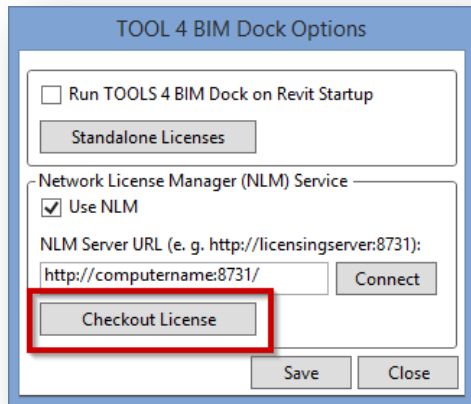
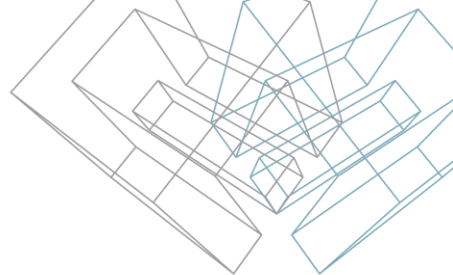
Note: This address is provided by your administrator, and refers to the computer with Network License SERVER installed.

This address must be in one of the following formats:
http://networklicenseservername:8731 or
http://ipaddressoflicenseserver:8731
- 6) Press “Connect” connection button – products have to be activated!

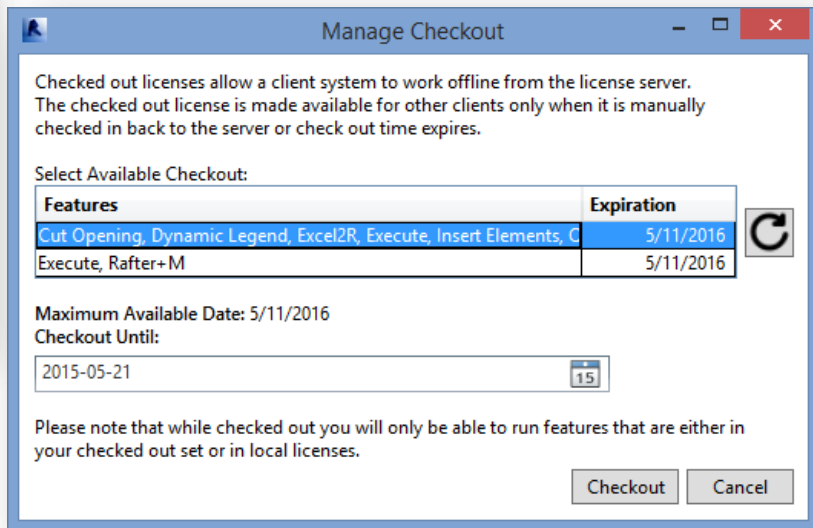
Note: if connection fails, please refer to the [Network License MANAGER](#) page of this guide.
- 7) You will find activated products under “Store” → “My Tools”.



Checkout the License



Checkout licenses allow user system to work offline from the license server.



NETWORK LICENSE ACTIVATION INSTRUCTIONS

Troubleshooting

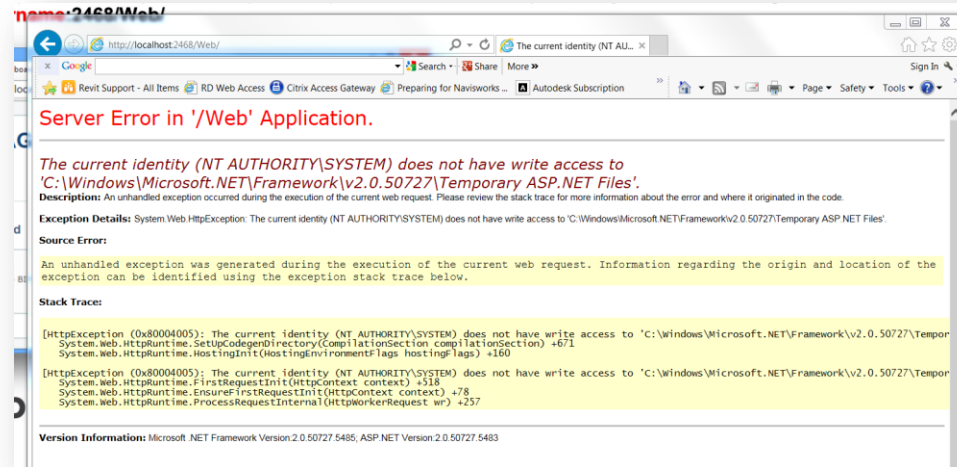
Network License SERVER Troubleshooting

1. IIS: The current identity does not have write access to Temporary ASP.NET Files

Error is displayed when opening <http://localhost:2468/Web/>:

The current identity (NT AUTHORITY\NETWORK SERVICE) does not have write access to 'C:\WINDOWS\Microsoft.NET\Framework\v2.0.50727\Temporary ASP.NET Files'

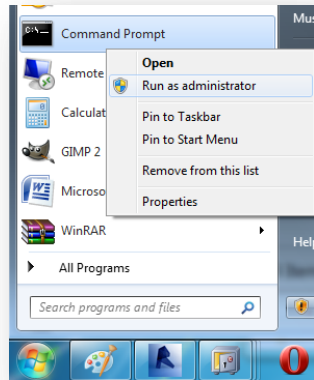
Example:



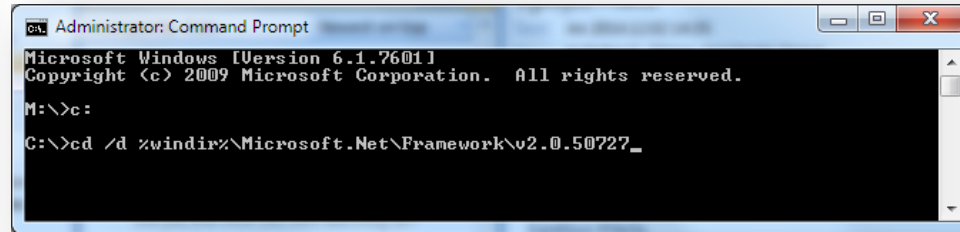
Network License SERVER Troubleshooting

Solution:

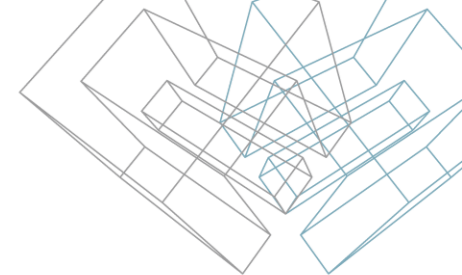
1) Launch Command Prompt (cmd) as Administrator:



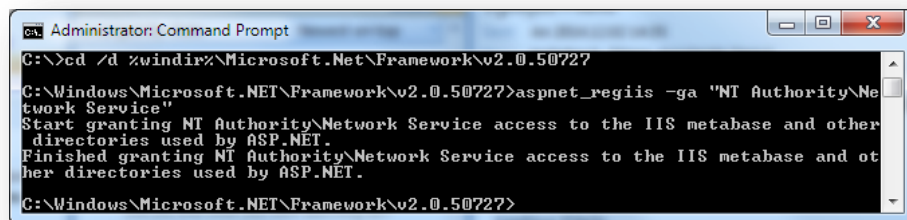
2) Enter command: `cd /d %windir%\Microsoft.Net\Framework\v2.0.50727:`



Network License SERVER Troubleshooting



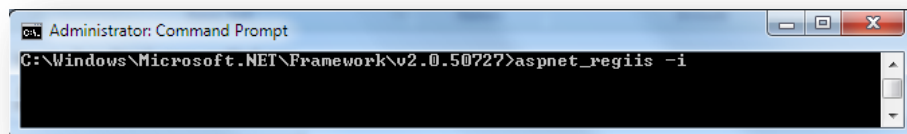
3) Enter command: *aspnet_regiis -ga "NT Authority\Network Service"*:



```
Administrator: Command Prompt
C:\>cd /d %windir%\Microsoft.Net\Framework\v2.0.50727
C:\Windows\Microsoft.NET\Framework\v2.0.50727>aspnet_regiis -ga "NT Authority\Network Service"
Start granting NT Authority\Network Service access to the IIS metabase and other directories used by ASP.NET.
Finished granting NT Authority\Network Service access to the IIS metabase and other directories used by ASP.NET.
C:\Windows\Microsoft.NET\Framework\v2.0.50727>
```

4) Check if page is loading now.

5) If it's not, enter command: *aspnet_regiis -i*

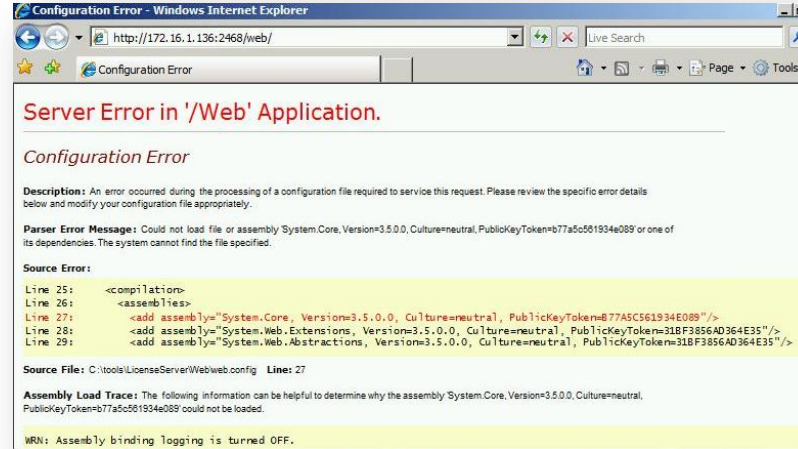


```
Administrator: Command Prompt
C:\Windows\Microsoft.NET\Framework\v2.0.50727>aspnet_regiis -i
```


Network License SERVER Troubleshooting

2. IIS: Configuration Error

Error is displayed when opening
<http://localhost:2468/Web/>:



Solution:

Download and install Microsoft .NET Framework 3.5:

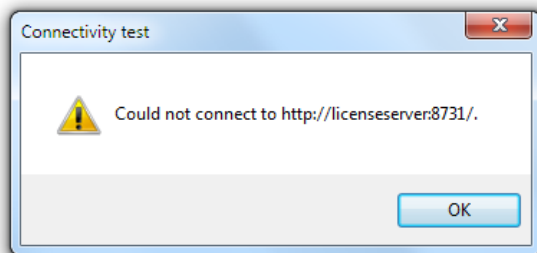
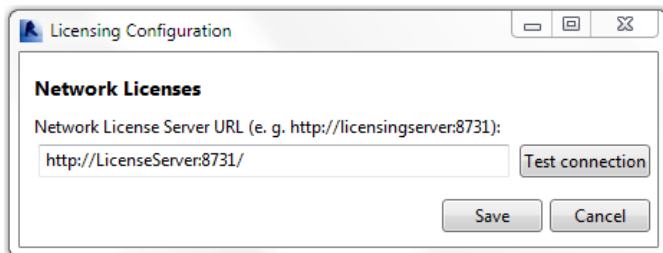
<http://www.microsoft.com/en-us/download/details.aspx?id=21>

Network License MANAGER

Troubleshooting

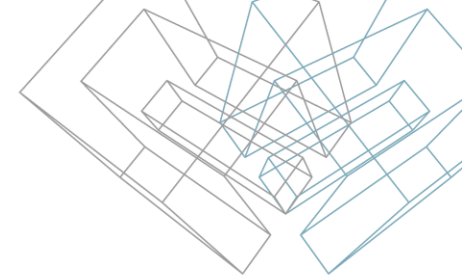
Could not connect to `http://<LicenseServer>:8731/`

Example:



Network License MANAGER

Troubleshooting



Solution:

1. Ensure that License Server is reachable:

- 1.1. Open Command Prompt.
- 1.2. Enter command ping LicenseServer (where LicenseServer is address of your license server without http:// and :8731).

Example:

```
Administrator: C:\Windows\system32\cmd.exe
C:\>ping LicenseServer
Ping request could not find host LicenseServer. Please check the name and try again.
C:\>_
```

- 1.3. If command returns error messages, contact your system administrator.

Network License MANAGER

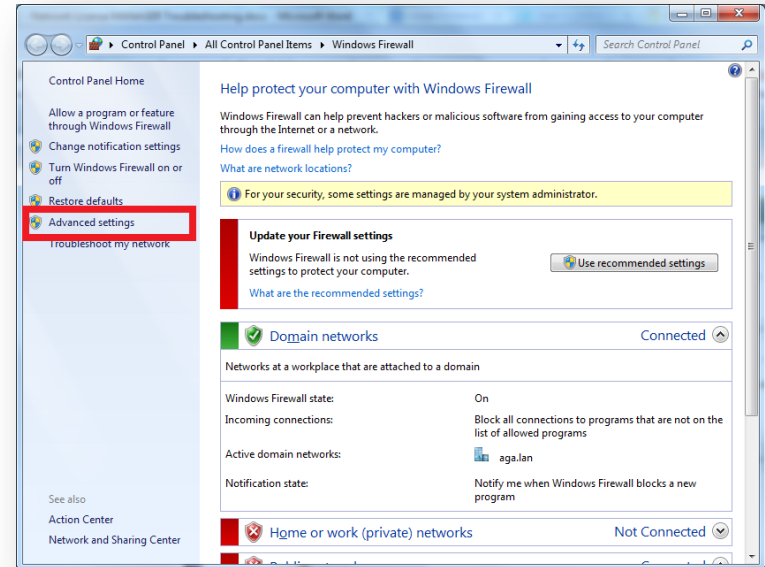
Troubleshooting

2. Ensure that 8731 TCP port is open on License Server machine.

2.1. If you are using 3rd party Firewall software, consult its documentation on how to open the port.

2.2. If you are using Windows Firewall take these steps:

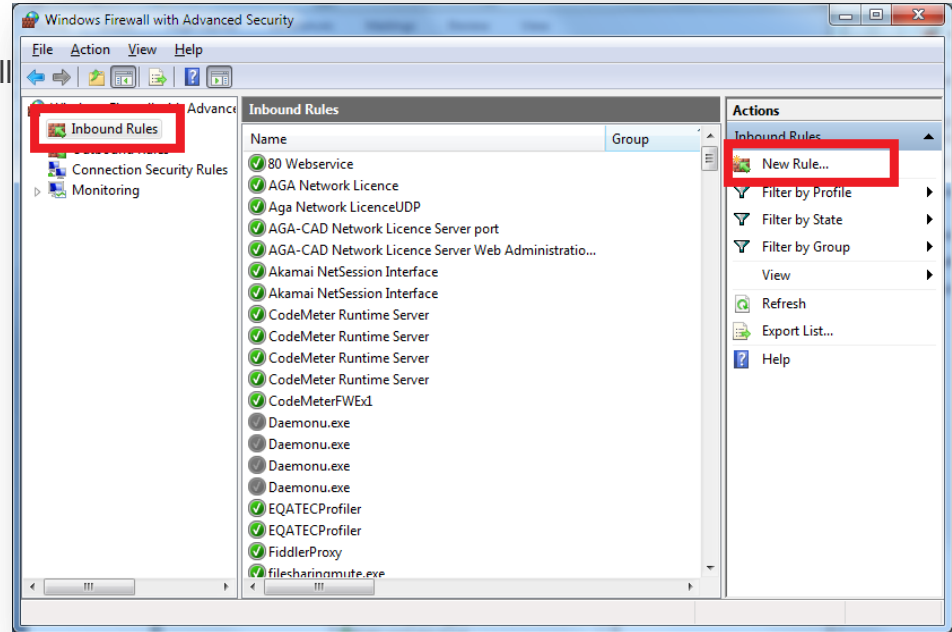
- a) Choose Start → Control Panel. Click the System and Security link, and then click Windows Firewall.
- b) **Click the Advanced Settings link.** This can be found in navigation panel on the left. If you are not logged in as the Administrator, you will be asked for the password. This will open the "Windows Firewall with Advanced Security" window:



Network License MANAGER

Troubleshooting

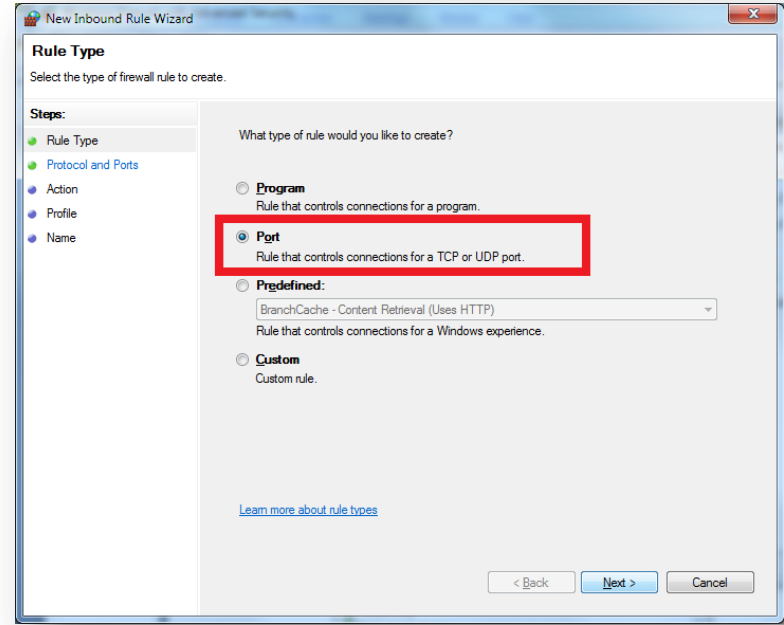
c) Select **"Inbound Rules"**. This is located in navigation panel on the left. You will see a list of all your allowed programs (if you have any). Click **"New Rule"** in the left panel:



Network License MANAGER

Troubleshooting

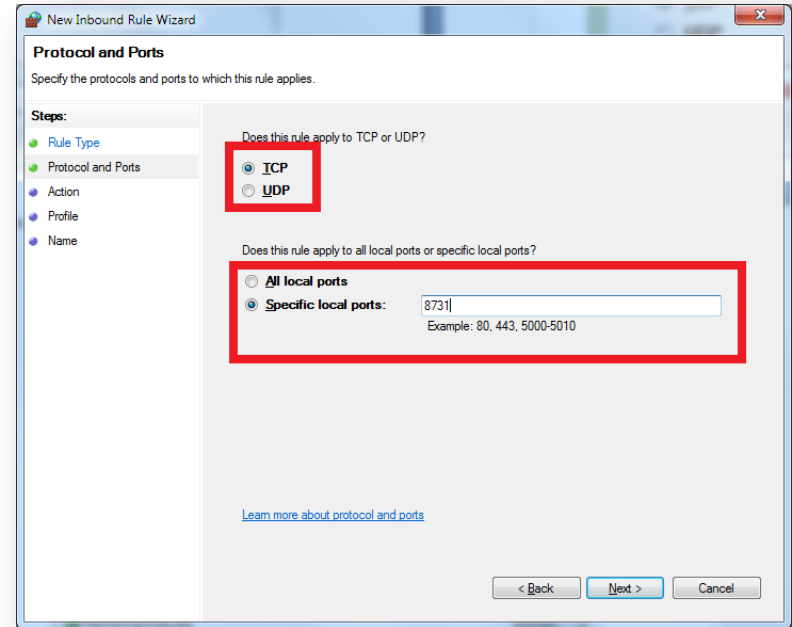
d) Select "Port" from the first screen of the wizard. This will allow you to open ports instead of trying to find a specific program. Click Next > to continue:



Network License MANAGER

Troubleshooting

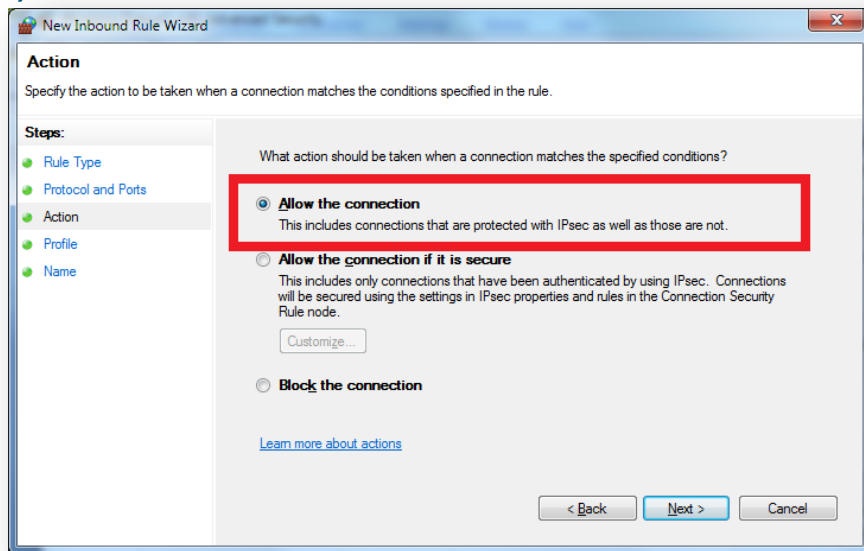
e) Choose TCP. Enter Specific local port: 8731:



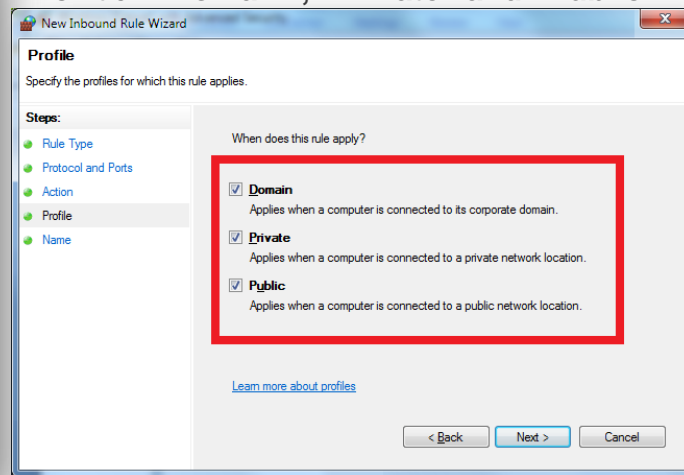
Network License MANAGER

Troubleshooting

f) Select "Allow the connection":



Then tick "Domain", "Private" and "Public"



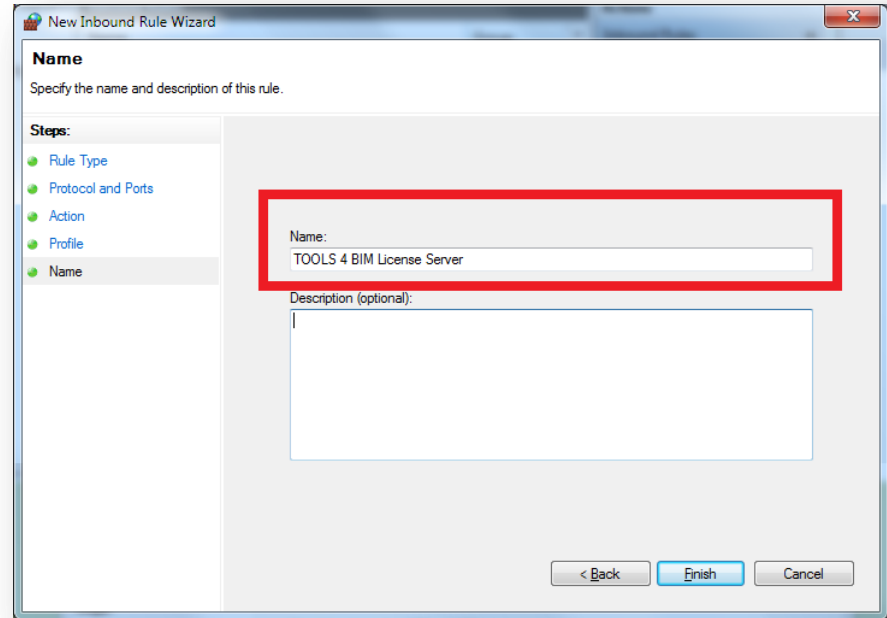
Network License MANAGER

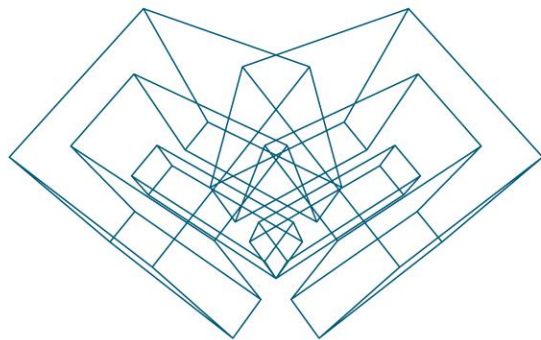
Troubleshooting

g) Enter a name for this rule and press "Finish":

ENJOY WORKING WITH OUR PRODUCTS!

If you have any questions, contact us:
support@aga-cad.com





AGA CAD Ltd

T: +370 618 55671 | E: support@aga-cad.com | W: www.aga-cad.com