

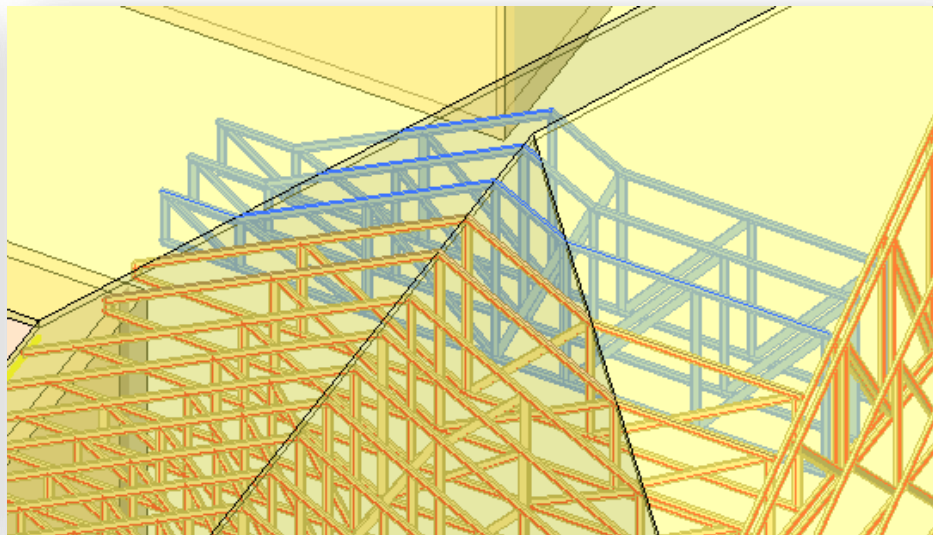
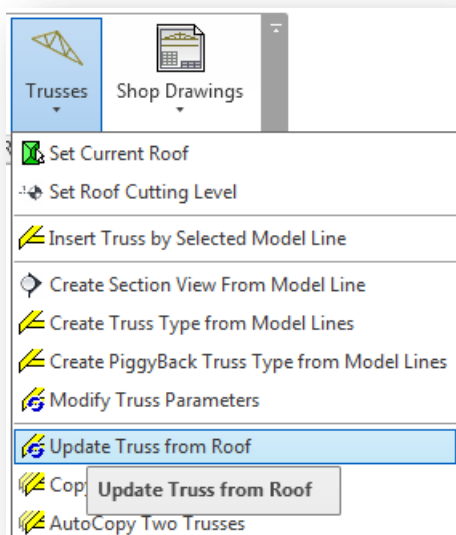


TRUSS+

Update Truss from Roof

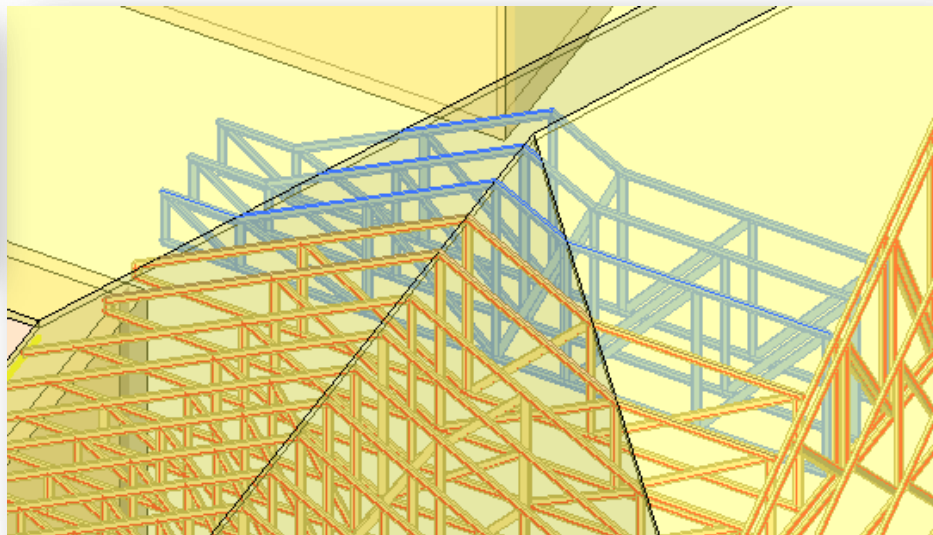
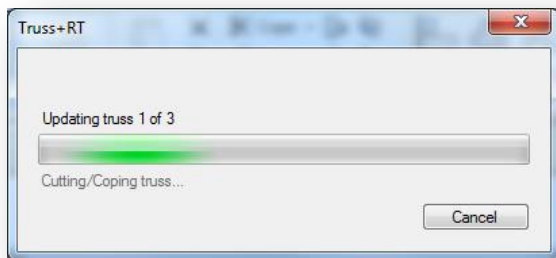
Update Truss from Roof

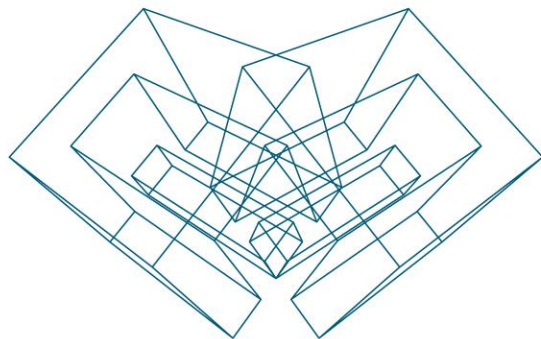
- Select one or more trusses to update.
- Choose *Update Truss from Roof* function from “Truss+” menu.



Update Truss from Roof

- *Update Truss from Roof* function runs and shows the number of updated trusses.





AGA CAD Ltd

T: +370 618 55671 | E: support@aga-cad.com | W: www.aga-cad.com