

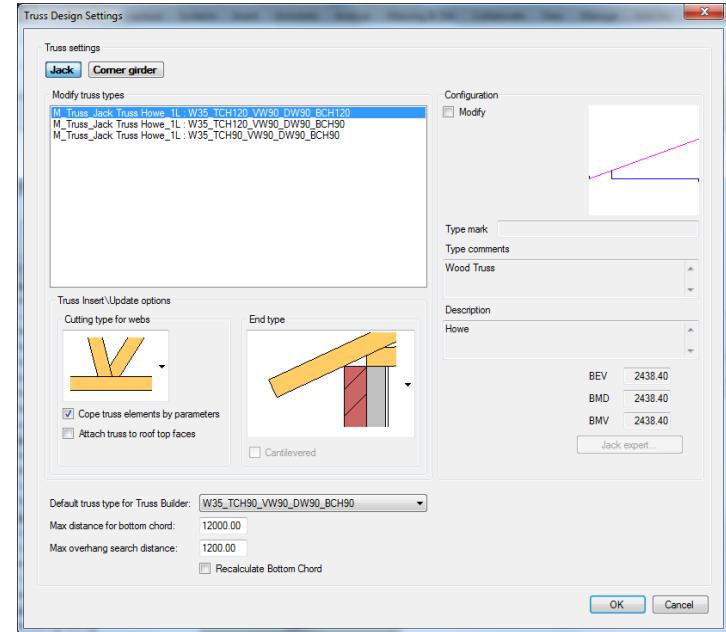
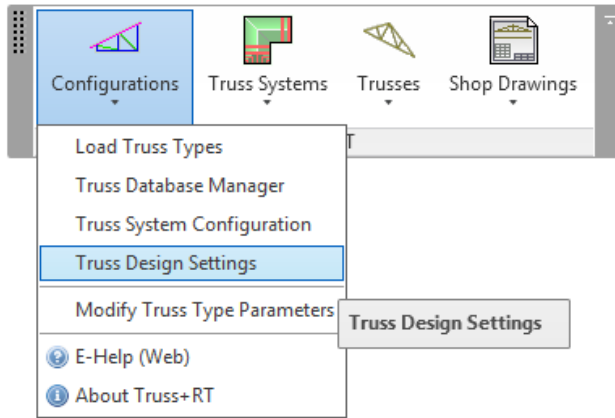
An abstract graphic composed of several overlapping, translucent blue and white geometric shapes, including cubes and wireframe cubes, arranged in a dynamic, non-orthogonal composition. The background is a dark, empty parking garage with concrete pillars and a blue-tinted floor.

TRUSS+

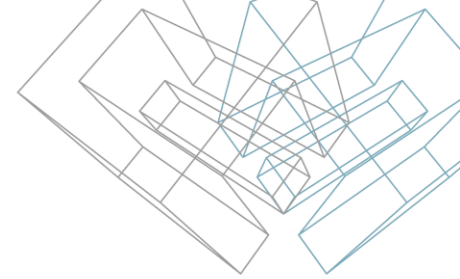
Truss Design Settings

Truss Design Settings

- Choose *Truss Design Settings* directly from “Truss+” menu.

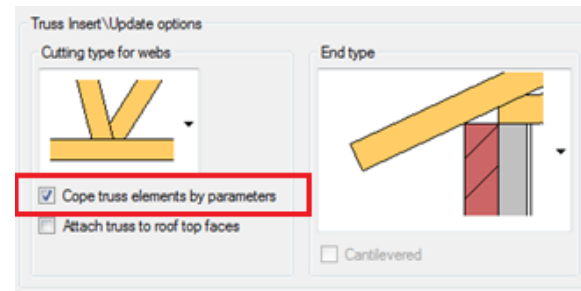
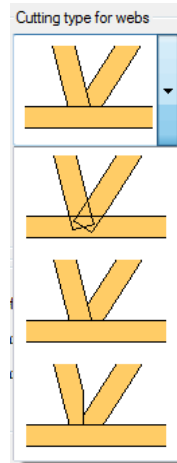
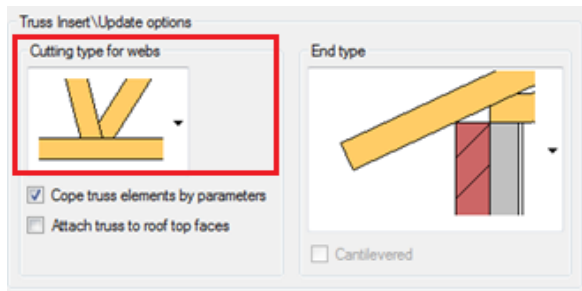


Truss Design Settings - Truss Insert\Update options

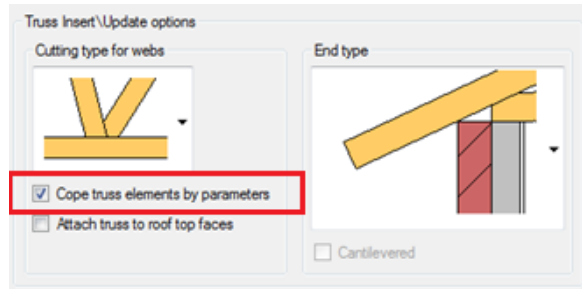
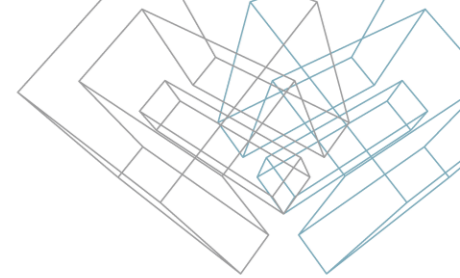


- Select cutting type for webs.

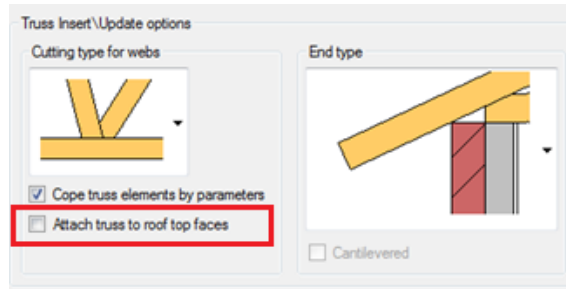
- Cut/Cope truss elements by selected cut type.



Truss Design Settings - Truss Insert\Update options



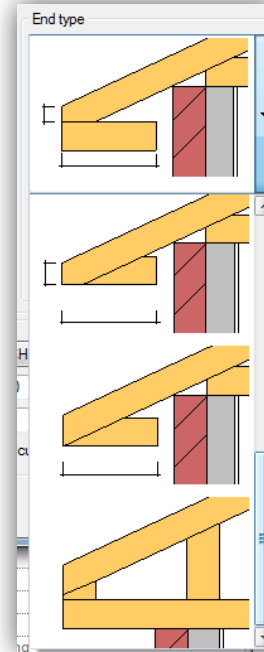
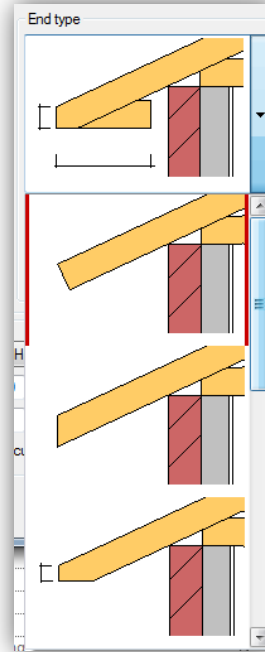
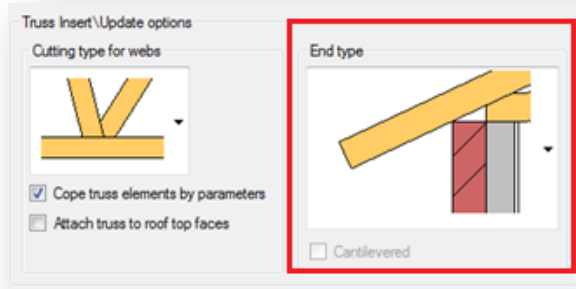
- Cut/Cope truss elements by selected cut type.



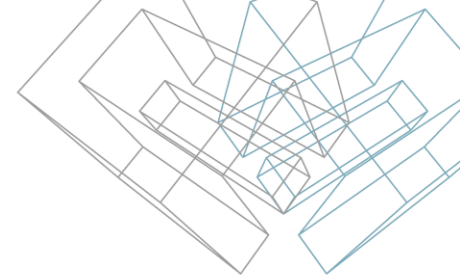
- Attach truss top chord to roof top face. If not – truss top chord will be attached to roof bottom face

Truss Design Settings - Truss Insert\Update options

- Select truss overhang cutting and framing type:



Truss Design Settings - Truss Create\Insert\Update options



Default truss type for Truss Builder:

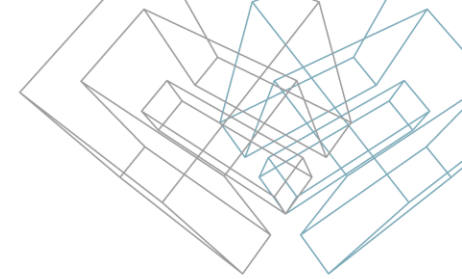
Max distance for bottom chord:

Max overhang search distance:

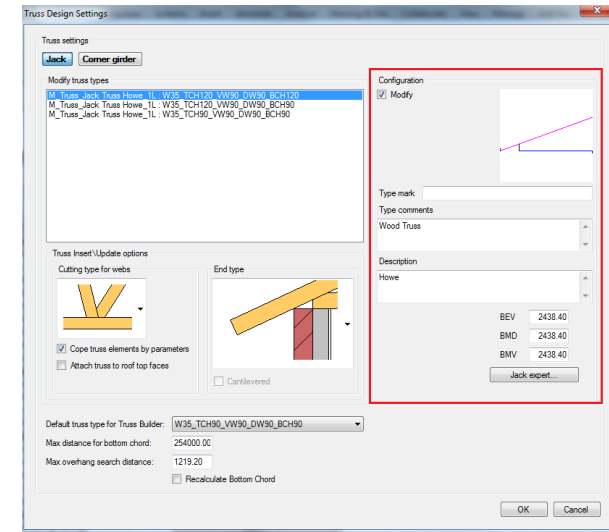
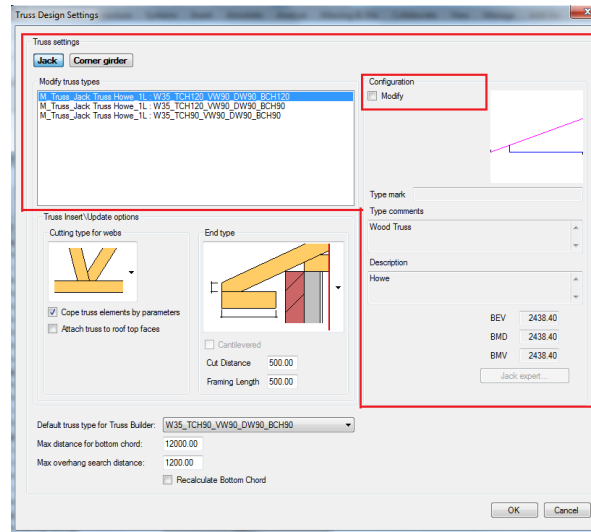
☐ Recalculate Bottom Chord

- Select default truss type to use it when creating new truss family with Truss Builder.
- Maximal length of bottom chord for Truss Builder. When creating new truss family by model line which is longer – bottom chord will be split in two tiles.
- Optimal value of 'Max overhang search distance' parameter allows inserting trusses inside a building without overhang. Value must be a little higher then maximal length of overhang in current project.
- Use **Recalculate Bottom Chord** when creating new wood truss family with Truss Builder.

Truss Design Settings – Predefine Web Position Rules for Jacks and Corner Girders

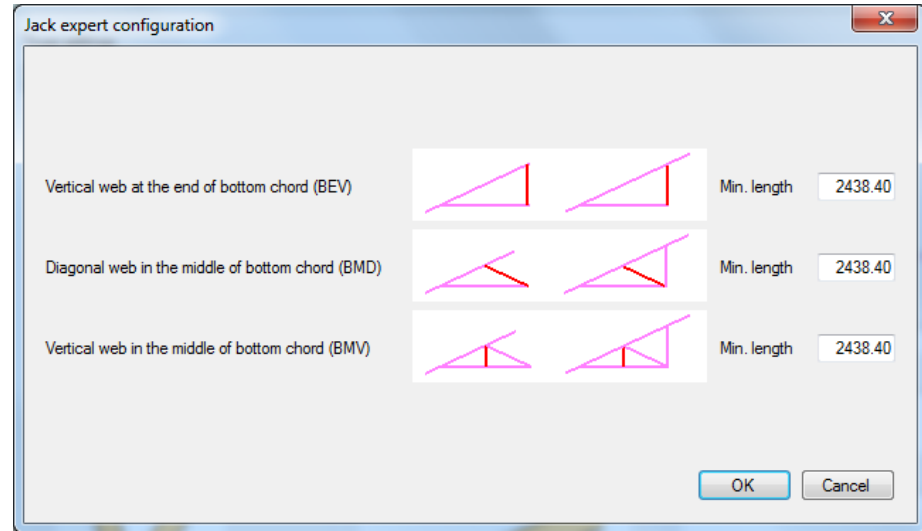
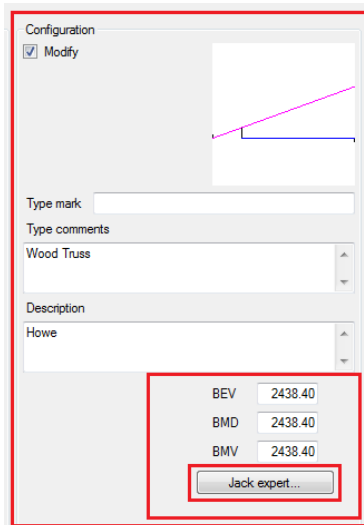


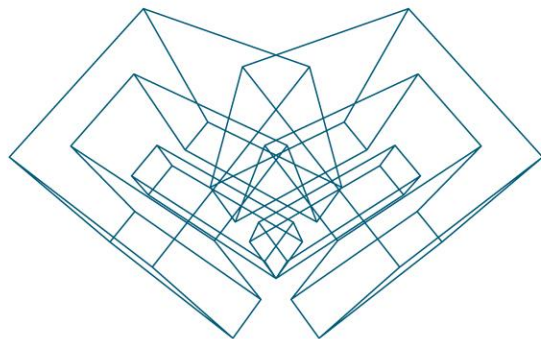
- Select truss type in Jack or Corner girder truss tabs to change web position rules and click *Modify* button.



Truss Design Settings – Predefine Web Position Rules for Jacks and Corner Girders

- Modify parameters or click on the *Jack expert* button for better understanding of parameters and their values.





AGA CAD Ltd

T: +370 618 55671 | E: support@aga-cad.com | W: www.aga-cad.com