

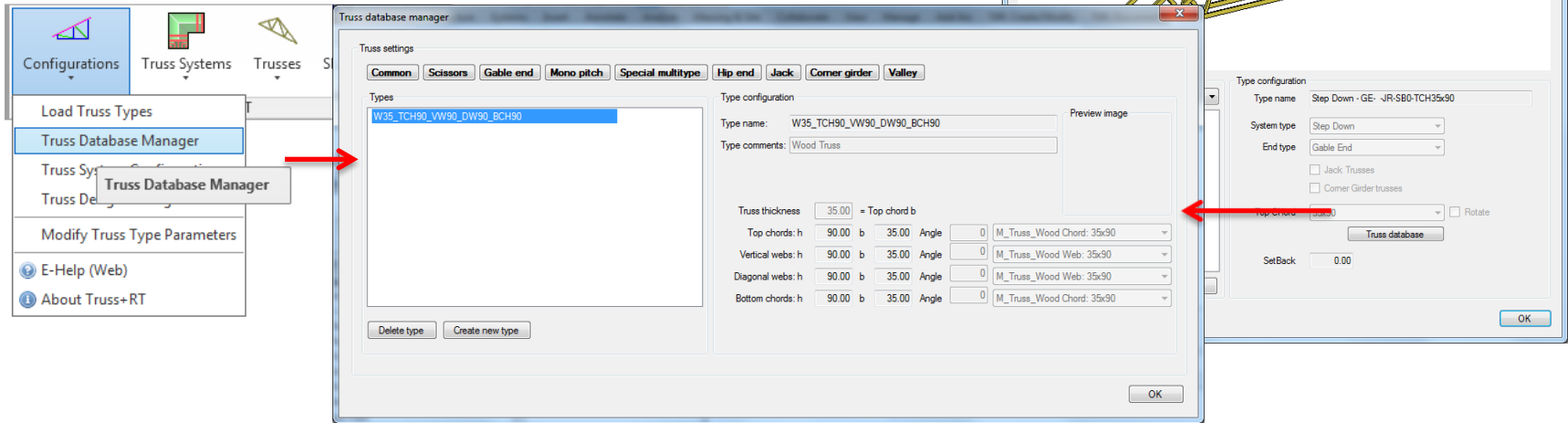


TRUSS+ Truss Database Manager

Starting Truss Database Manager

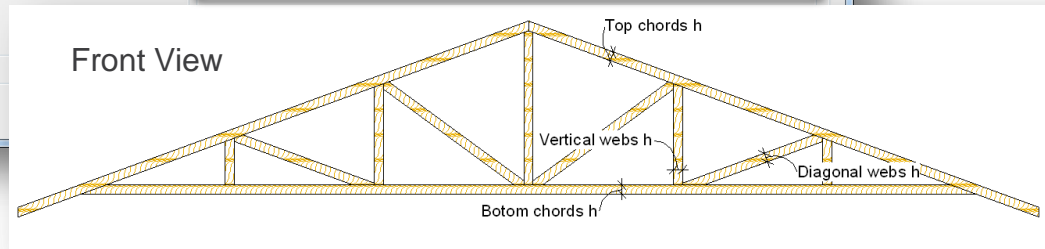
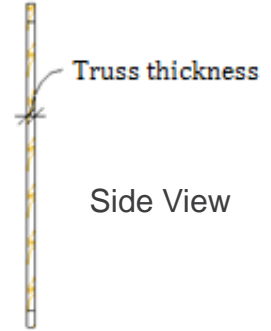
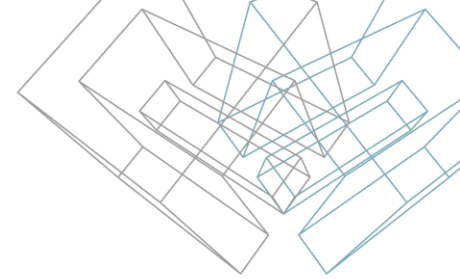
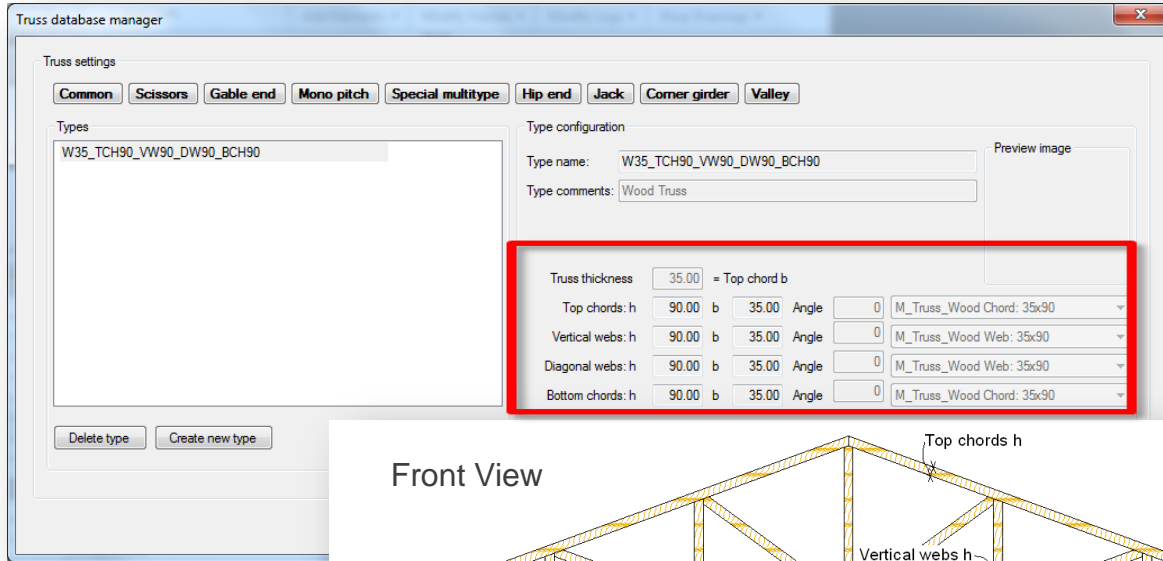
Two ways to run **Truss database manager**:

- Choose *Truss Database Manager* directly from “Truss+” menu;
- Choose *Truss database* from the ‘Truss system configuration’ window.



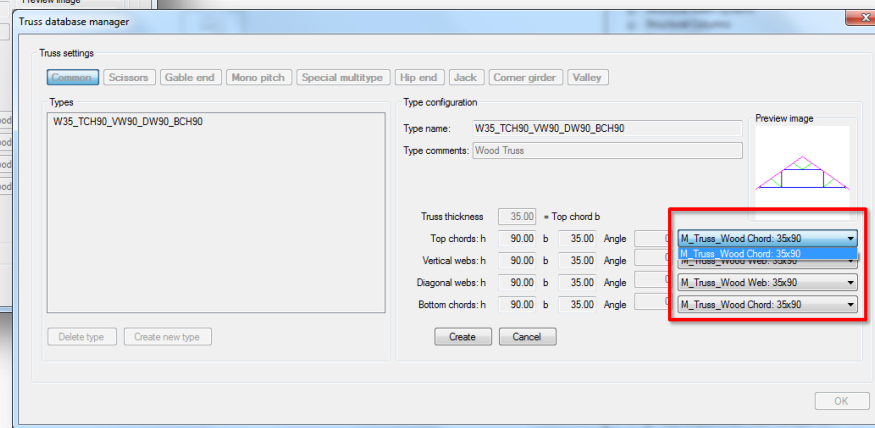
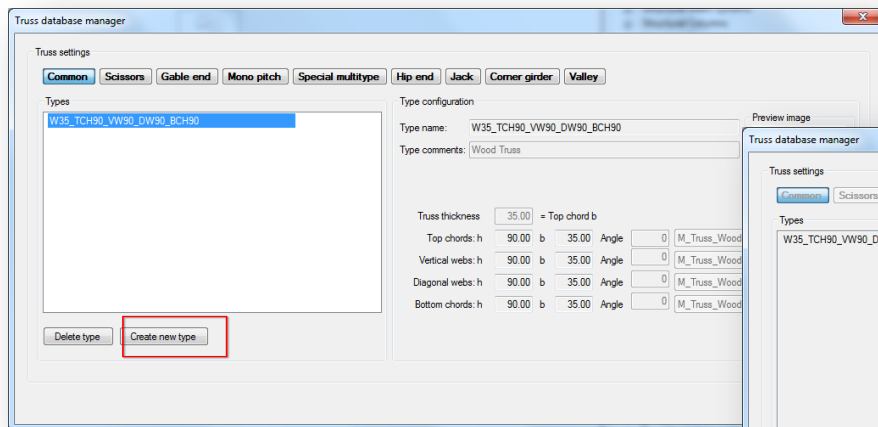
Parameters

Truss type parameter meanings are shown in pictures.
Parameter **Angle** predefines rotation angle of webs and chords.



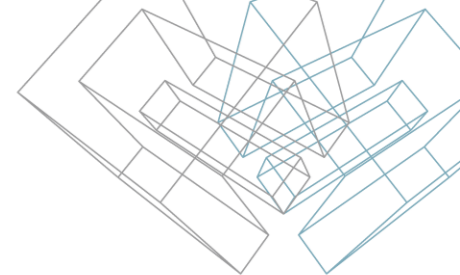
Creating New Types

- Click the button *Create new type*.
- Select new web/chord types and click the *Create* button.



Truss Type name

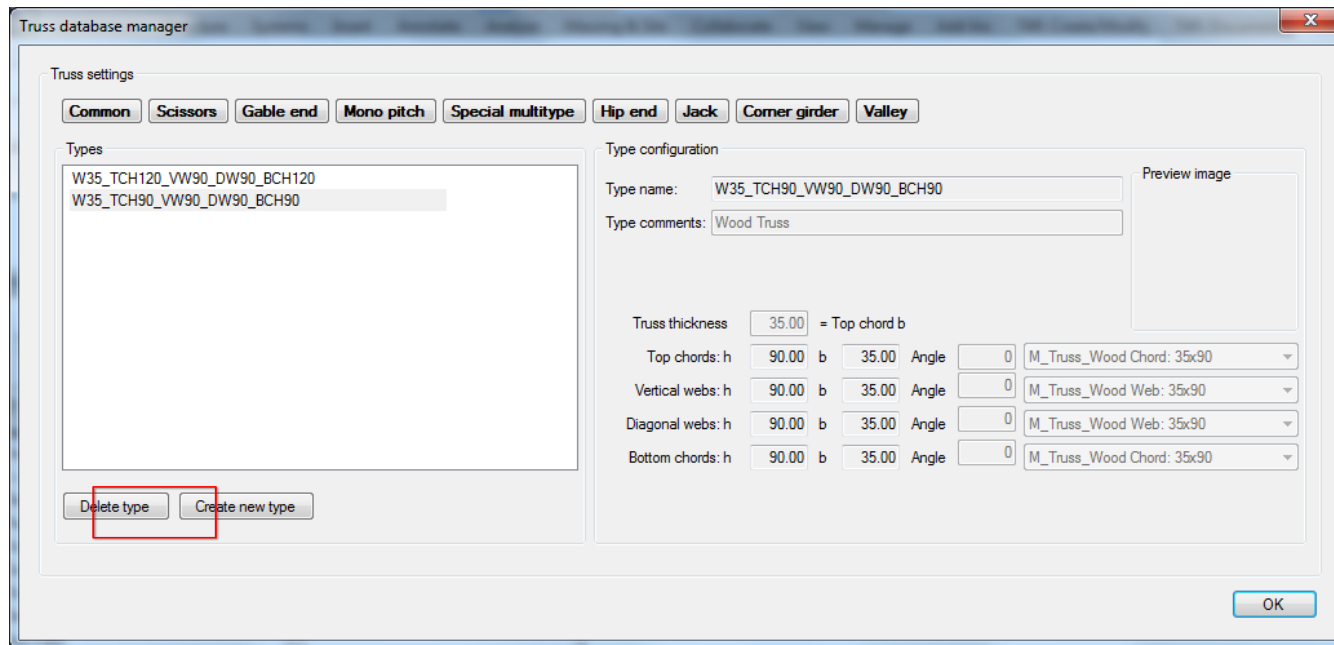
- 'Type name' will represent all parameters that you set for your new truss type.



				W35_TCH90_VW90_DW90_BCH90				
Truss thickness	<input type="text" value="35.00"/>	= Top chord b						
Top chords: h	<input type="text" value="90.00"/>	b	<input type="text" value="35.00"/>					
Vertical webs: h	<input type="text" value="90.00"/>	b	<input type="text" value="35.00"/>					
Diagonal webs: h	<input type="text" value="90.00"/>	b	<input type="text" value="35.00"/>					
Bottom chords: h	<input type="text" value="90.00"/>	b	<input type="text" value="35.00"/>					

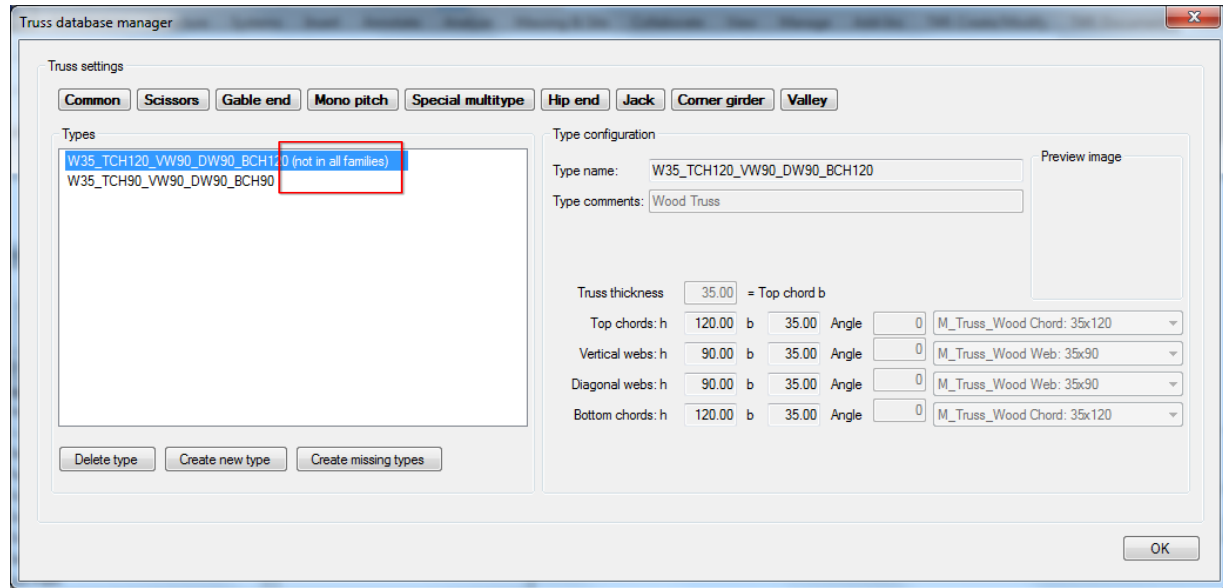
Deleting Types

- If you want to delete a truss type, that doesn't meet your regional defaults, click the *Delete type* button.



Notes

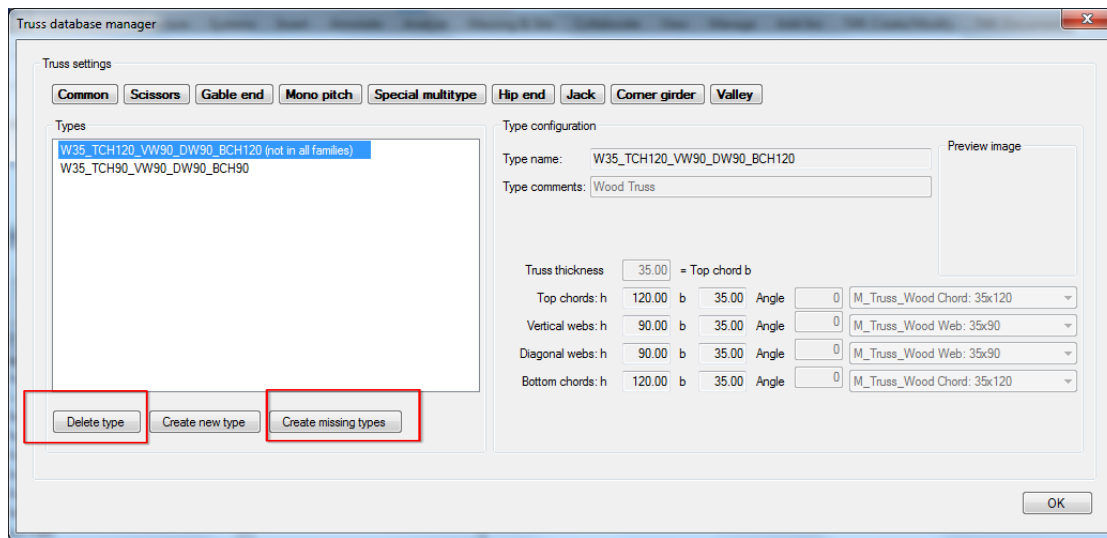
- Make sure that all truss categories (classes) have the same types.
- If at least one of the truss categories has less types, name of this type will contain the note “not in all families”.

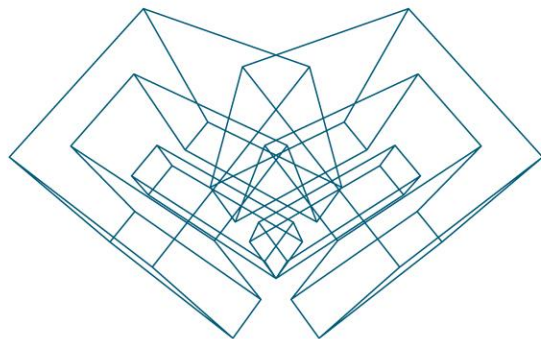


Notes

Three options to avoid this:

- Delete that type of truss one by one from all categories using the command *Delete type*;
- Delete that type of truss from all categories with one click. Use the command *Delete type*;
- Create that type of truss in all categories using the command *Create missing types*.





AGA CAD Ltd

T: +370 618 55671 | E: support@aga-cad.com | W: www.aga-cad.com