

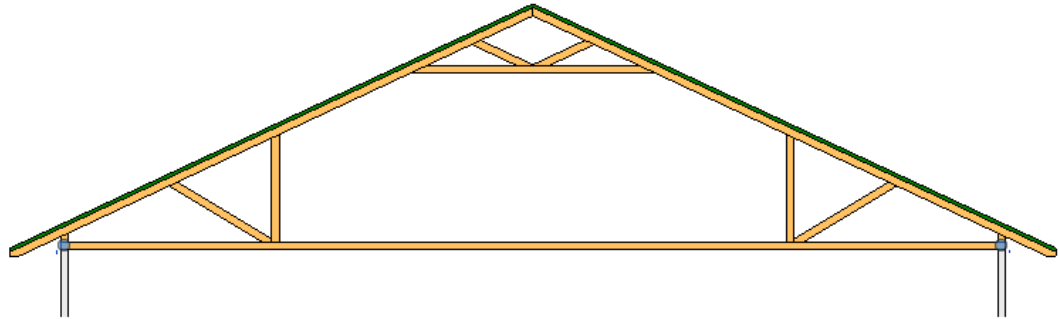
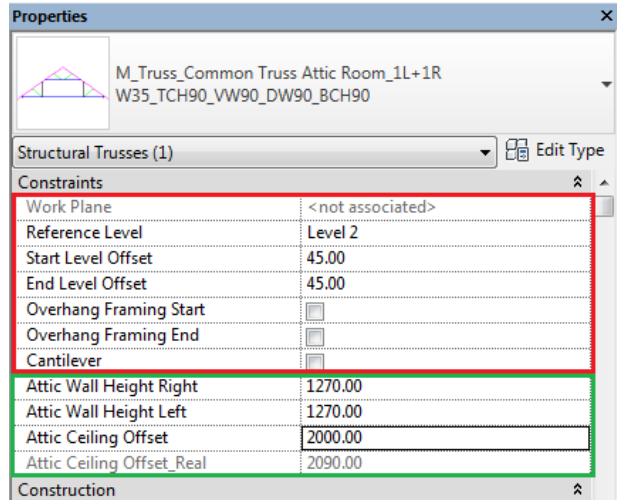


# TRUSS+

## Modify Truss Inserted by Model Line

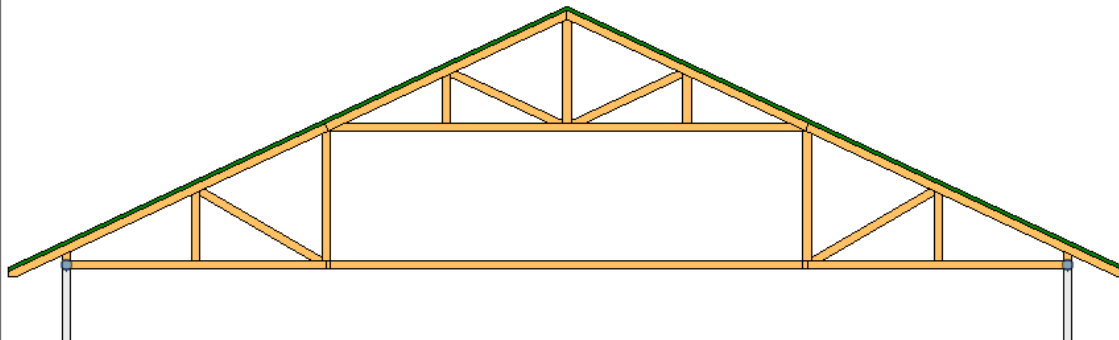
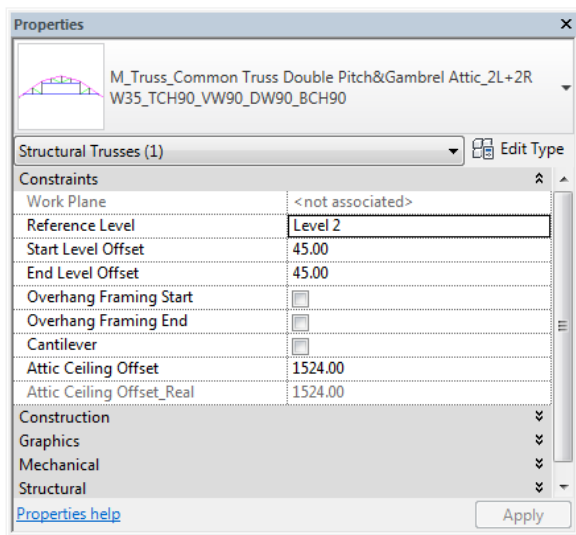
# Modify Truss Inserted by Model Line

- Select a truss to modify parameters (attic truss in this case).
- All changeable (main) parameters are under Constraints group.
- Software controls many parameters automatically (red mark), but some trusses of special type have own special parameters (green mark) which must be configured by User.



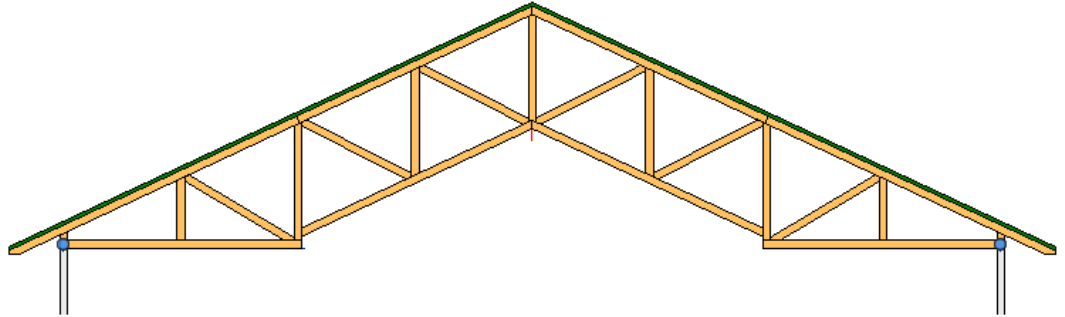
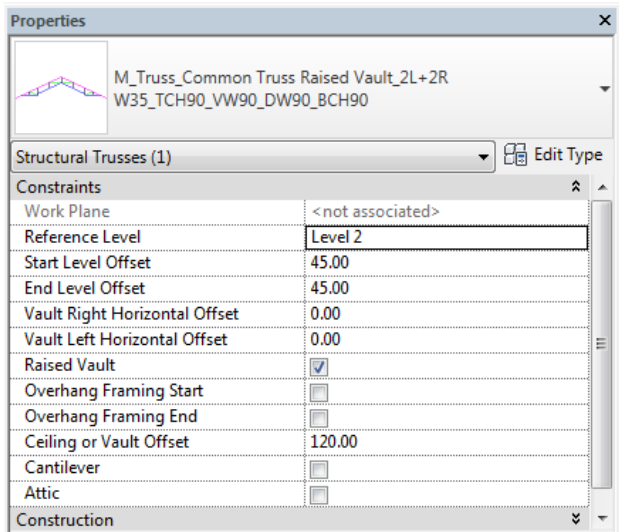
# Modify Truss Inserted by Model Line

- An example of Double Pitch & Gambrel attic truss.



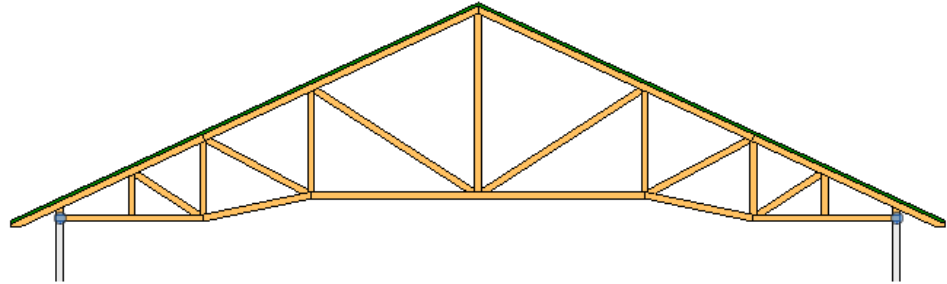
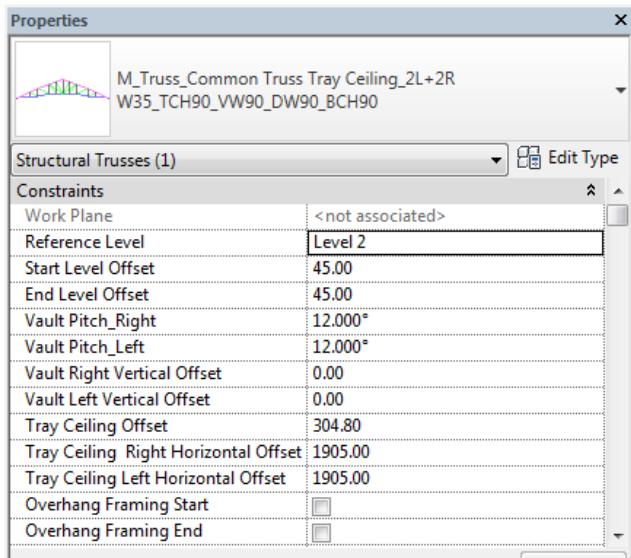
# Modify Truss Inserted by Model Line

- An example of Raised vault truss.



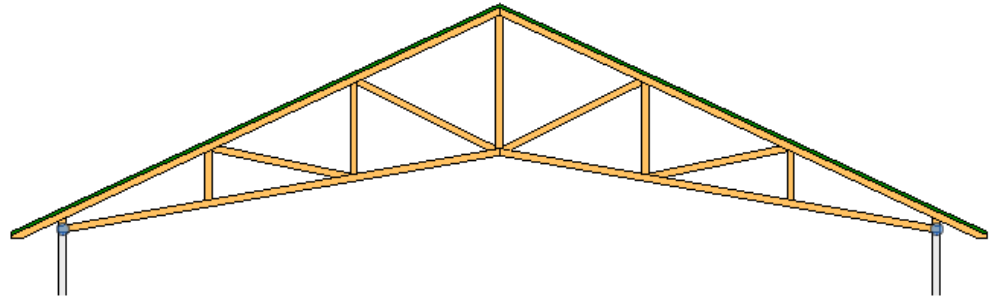
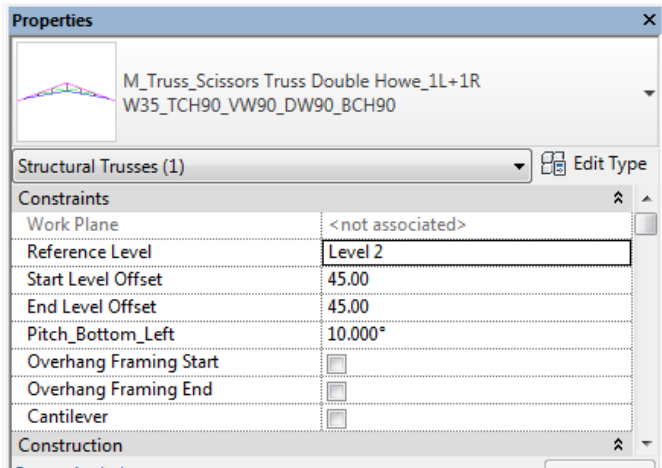
# Modify Truss Inserted by Model Line

- An example of Tray ceiling truss.



# Modify Truss Inserted by Model Line

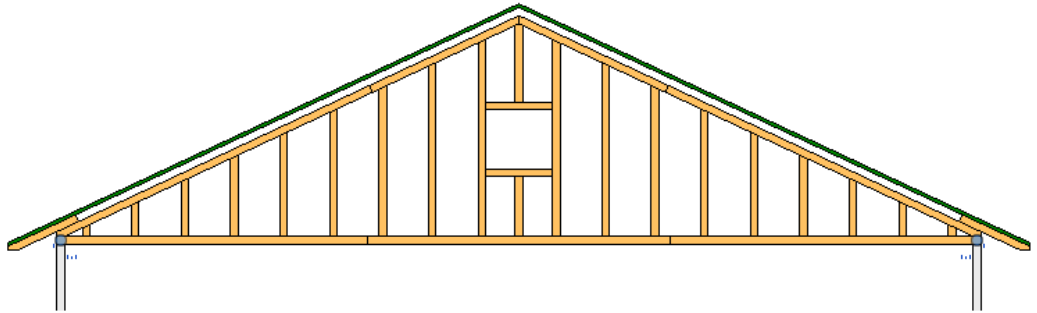
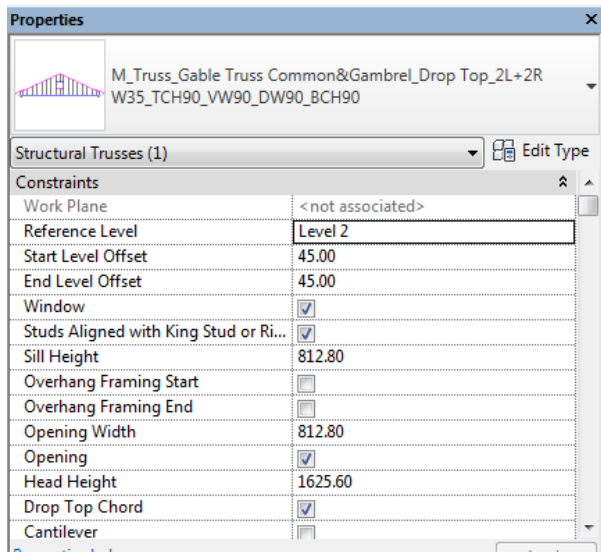
- Scissors truss example.





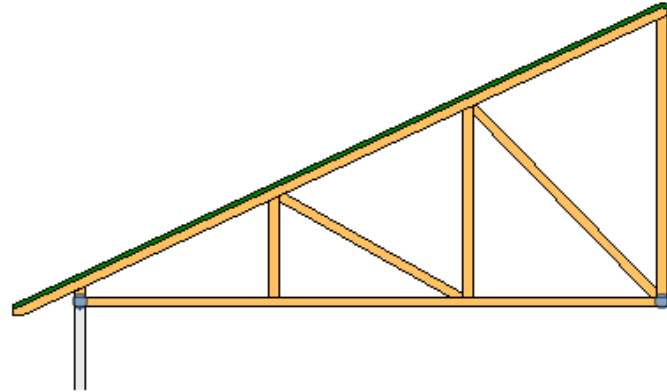
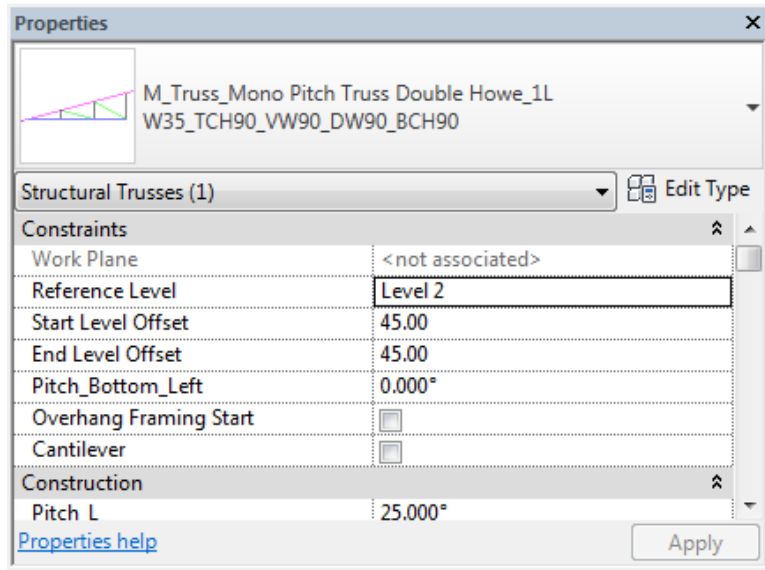
# Modify Truss Inserted by Model Line

- Gable truss example.

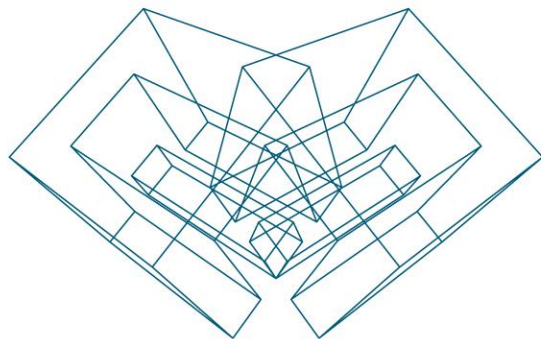


# Modify Truss Inserted by Model Line

- Mono pitch truss example.







AGA CAD Ltd

T: +370 618 55671 | E: [support@aga-cad.com](mailto:support@aga-cad.com) | W: [www.aga-cad.com](http://www.aga-cad.com)