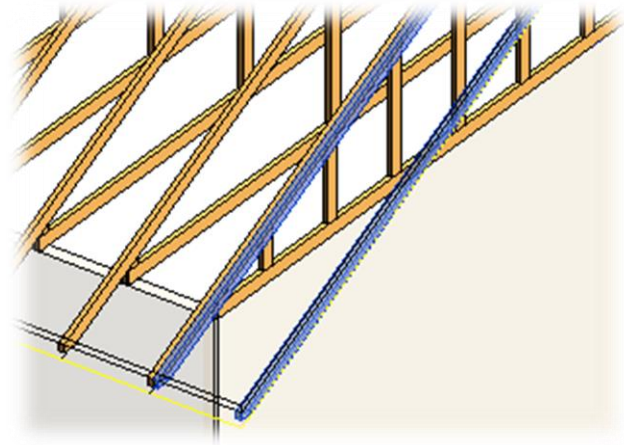
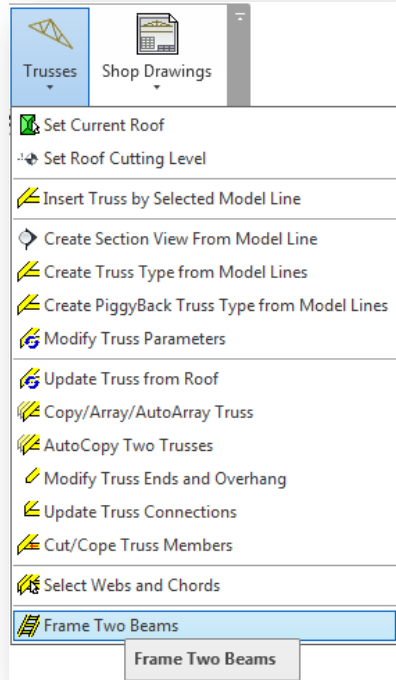


The image shows a large, empty parking garage with a blue floor and concrete pillars. A complex 3D model of a truss structure is overlaid on the scene. The model consists of a white wireframe and a solid blue translucent version of the same structure. The wireframe is composed of interconnected lines forming a series of triangles and rectangles. The solid blue version is a more complex, multi-faceted structure that appears to be a physical representation of the truss. The background shows the perspective of the parking garage with its concrete beams and pillars, and some distant lights.

TRUSS+ Frame Two Beams

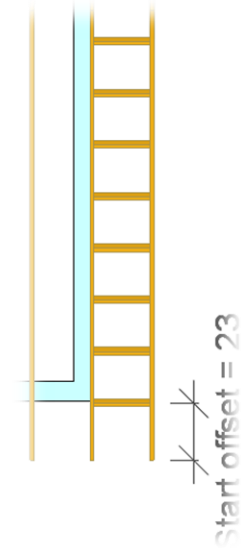
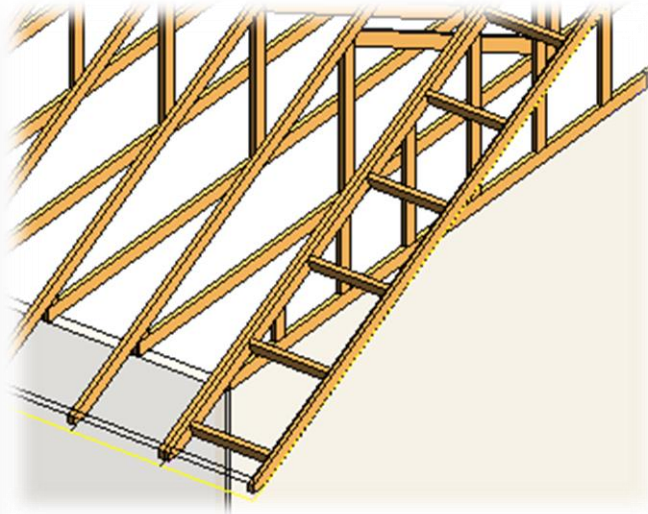
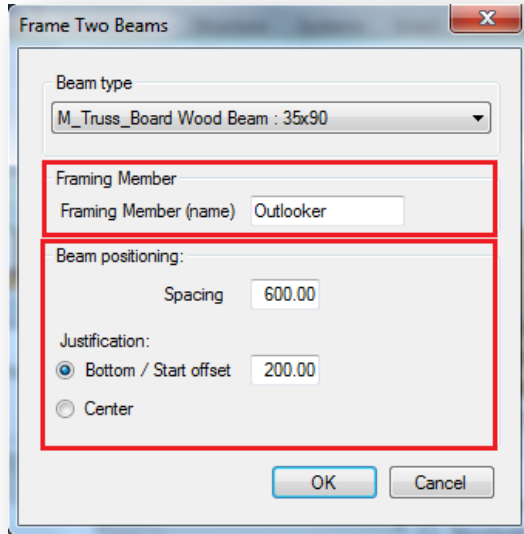
Frame Two Beams

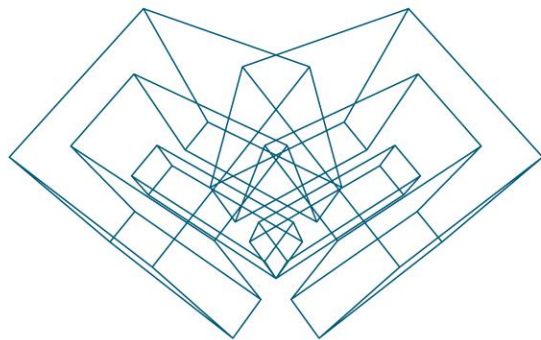
- Select two parallel Structural Framing elements.
- Select *Frame Two Beams* from Truss+ menu.



Frame Two Beams

- Select a beam type, write Framing Member name.
- Enter **Spacing** - a distance between beams.
- Enter **Bottom/Start offset** distance and click *OK*.





AGA CAD Ltd

T: +370 618 55671 | E: support@aga-cad.com | W: www.aga-cad.com