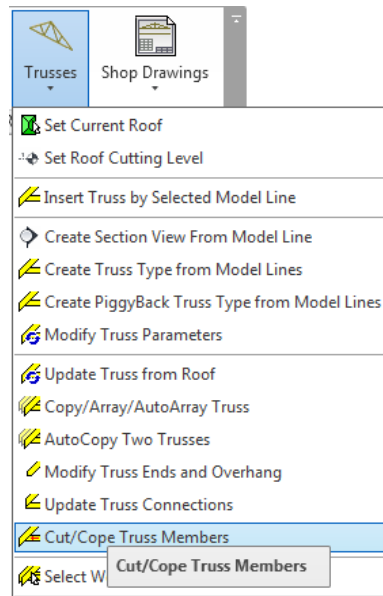


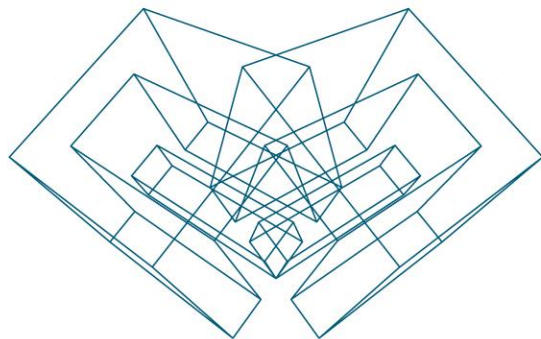


TRUSS+ Cut/Cope Truss Members

Sort/Cope Truss Members

- Select one or more trusses to cope/cut truss members.
- Choose *Cut/Cope Truss Members* directly from “Truss+” menu.
- Truss members will be cut according to predefined rule in the ‘Truss Design Settings’ dialog window.





AGA CAD Ltd

T: +370 618 55671 | E: support@aga-cad.com | W: www.aga-cad.com