



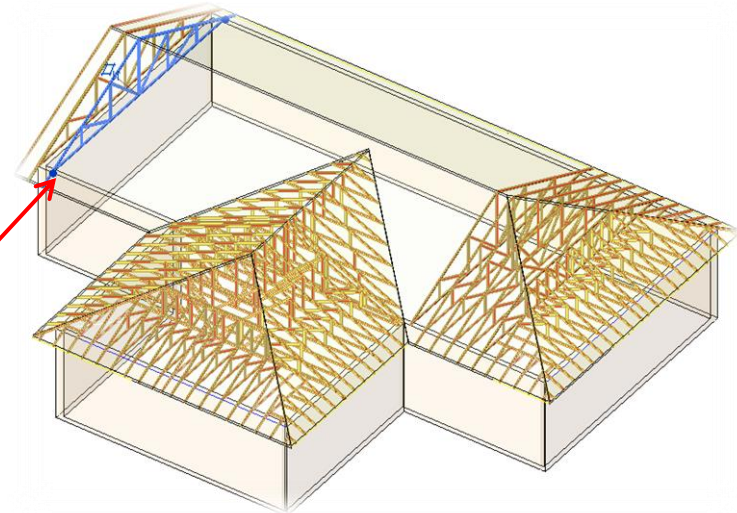
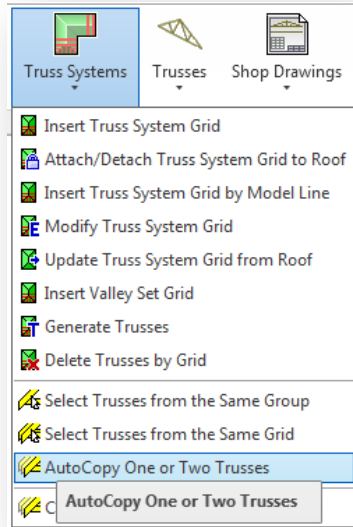
TRUSS+

AutoCopy One or Two Trusses

AutoCopy One or Two Trusses

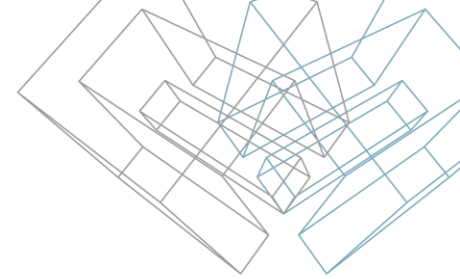
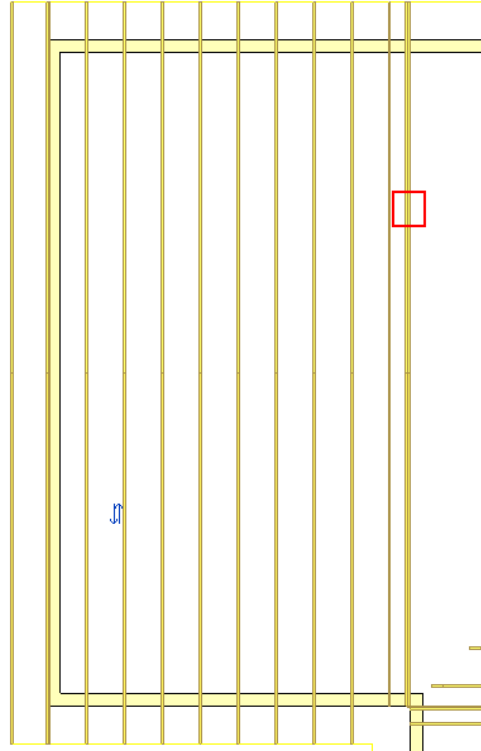
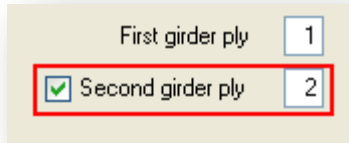
One truss can be auto copied only when Roof and Truss System Grid exists. The *AutoCopy One Truss* function works for common trusses only.

- Select **one** truss you want to copy.
- Choose *AutoCopy One or Two Trusses* from “Truss+” menu.



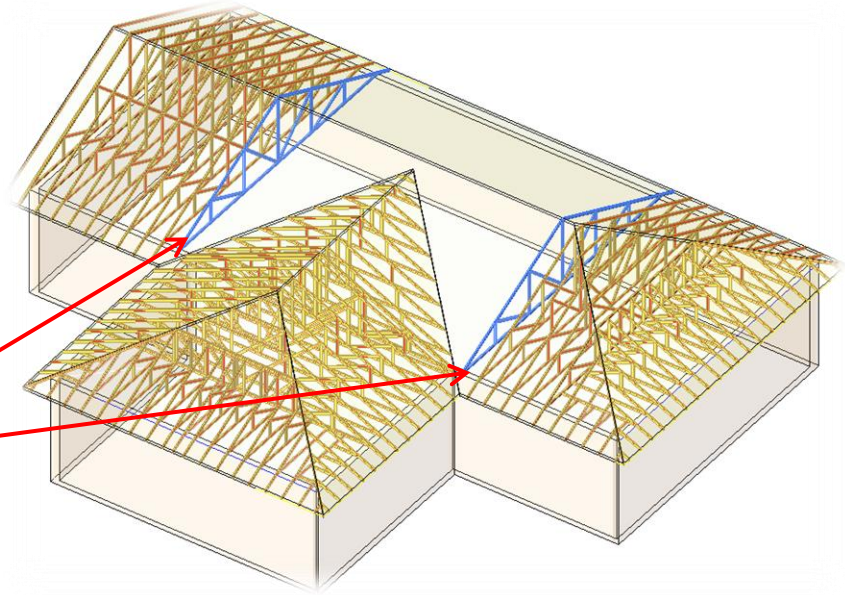
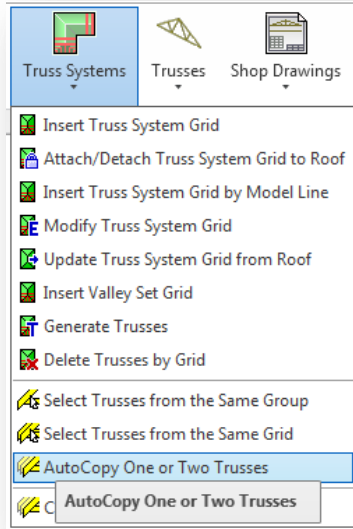
AutoCopy One or Two Trusses

- Truss is copied as it is defined in the truss system grid configuration.



AutoCopy One or Two Trusses

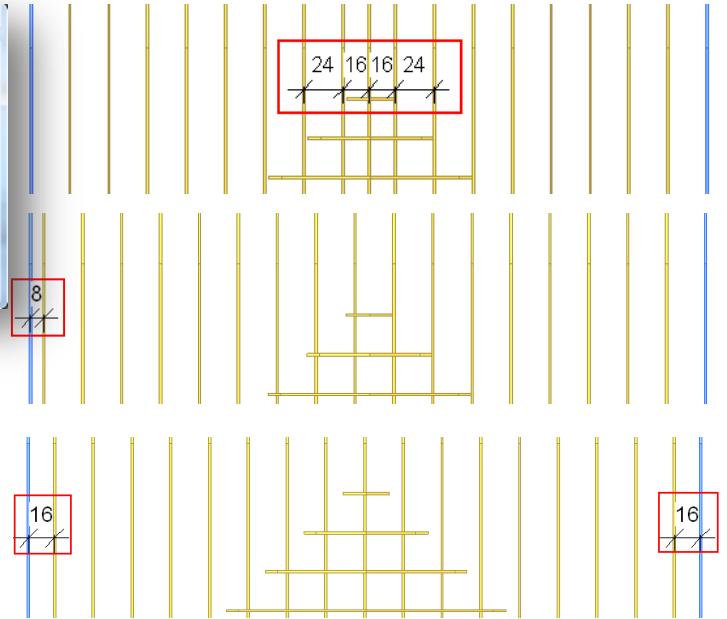
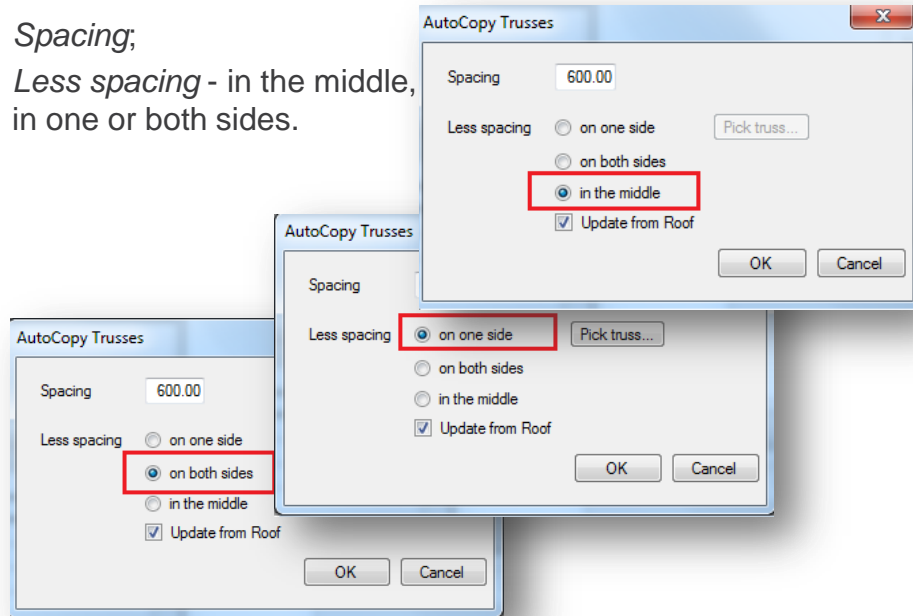
- Select **two** trusses and choose *AutoCopy One or Two Trusses* from “Truss+” menu.



AutoCopy One or Two Trusses

In the coming dialog the user has to define AutoCopy parameters:

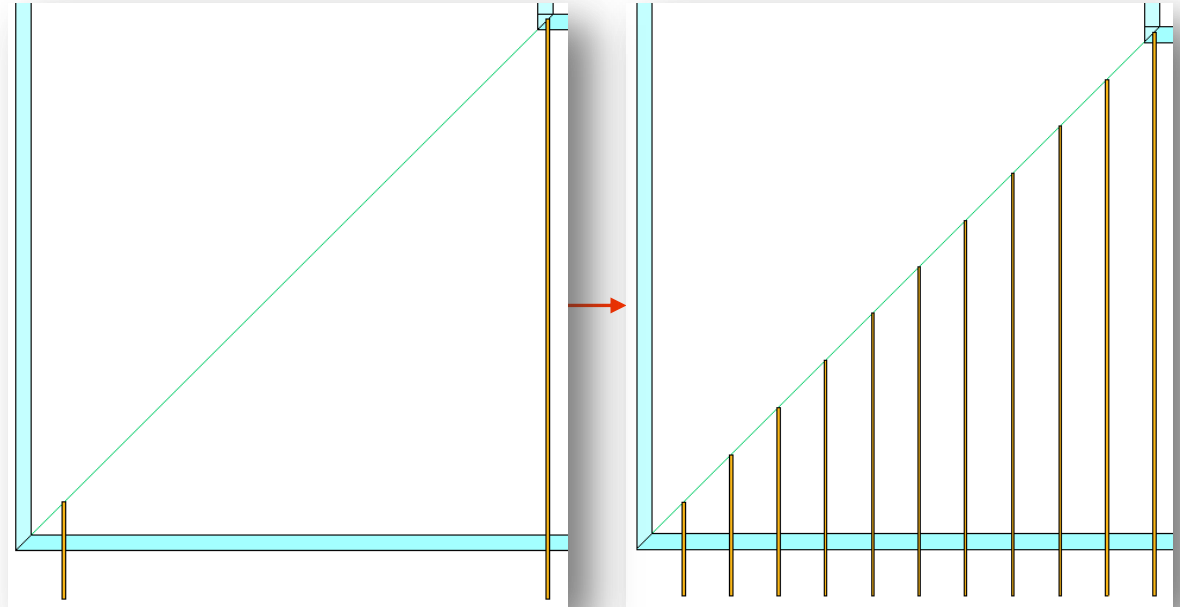
- *Spacing*;
- *Less spacing* - in the middle, in one or both sides.

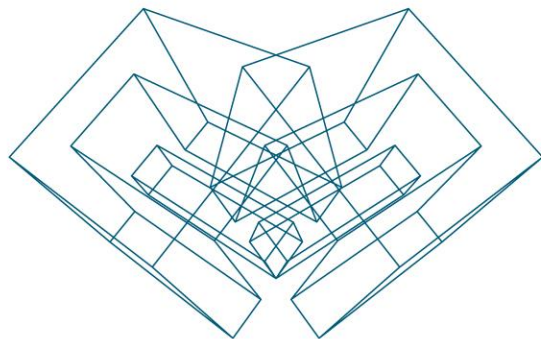


AutoCopy One or Two Trusses

AutoCopy Two Trusses function can be used also when Truss system grid does not exist.

- Select **two** trusses and choose *AutoCopy One or Two Trusses* from “Truss+” menu.
- Define AutoCopy parameters.





AGA CAD Ltd

T: +370 618 55671 | E: support@aga-cad.com | W: www.aga-cad.com