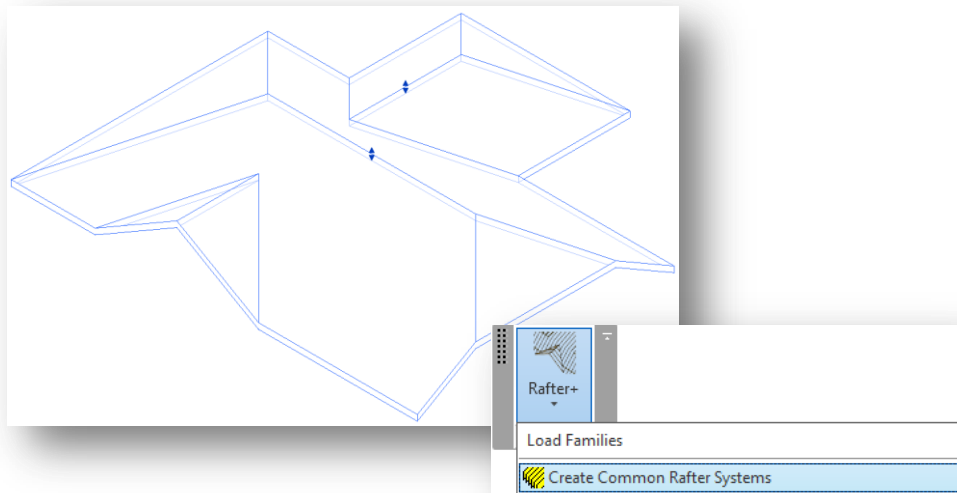
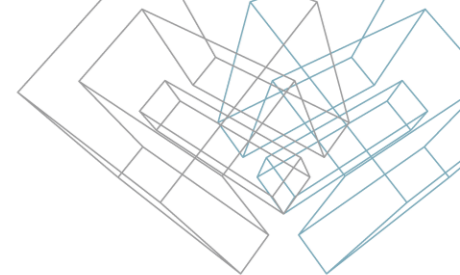


The background is a photograph of a large, empty parking garage with concrete pillars and beams. The scene is dimly lit with some overhead lights. Overlaid on the right side of the image is a complex 3D geometric structure. It consists of several interconnected wireframe boxes and solid, semi-transparent blue blocks. The wireframe boxes are white lines, while the solid blocks are a vibrant blue. The overall aesthetic is modern and architectural.

WOOD FRAMING RAFTER+

Create Common Rafter Systems

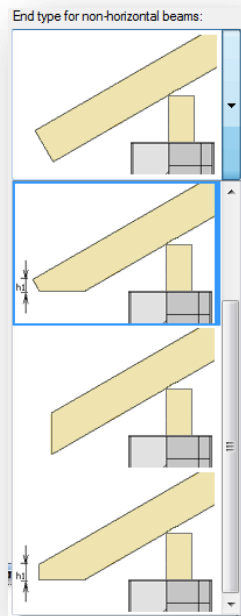
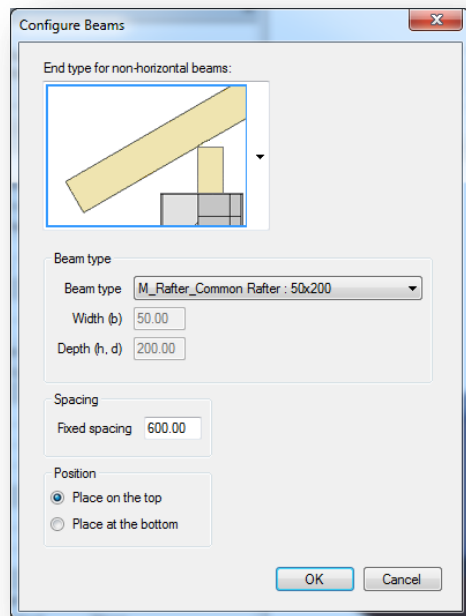
Create Common Rafter Systems



- Select roof;
- Select the *Create Common Rafter Systems* function from “Rafter+” menu.

NOTE: Load Families to your project before starting *Create Common Rafter System* command.

Configure Beams



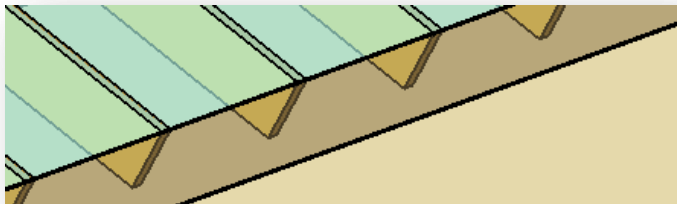
- Now you can choose End cut type of the rafter;
- Enter the End *cut height* dimension **h1** if required;
- Select framing family available in the project for Rafter beam;
- Enter the distance of Fixed Rafter spacing;
- Select position of Rafter beam.

NOTE:

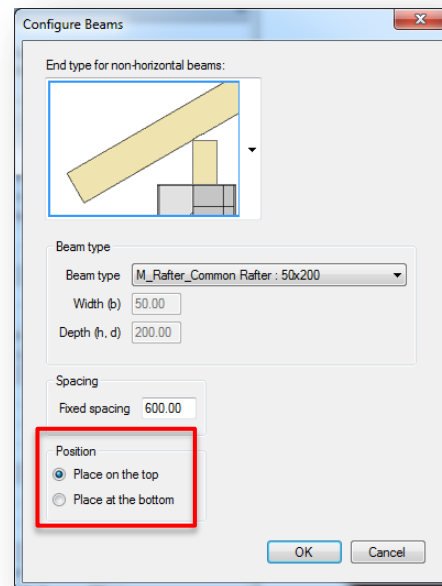
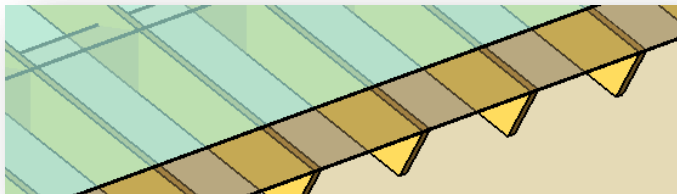
You can change all these parameters at any time.

Configure Beams

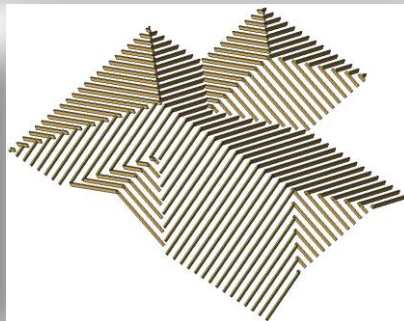
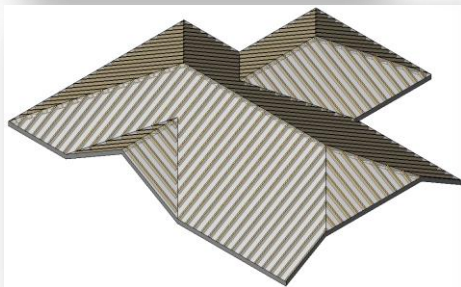
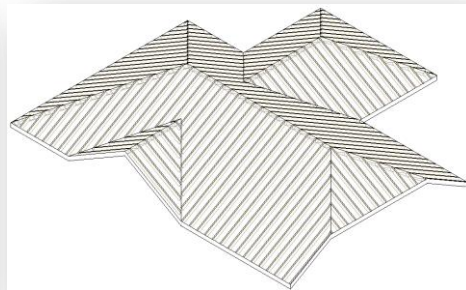
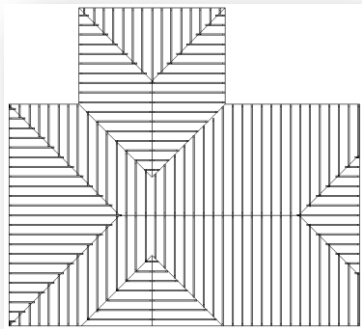
- Placed on the top



- Placed at the bottom

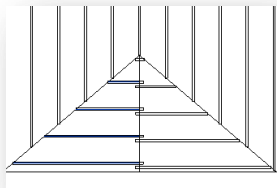


Change View Settings

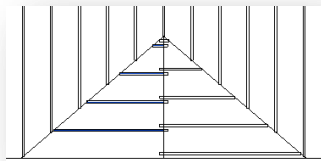


- Choose Detail Level and Model graphics style which best fits your requirements.
- You can make a roof material transparent for the best view and easier work with roof and rafters.
- Now it is the best time to edit distribution of rafters in all slopes.

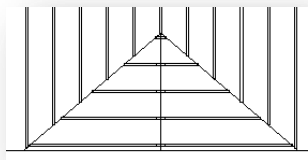
Edit Distribution of Rafters



Beginning

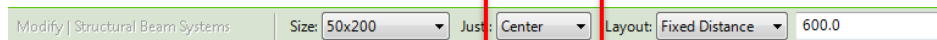


End

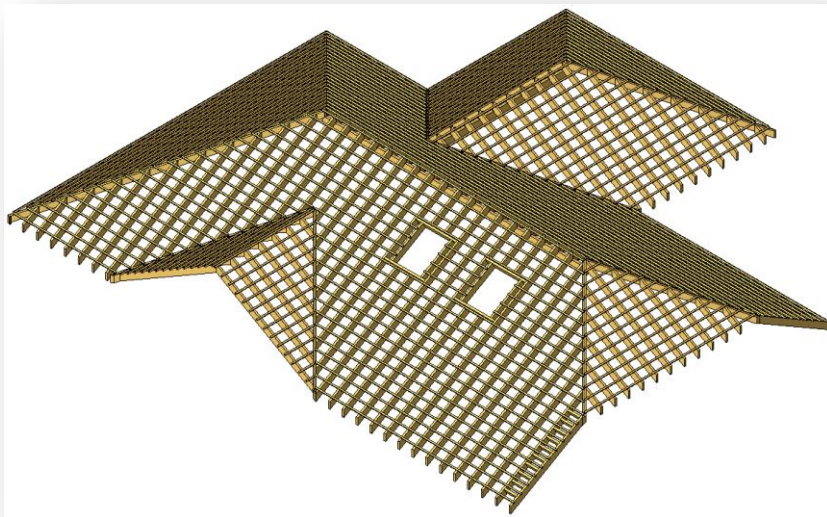
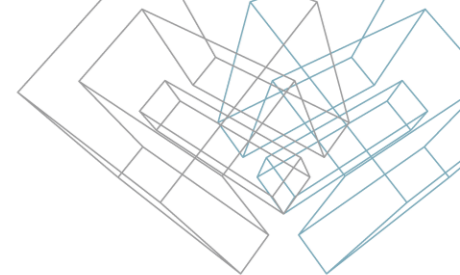


Center

- Select Rafter systems
- Select Justification option
 - Beginning
 - End
 - Center (default)
 - Direction line



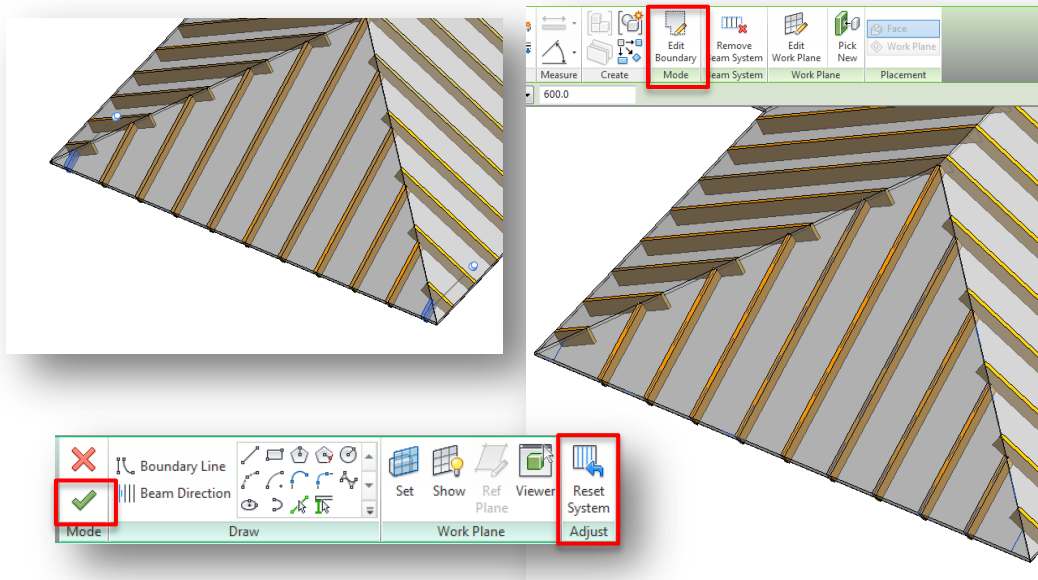
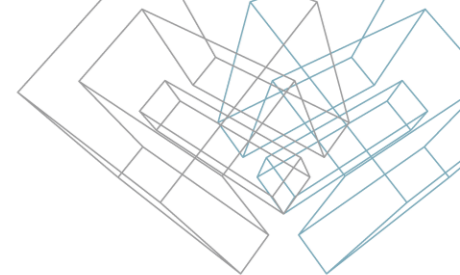
Edit Distribution of Rafters



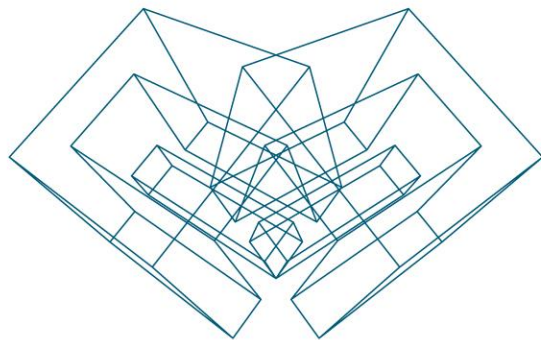
- You can define a precise distance between rafters and the slope side using the *Split Beam System* function of Rafter+.
- To avoid mistakes and improve performance, it is recommended to use this function only after the framing of the roof is finished.

For more information please see the document about the *Split Beam System* function.

Edit Rafter Systems



- Select a rafter you want to delete, unpin it and press the *Delete* button.
- You can easily recover deleted elements of rafter systems:
 - Select Rafter systems;
 - In the ribbon, click the *Edit Boundary* tool;
 - Click *Reset System* and then *Finish Beam System*.



AGA CAD Ltd

T: +370 618 55671 | E: support@aga-cad.com | W: www.aga-cad.com