

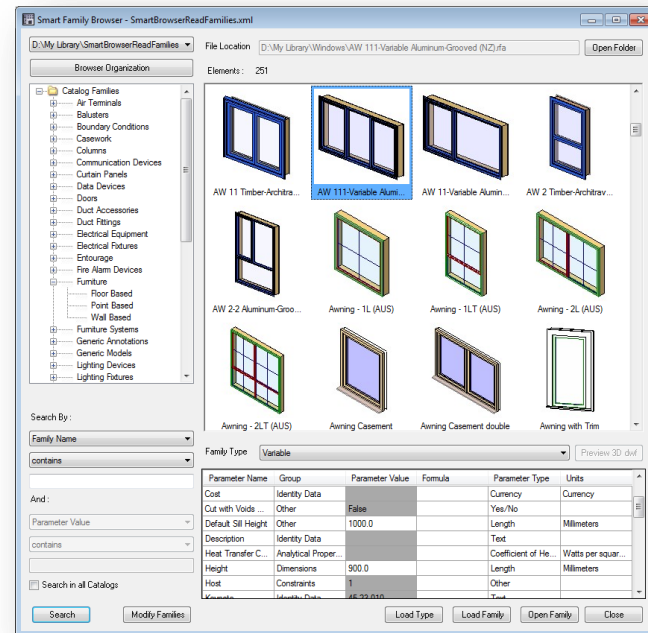
An abstract graphic composed of several overlapping, tilted rectangular frames. Some frames are solid blue, while others are white wireframes. They are arranged in a dynamic, non-orthogonal composition, creating a sense of depth and architectural structure. The background is a dark, empty parking garage with concrete pillars and a blue-tinted floor.

SMART BROWSER MANAGE

Working with Families from the Library

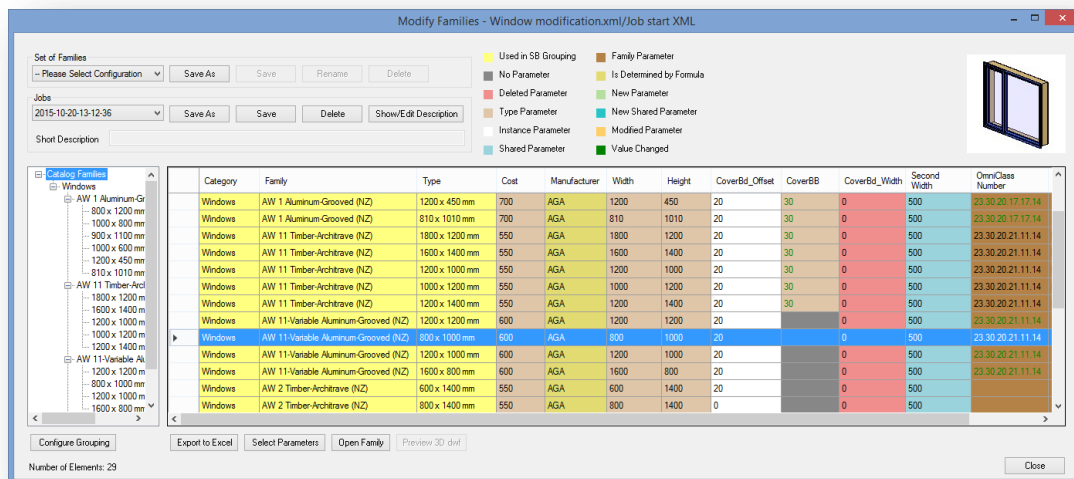
Smart Browser Manage is an independent family content browser and manager that allows you to:

- Easily and quickly search, modify, and place families into the project.
- Group families by original folder, category, host, version, or unit system (families are listed in a tree structure).
- Overview family types and parameters containing values.
- Modify hundreds of selected families: add new parameters (including shared), copy parameters from one family to another, rename parameters, delete parameters, change values, add new types, delete types, rename types, and much more.
- Find differences between project families and families in the library.
- See all family 2D and 3D views (using DWFX) before inserting into the project.



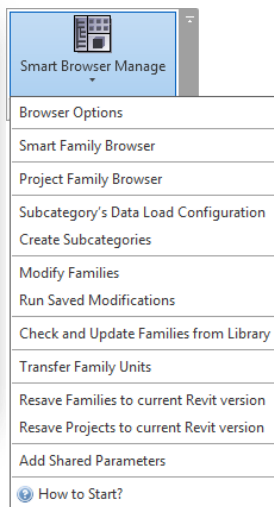
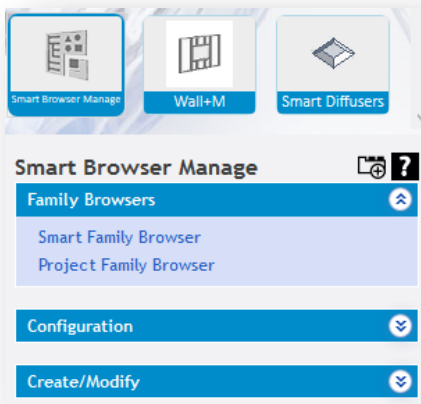
Smart Browser Manage

Smart Browser Manage adds or changes BIM object parameters and values based on rules, eliminating the error-prone manual task of updating Revit® families. Adapt in real time to new LOD specifications, object standards, and record-model needs, keeping project and library families in sync across your whole BIM team.



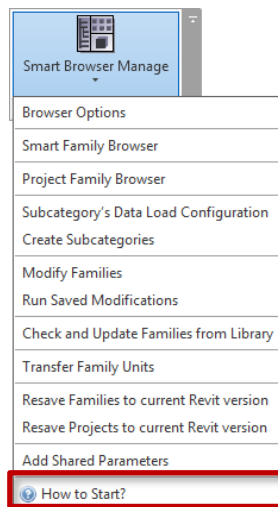
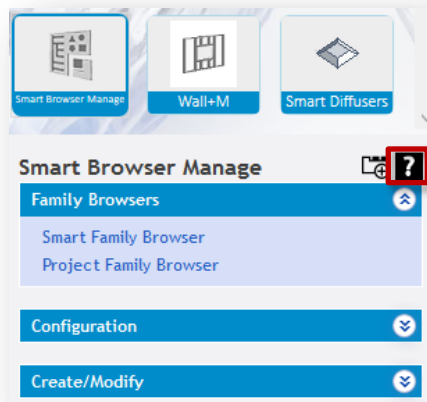
Smart Browser Manage

Smart Browser Manage functions can be accessed through the **TOOLS 4 BIM Dock** or ribbon menu.



Smart Browser Manage

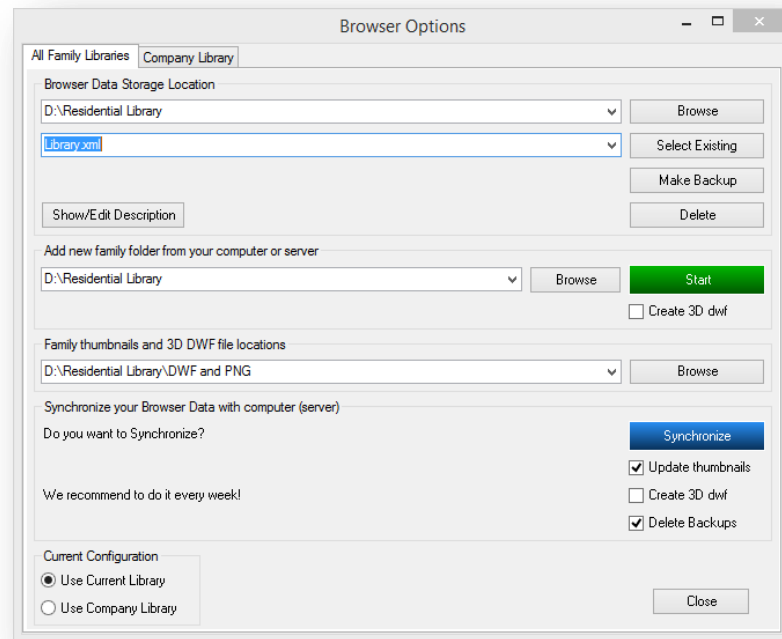
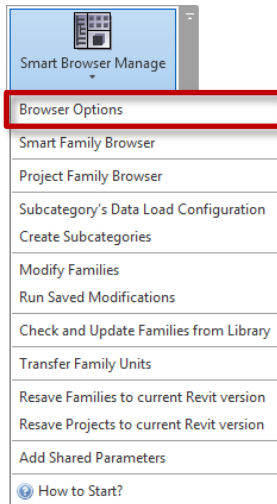
Smart Browser Manage has an E-Help button where users can find videos, webinar recordings, and detailed technical documentation.



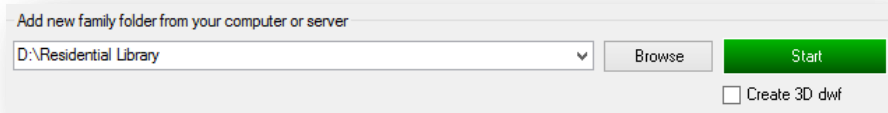
Browser Options

Browser Options

Before working with the **Smart Family Browser**, you need configure the software by accessing the **Browser Options**.



Browser Options



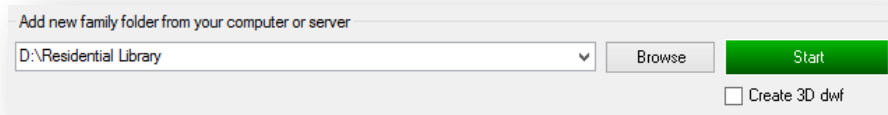
Add new family folder from your computer or server – Locates the folder containing your Revit library files.

Start – Creates an XML file, which uploads families from the computer or server to the browser. During the new XML file creation, the extension opens every family from the library, reads all its information (types, parameter names, parameter values, category, host type, etc.) and creates a picture (PNG) and 3D (DWFX) files (if selected in configuration).

Creating the XML file can take a considerable amount time (½ hour to 24 or even 36 hours), depending on the size of the library.

It is recommended that a fast computer be used to create the initial XML file. You can batch process folders by selecting individual folders or sub-folders and then adding more folders at a later time.

Browser Options



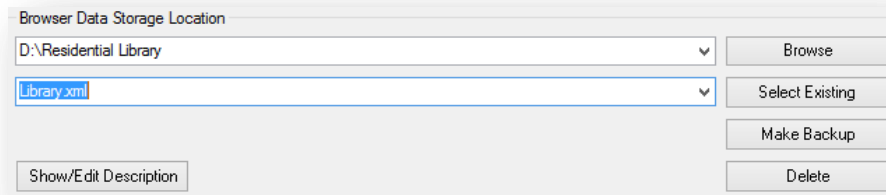
Older file formats – Because the XML file generation opens every file, this will cause Revit to convert old families to the current version of Revit as the family is opened. This does take time. The XML creation process does not save the families, so they will remain in the older format.

Prior to creating the XML database, it is recommended to use the Revit update utility to batch process the updating of all families to the current release.

Create 3D dwf – Select if DWF files are necessary in the browser for 3D viewing.

Please note that this can significantly increase the time it takes to create the database.

Browser Options



One XML file can have several locations to different libraries.

Browser Data Storage Location – Browse the folder where the XML file with the library database is to be placed. This can be placed onto a network server for access by multiple users. Please use UNC pathing to point to the server and folder (i.e. //server1/revit/library). Make sure that the UNC path can be resolved via IP ping. This may require modification of HOSTS file.

Select Existing – Select an existing XML file if one was created with a previous Smart Browser version.

Make Backup – Makes backup file of current XML file.

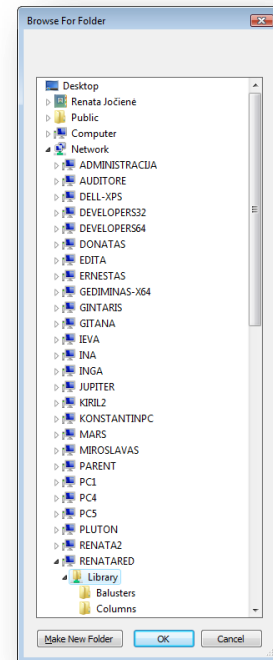
Delete – Deletes current XML file.

Browser Options

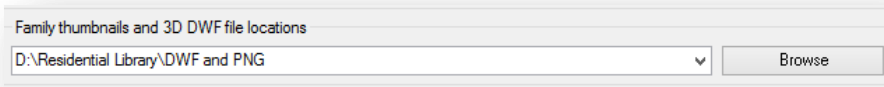
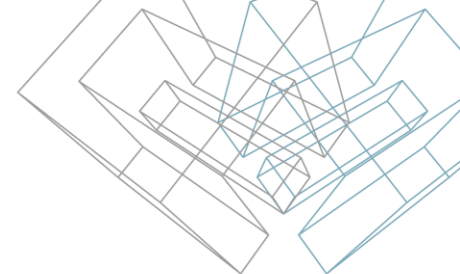
If your library is used by your whole company and is located on a server, you don't need to create an XML file for each computer.

You have to make the first XML file with a full path to your library though the network. Please use UNC pathing to point to the server and folder (i.e. `//server1/revit/library`).

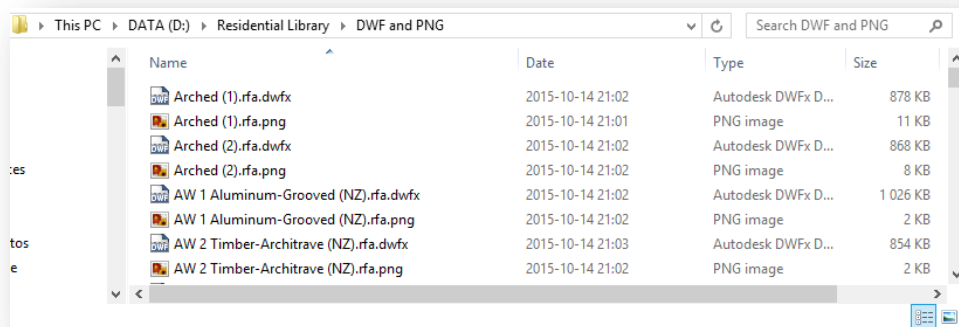
Next, it is required to change the path on every computer to point to the XML file on the network.



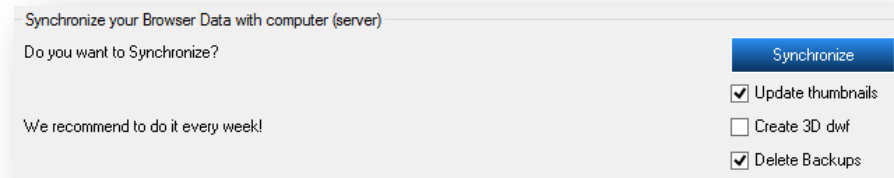
Browser Options



Family thumbnails and 3D DWF file locations – Select the folder where the PNG and DWF files are to be placed. This can be located on a network server for access by multiple users.



Browser Options

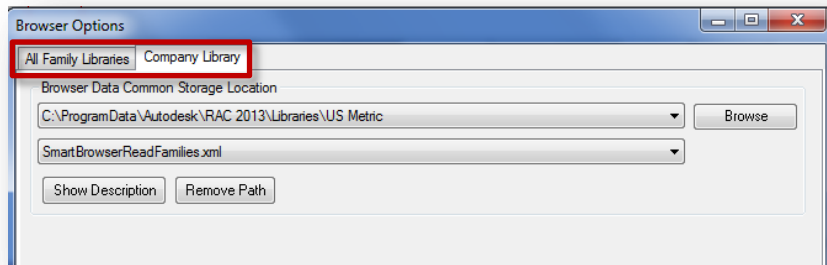
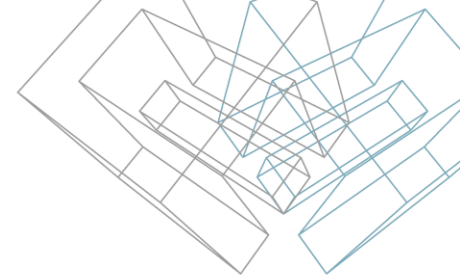


Synchronize – Updates the library if there are any changes to the families. Running this will cause all indexed Revit family files to be checked and re-indexed into the database in the event that they have been modified since the last synchronization.

Create 3D dwf – Makes DWF files for 3D viewing if those have not been created yet.

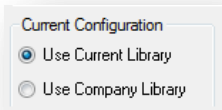
Delete Backups – Deletes backup files during synchronization process.

Browser Options



All Family Libraries – In this tab, you can create/delete/update XML files with library databases.

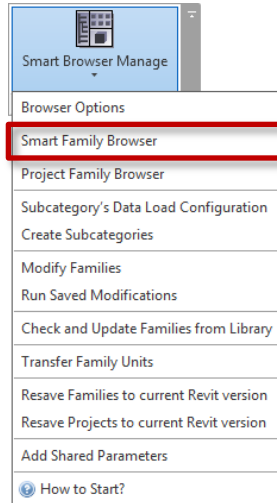
Company Library – In this tab, you can select which XML file is your company XML file with library database. Then you can decide which library to use in Smart Family Browser – current library or company library.



Smart Family Browser

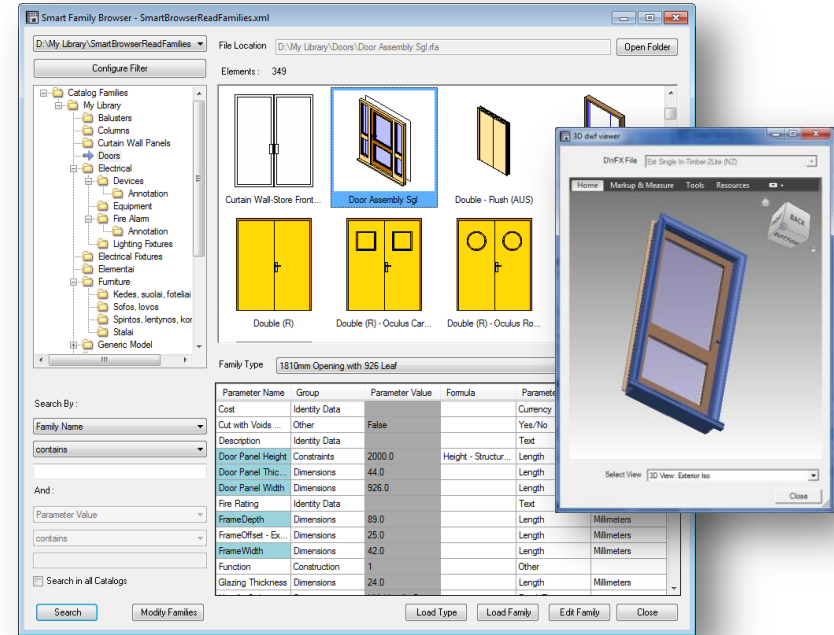
Smart Family Browser

Smart Family Browser – opens the browser with predefined families from the library.



Smart Family Browser works independently from the Revit® project.

To reduce the time it takes to load **Smart Browser Manage**, please note that it is not necessary to close the Smart Browser dialog when working within your projects.



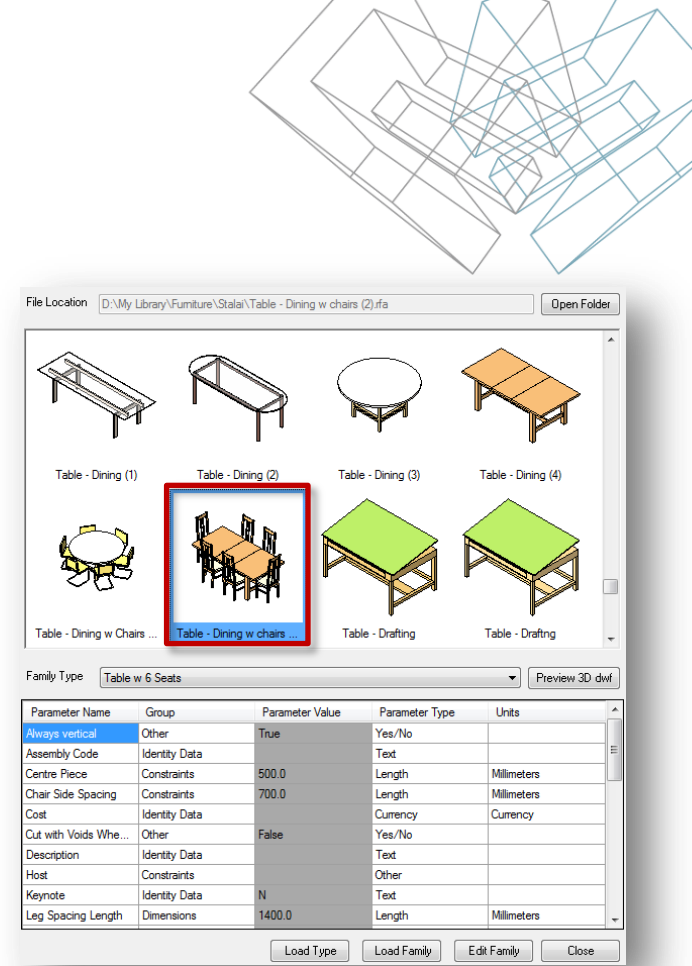
Smart Family Browser

When an element is selected, the browser shows all family types, parameter names, parameter groups, parameters values, and parameter values and units.

File Location – shows location where the selected family is placed.

Open Folder – opens the folder where the selected family is placed.

Edit Family – goes to the selected family editing mode.

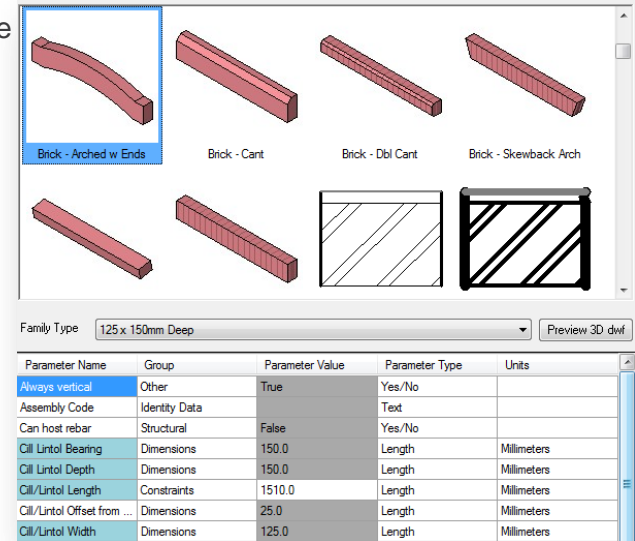


Smart Family Browser

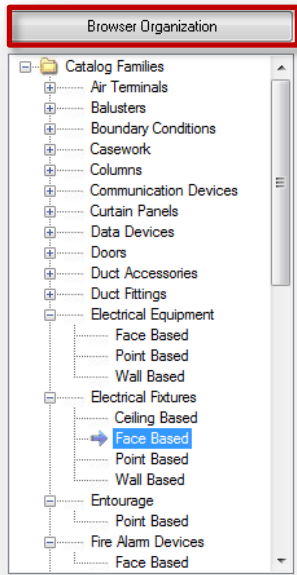
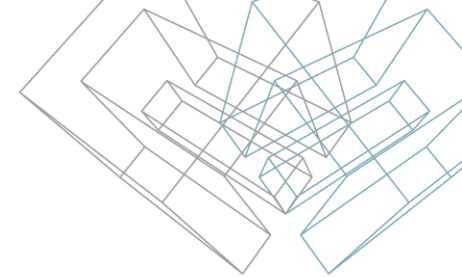
If parameter values are displayed in a gray background, it means that those values are **type values** and will affect all cases of that type in the project.

If parameter values are displayed in a white background, it means that those values are **instance values** and will effect every instance family in the project.

If parameter names are displayed in a blue background, it means that those parameters are **shared** and may be used in schedules and tags if needed.

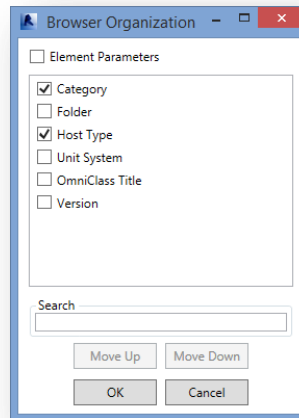


Smart Family Browser



Families are conveniently grouped together in a tree where the user can filter by configurable criteria. Criteria may be selected with the **Browser Organization** button at the top of the tree.

For example, if **Category** and **Host Type** are selected, elements in the tree can be expanded and filtered under these criteria:



Smart Family Browser

Search By – searches for families by family name, family type, parameter name, or parameter value.

Search By – works on the selected group in the family free. If **Search in all Catalogs** is selected, then the search will be made through all families that are in the browser database.

Search By :

Parameter Name

equals

Material

And :

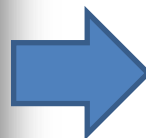
Parameter Value

contains

masonry

☒ Search in all Catalogs

Search



Family Type: Base 650 x 650

Preview 3D dwf

Parameter Name	Group	Parameter Value	Parameter Type	Units
Material	Materials and Finishes	Masonry - Stone Cill	Material	
Model	Identity Data		Text	
OmniClass Number	Identity Data		Text	
OmniClass Title	Identity Data		Text	
Pedestal	Dimensions	30.00	Length	Centimeters
Shared	Other	False	Yes/No	
Show family pre-cut i...	Other	True	Yes/No	
Type Comments	Identity Data		Text	
URL	Identity Data		URL	
Width	Dimensions	65.00	Length	Centimeters

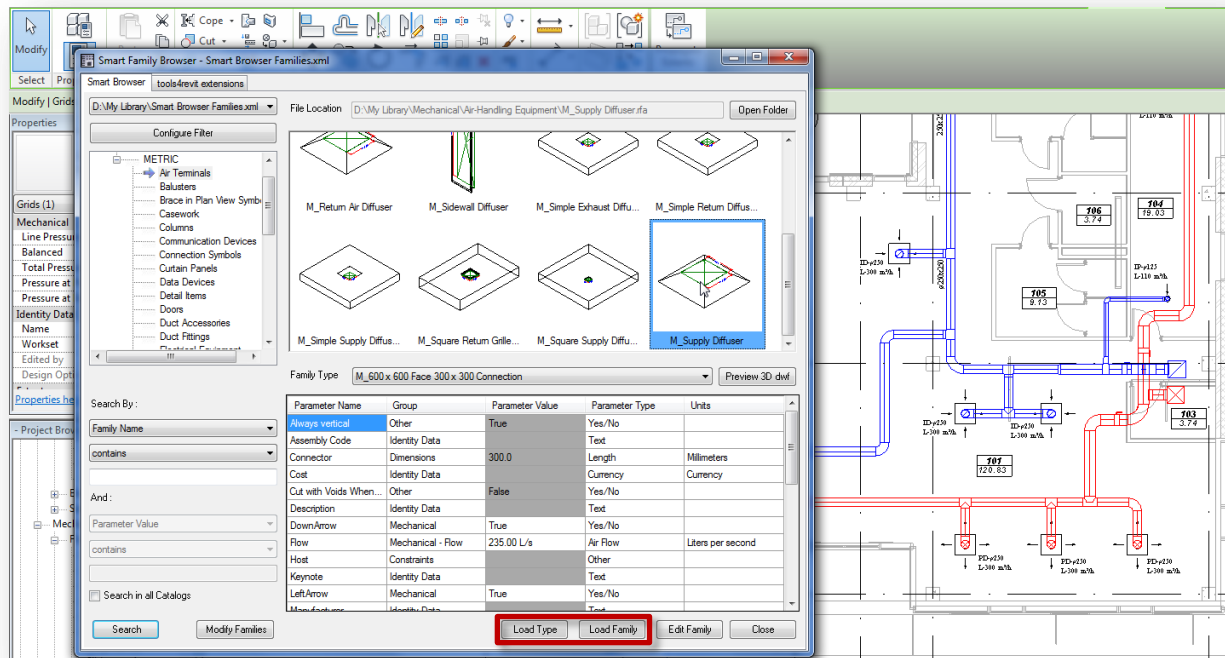
Smart Family Browser

To insert an element into the project, use the drag-and-drop functionality.

The element will be loaded by default with the first type in the list. If you don't want the first type, select the one you want.

Load Type – loads family with the selected type only.

Load Family – loads family with all its types.

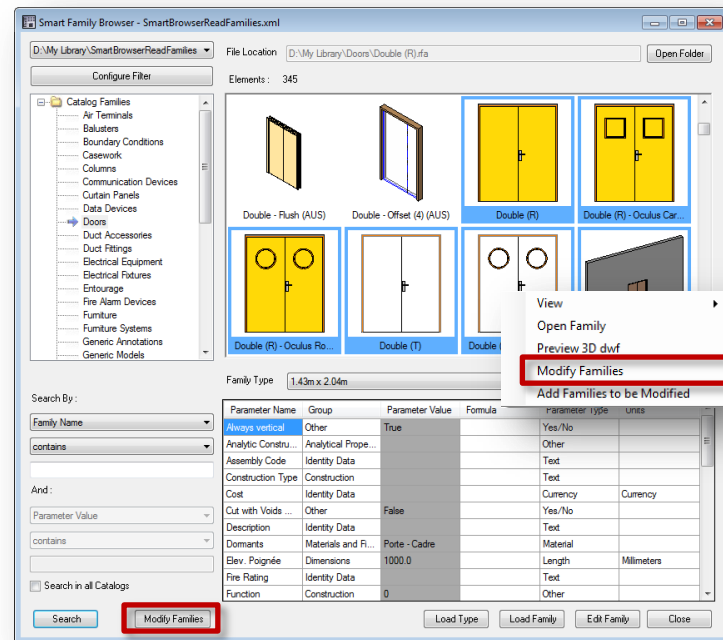


Modify Families

Modify Families

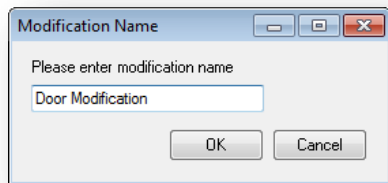
Modify Families - extremely powerful functionality that allows you to change/add/delete parameters or types for selected families.

“Modify Families” can be found by right-clicking the selected family (or families).

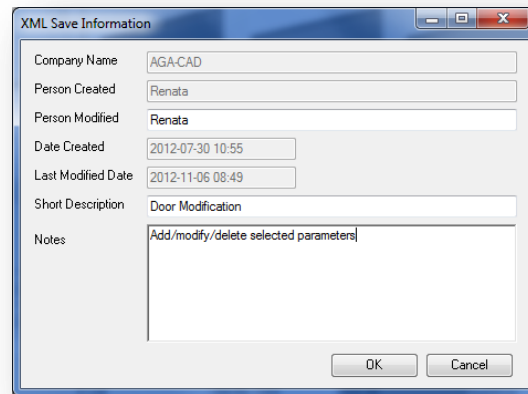


Modify Families

Input the name of the modification. The modification name will identify the group of families with tasks that are assigned to those families:

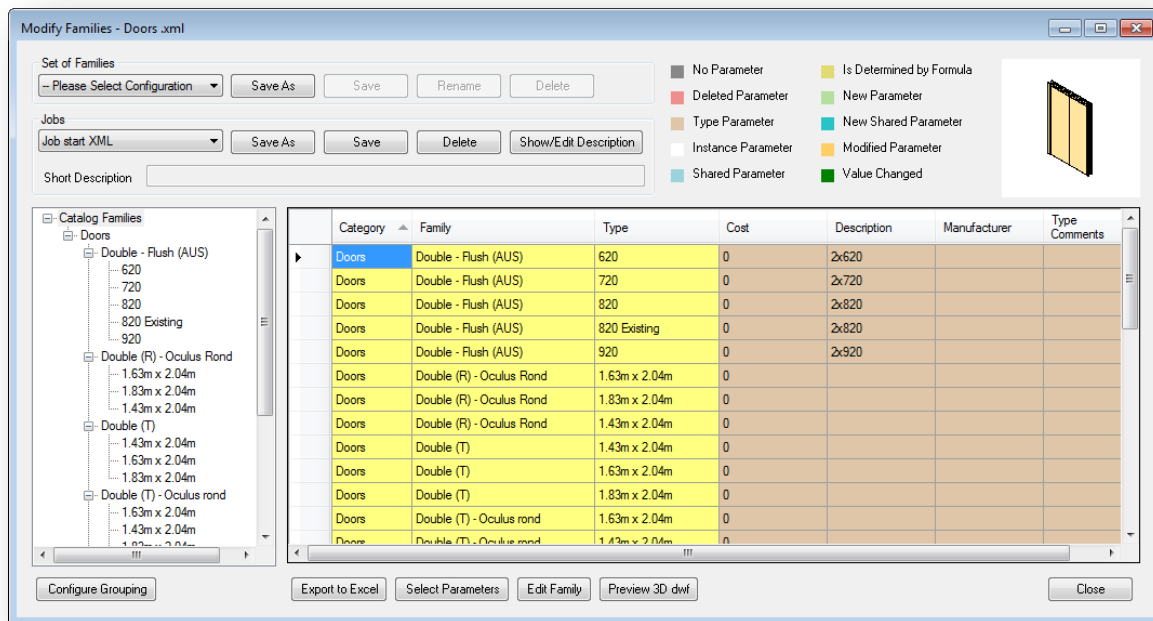


Then, it's necessary to write the name of the person who is modifying the library. A short description and notes may be written with information about the changes that will be made.



Modify Families

Dialog for modification:



Modify Families

Families are conveniently grouped together in a tree, which may be filtered by any parameter. Define grouping parameters with **Configure Grouping**.

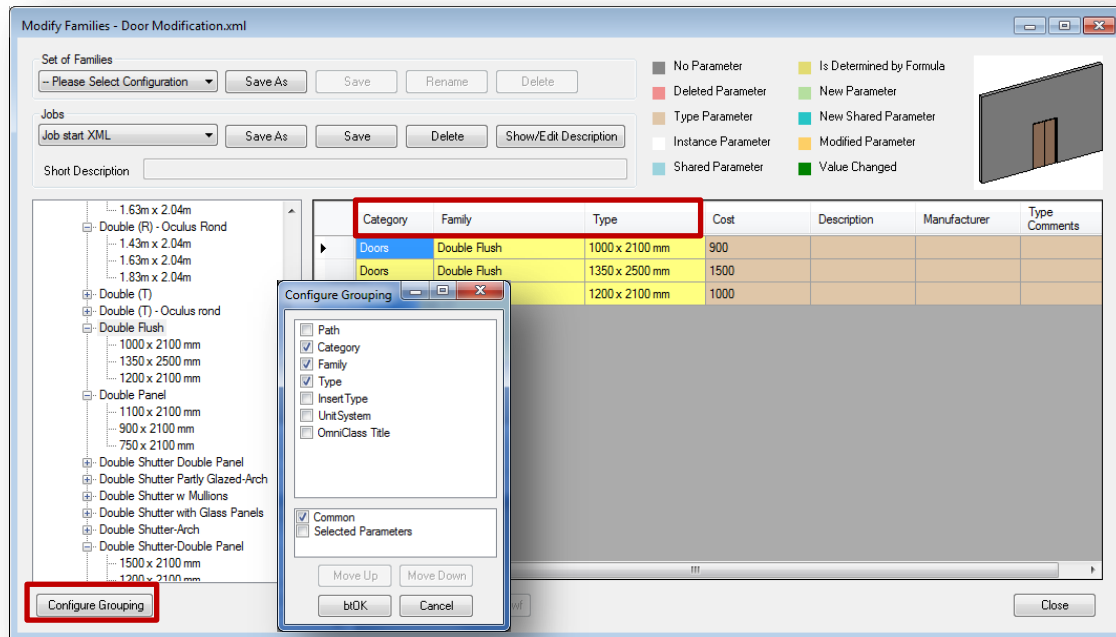
Families are displayed in the table with their parameters. Every type is displayed in a separate row. Grouping parameters are displayed in a yellow color ("Category", "Family", "Type"). Select other parameters ("Cost", "Description" etc.) with **Select Parameters**.

The screenshot displays the AGACAD software interface. On the left, the 'Catalog Families' tree is visible, showing a hierarchy of door families. The 'Doors' category is expanded, revealing sub-families like 'Double - Flush (AUS)', 'Double - Offset (4) (AUS)', 'Double (R)', 'Double (R) - Oculus Carré', and 'Double (R) - Oculus Rond'. Each sub-family lists its dimensions. On the right, a table displays the parameters for these families. The table has columns for Category, Family, Type, Cost, Description, Frame Depth, and Frame Material. The 'Doors' category is selected, and the table lists various door types with their dimensions and costs. The 'Frame Depth' and 'Frame Material' columns are currently empty. At the bottom of the interface, there are buttons for 'Configure Grouping', 'Export to Excel', 'Select Parameters', 'Edit Family', 'Preview 3D dwf', and 'Close'.

Category	Family	Type	Cost	Description	Frame Depth	Frame Material
Doors	Double - Flush (AUS)	720	0	2x720		
Doors	Double - Flush (AUS)	620	0	2x620		
Doors	Double - Flush (AUS)	820	0	2x820		
Doors	Double - Flush (AUS)	920	0	2x920		
Doors	Double - Flush (AUS)	820 Existing	0	2x820		
Doors	Double - Offset (4) (AUS)	1200 x 2143mm	0		50	Pivot Doo
Doors	Double (R)	1.83m x 2.04m	0			
Doors	Double (R)	1.43m x 2.04m	0			
Doors	Double (R)	1.63m x 2.04m	0			
Doors	Double (R) - Oculus Carré	1.83m x 2.04m	0			

Modify Families

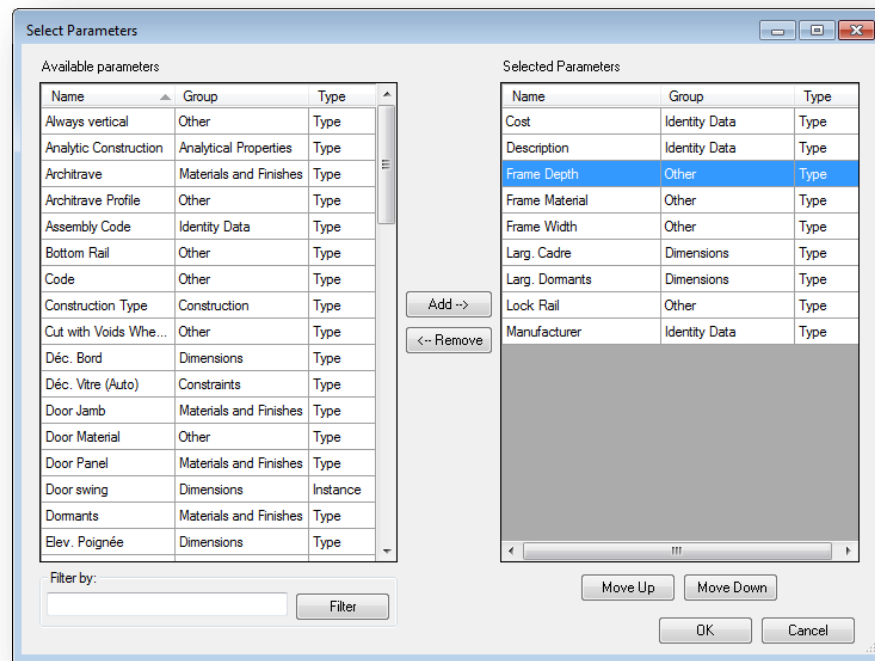
If “Category”, “Family” and “Type” are selected in **Configure Grouping**, then elements will be expanded and filtered under these criteria.



Modify Families

Parameters can be selected with **Select Parameters**.

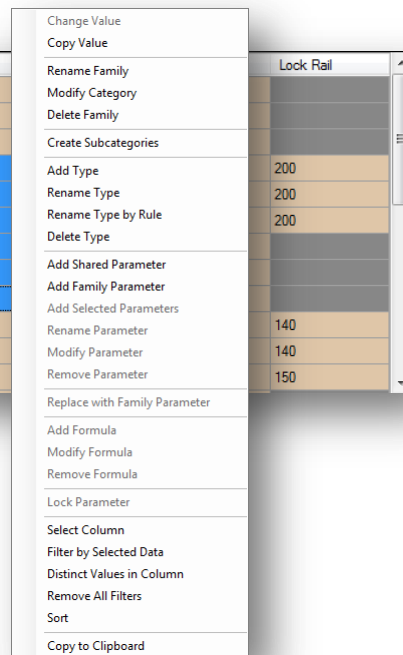
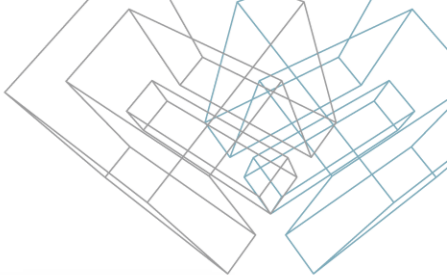
- All available parameters from the selected families can be seen on the left side of the dialog.
- Select the parameters you would like to modify by adding them to the right side of the dialog.
- Adding new or removing parameters are available with the commands “Add” and “Remove”.
- The order of parameters can be changed with “Move Up” and “Move Down”.



Modify Families

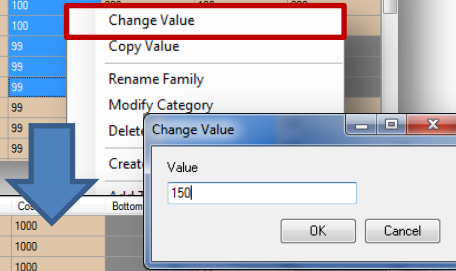
With right-click menu, you can modify selected values or parameters.

	Family	Type	Width	Height	Cost
	Double Flush	1350 x 2500 mm	1350	2500	1000
	Double Flush	1000 x 2100 mm	1000	2100	1000
	Double Flush	1200 x 2100 mm	1200	2100	1000
	Double Panel	750 x 2100 mm	750	2100	100
	Double Panel	1000 x 2100 mm	1000	2100	100
	Double Panel	900 x 2100 mm	900	2100	100
	Double Shutter Double Panel	1000 x 2100 mm	1000	2100	99
	Double Shutter Double Panel	1200 x 2100 mm	1200	2100	99
▶	Double Shutter Double Panel	1350 x 2100 mm	1350	2100	99
	Double Shutter Partly Glazed-Arch	1800 x 2100 x 900 mm	1800	2100	99
	Double Shutter Partly Glazed-Arch	1500 x 2100 mm	1500	2100	99
	Double Shutter Partly Glazed-Arch	1200 x 2100 x 600 mm	1200	2100	99



- Change Value
- Copy Value
- Rename Family
- Modify Category
- Delete Family
- Create Subcategories
- Add Type
- Rename Type
- Rename Type by Rule
- Delete Type
- Add Shared Parameter
- Add Family Parameter
- Add Selected Parameters
- Rename Parameter
- Modify Parameter
- Remove Parameter
- Replace with Family Parameter
- Add Formula
- Modify Formula
- Remove Formula
- Lock Parameter
- Select Column
- Filter by Selected Data
- Distinct Values in Column
- Remove All Filters
- Sort
- Copy to Clipboard

Modify Families – Change Value



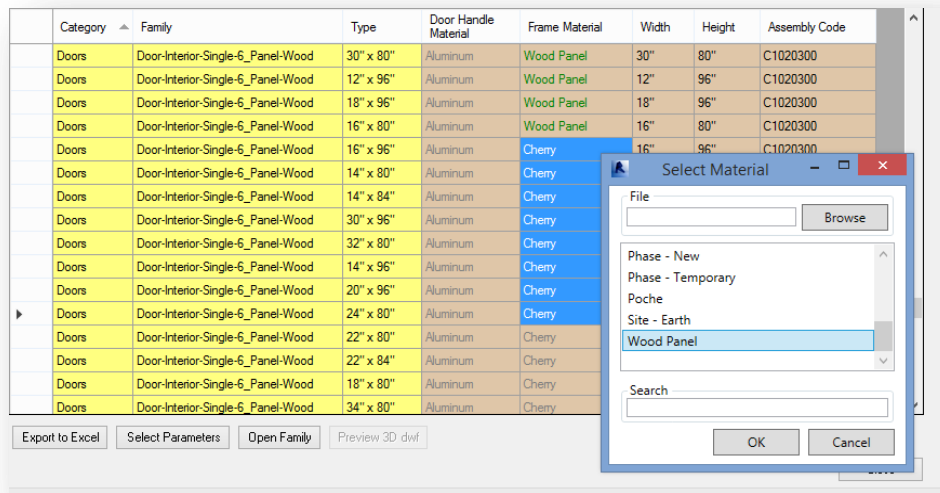
Family	Type	Width	Height	Cost	Bottom Rail	Middle Rail	Lock Rail
Double Flush	1350 x 2500 mm	1350	2500	1000		100	
Double Flush	1000 x 2100 mm	1000	2100	1000		100	
Double Flush	1200 x 2100 mm	1200	2100	1000		50	
Double Panel	750 x 2100 mm	750	2100	100	200	50	200
Double Panel	1000 x 2100 mm	1000	2100	100			
Double Panel	900 x 2100 mm	900	2100	100			
Double Shutter Double Panel	1000 x 2100 mm	1000	2100	99			
Double Shutter Double Panel	1200 x 2100 mm	1200	2100	99			
Double Shutter Double Panel	1350 x 2100 mm	1350	2100	99			
Double Shutter Partly Glazed-Arch	1800 x 2100 x 900 mm	1800	2100	99			
Double Shutter Partly Glazed-Arch	1500 x 2100 mm	1500	2100	99			
Double Shutter Partly Glazed-Arch	1200 x 2100 x 600 mm	1200	2100	99			

Family	Type	Width	Height	Cost	Bottom Rail	Middle Rail	Lock Rail
Double Flush	1350 x 2500 mm	1350	2500	1000		100	
Double Flush	1000 x 2100 mm	1000	2100	1000		100	
Double Flush	1200 x 2100 mm	1200	2100	1000		50	
Double Panel	750 x 2100 mm	750	2100	150	200	50	200
Double Panel	1000 x 2100 mm	1000	2100	150			
Double Panel	900 x 2100 mm	900	2100	150			
Double Shutter Double Panel	1000 x 2100 mm	1000	2100	150			
Double Shutter Double Panel	1200 x 2100 mm	1200	2100	150			
Double Shutter Double Panel	1350 x 2100 mm	1350	2100	150			
Double Shutter Partly Glazed-Arch	1800 x 2100 x 900 mm	1800	2100	99	250	100	140
Double Shutter Partly Glazed-Arch	1500 x 2100 mm	1500	2100	99	250	60	140
Double Shutter Partly Glazed-Arch	1200 x 2100 x 600 mm	1200	2100	99	250	50	150

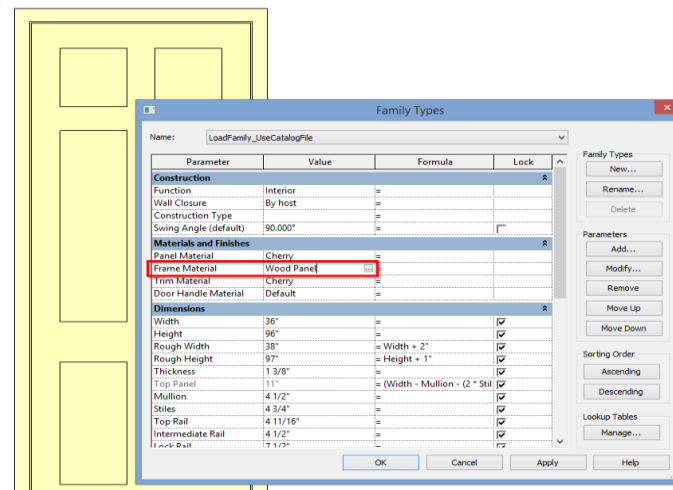
Change Value – changes values of selected parameters.

Changed values will be displayed in green.

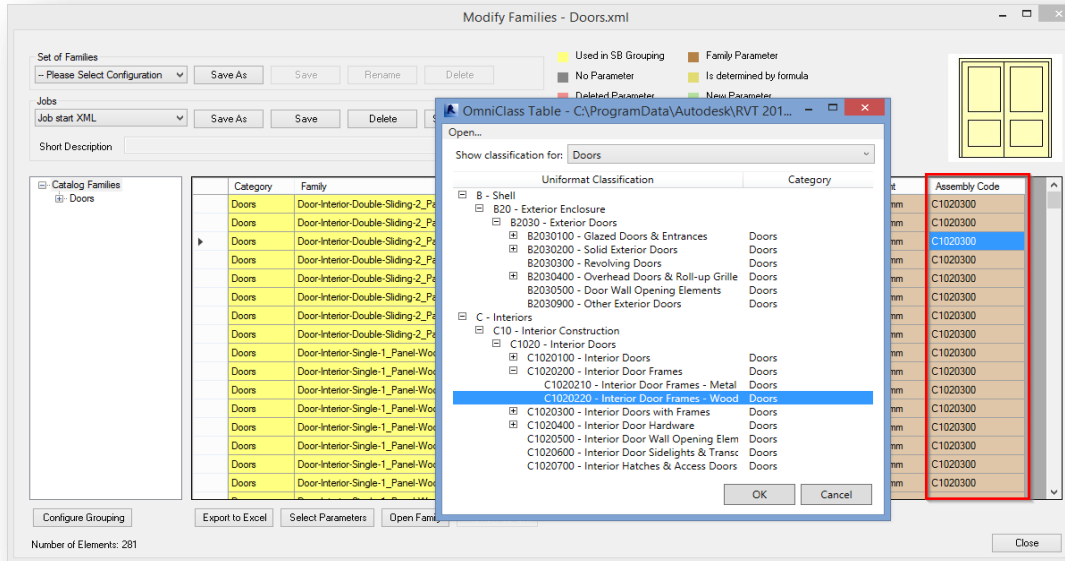
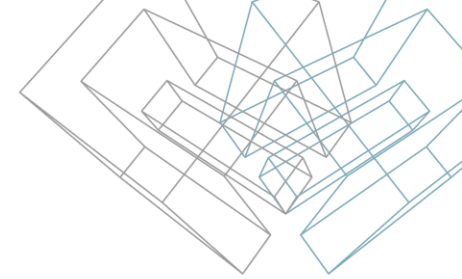
Modify Families – Change Value



You can modify not only regular parameter values but also the materials of selected families. The list of materials will come from the current family or from another family you select.

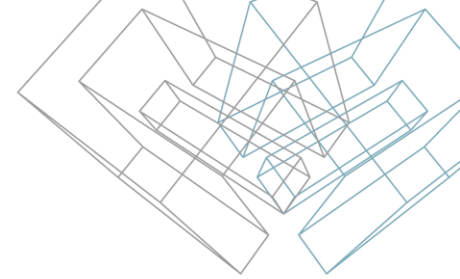


Modify Families – Change Value



You can easily change Assembly Code, OmniClass, etc.

Modify Families – Copy Value



The screenshot illustrates the 'Copy Value' process in AGACAD. On the left, a table with columns 'Middle Rail' and 'Lock Rail' is shown. A context menu is open, with 'Copy Value' highlighted. A dialog box titled 'Select Where to Copy' is displayed, showing a list of parameters: Bottom Rail, Cost, Height, Lock Rail, Middle Rail (selected), and Width. The 'Items selected' count is 1. A large blue arrow points to the right, where the same table is shown with the 'Middle Rail' values updated to 140, 140, 150, 200, 200, and 200, all displayed in green.

Middle Rail	Lock Rail
50	
50	
0	
0	
30	
50	
100	140
60	140
50	150
50	200
100	200
100	200

Context Menu Options:

- Change Value
- Copy Value
- Rename Family
- Modify Category
- Delete Family
- Create Subcategories
- Add Type
- Rename Type
- Rename Type by Rule
- Delete Type
- Add Shared Parameter
- Add Family Parameter
- Add Selected Parameters
- Rename Parameter
- Modify Parameter
- Remove Parameter
- Replace with Family Parameter
- Add Formula
- Modify Formula

Select Where to Copy Dialog:

Parameter Name

- Bottom Rail
- Cost
- Height
- Lock Rail
- Middle Rail
- Width

Items selected - 1

OK Cancel

Copy Value – makes a copy of selected values from one parameter to another.

Changed values will be displayed in green.

Modify Families – Rename Family

The diagram illustrates the process of renaming a family in Revit. A blue arrow points from the initial state to the final state.

Initial State (Left):

- A list of families is shown. The family 'Double Shutter-Double Panel' is selected.
- A context menu is open, and the 'Rename Family' option is highlighted.
- A 'Rename Family Name' dialog box is shown, with the text 'Double Shutter Panel' entered in the 'Value' field.

Final State (Right):

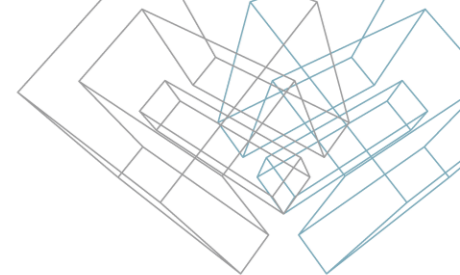
- The family list is updated, showing the renamed families in green: 'Double Shutter Panel', 'Double Shutter Panel', and 'Double Shutter Panel'.

Family	Type
Double Shutter-Arch	1500 x 2100 x 750 mm
Double Shutter-Arch	1800 x 2100 x 900 mm
Double Shutter-Arch	1200 x 2100 x 600 mm
Double Shutter Panel	1800 x 2100 mm
Double Shutter Panel	1200 x 2100 mm
Double Shutter Panel	1500 x 2100 mm
Double Sliding Folding	1500 x 2100 mm
Double Sliding Folding	2400 x 2100 mm
Double Sliding Folding	1800 x 2100 mm
Double Shutter Partly Glazed-Arch	1800 x 2100 x 900 mm
Double Shutter Partly Glazed-Arch	1500 x 2100 mm
Double Shutter Partly Glazed-Arch	1200 x 2100 x 600 mm

Rename Family Name – will rename the selected family.

Changed names will be displayed in green.

Modify Families – Delete Family

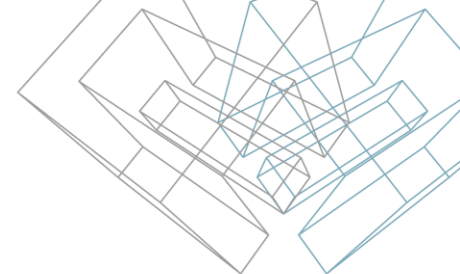


Family	Type
Double Flush	1350 x 2500 mm
Double Flush	1000 x 2100 mm
Double Flush	1200 x 2100 mm
Double Shutter Double Panel	1000 x 2100 mm
Double Shutter Double Panel	
Double Shutter Double Panel	
Double Shutter w Mullions	
Double Shutter w Mullions	
Double Shutter w Mullions	
Double Shutter with Glass Pa	
Double Shutter with Glass Pa	
Double Shutter with Glass Pa	

- Change Value
- Copy Value
- Rename Family
- Modify Category
- Delete Family
- Create Subcategories
- Add Type
- Rename Type
- Rename Type by Rule
- Delete Type
- Add Shared Parameter
- Add Family Parameter
- Add Selected Parameters
- Rename Parameter
- Modify Parameter
- Remove Parameter
- Replace with Family Parameter
- Add Formula
- Modify Formula

Delete Family – deletes the selected family file from the library.

Modify Families – Create Subcategories

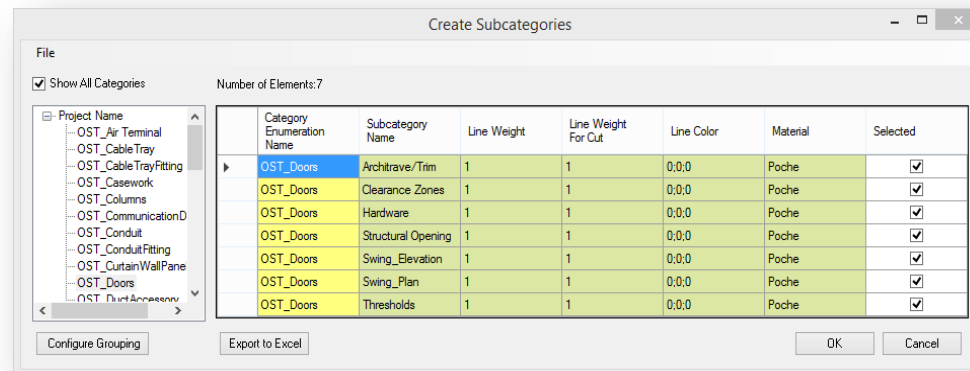


Family	Type
Double Flush	1350 x 2500 mm
Double Flush	1000 x 2100 mm
Double Flush	1200 x 2100 mm
Double Shutter Double Panel	1000 x 2100 mm
Double Shutter Double Panel	
Double Shutter Double Panel	
Double Shutter w Mullions	
Double Shutter w Mullions	
Double Shutter w Mullions	
Double Shutter with Glass Panel	
Double Shutter with Glass Panel	
Double Shutter with Glass Panel	

Change Value
Copy Value
Rename Family
Modify Category
Delete Family
Create Subcategories
Add Type
Rename Type
Rename Type by Rule
Delete Type
Add Shared Parameter
Add Family Parameter
Add Selected Parameters
Rename Parameter
Modify Parameter
Remove Parameter
Replace with Family Parameter
Add Formula
Modify Formula

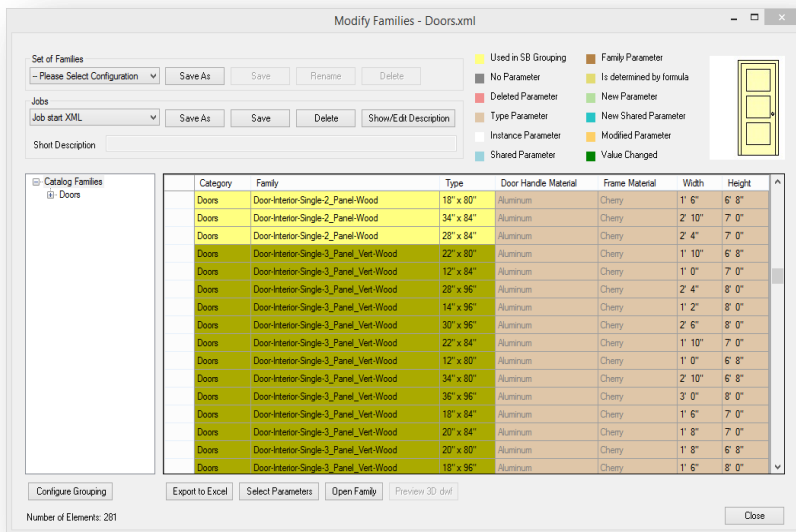
Create Subcategories – creates subcategories in a family. The list of subcategories comes from an external text file, which can be easily modified in accordance with company or country standards. The default list of subcategories comes from ANZRS!

Here you can select the subcategories from the list:

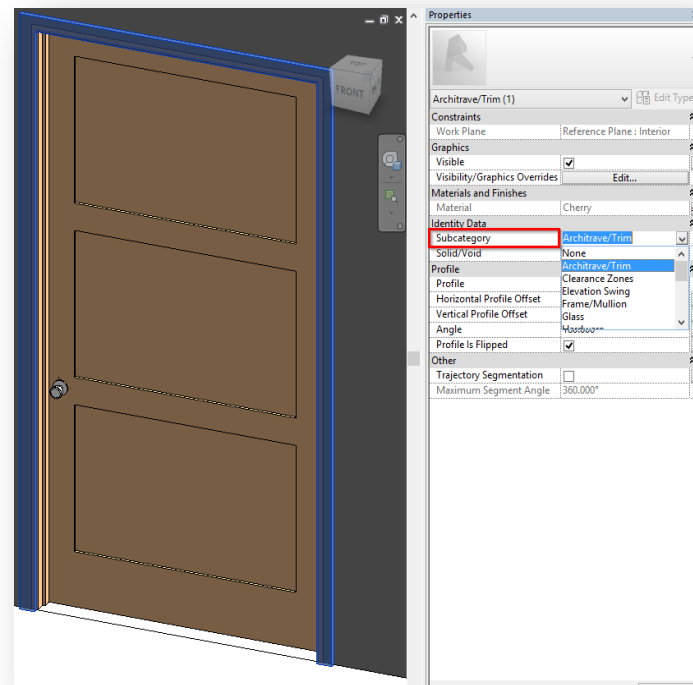


Modify Families – Create Subcategories

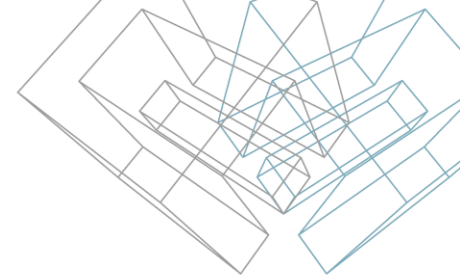
The families will change color if you add a task to create subcategories.



After running saved modifications, every family will have a list of subcategories, which can easily be assigned to solids.



Modify Families – Rename Type



Family	Type
Double Shutter w Mullions	1200 x 2100 mm
Double Shutter w Mullions	1800 x 2100 mm
Double Shutter w Mullions	
Double Shutter with Glass Pa	
Double Shutter with Glass Pa	
Double Shutter with Glass Pa	
Double Shutter-Arch	
Double Shutter-Arch	
Double Shutter-Arch	

- Change Value
- Copy Value
- Rename Family
- Modify Category
- Delete Family
- Create Subcategories
- Add Type
- Rename Type**
- Rename Type by Rule
- Delete Type
- Add Shared Parameter
- Add Family Parameter
- Add Selected Parameters
- Rename Parameter
- Modify Parameter
- Remove Parameter
- Replace with Family Parameter
- Add Formula
- Modify Formula
- Remove Formula

Rename Type – renames selected type names. Renamed types will be displayed in green.

Rename Type Name

Value
1300 x 2200 mm

OK Cancel

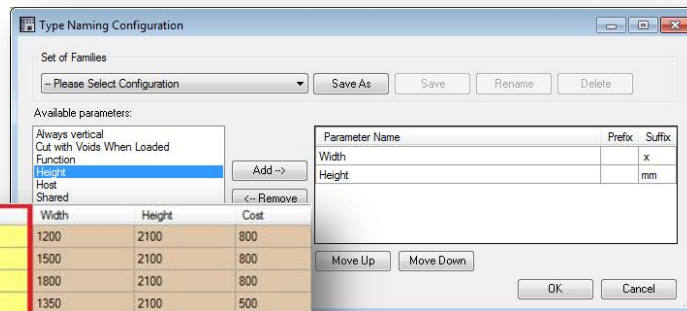
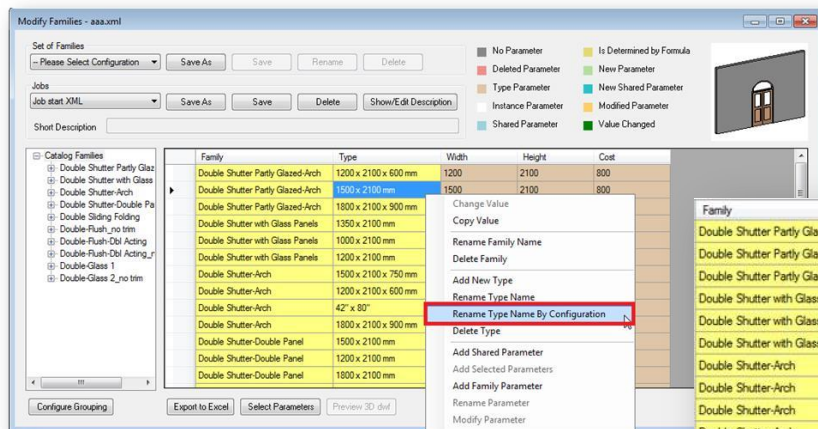


Family	Type
Double Shutter w Mullions	1300 x 2200 mm
Double Shutter w Mullions	1800 x 2100 mm
Double Shutter w Mullions	1500 x 2100 mm
Double Shutter with Glass Panels	1350 x 2100 mm
Double Shutter with Glass Panels	1300 x 2200 mm
Double Shutter with Glass Panels	1000 x 2100 mm
Double Shutter-Arch	1500 x 2100 x 750 mm
Double Shutter-Arch	1800 x 2100 x 900 mm
Double Shutter-Arch	1300 x 2200 mm

Modify Families – Rename Type by Using Rules

You can very easily add your own configuration for type names.

Let's say door type names need to be renamed as "Width x Height mm".



You will not need to rename types one by one!

Rest assured that type names will always be correct!

Modify Families – Delete Type

Delete Type – deletes selected types.

Family	Type	
Double Shutter Panel	1800 x 2100 mm	Change Value
Double Shutter Panel	1200 x 2100 mm	Copy Value
Double Shutter Panel	1500 x 2100 mm	Rename Family
Double Sliding Folding	1500 x 2100 mm	Modify Category
Double Sliding Folding	2400 x 2100 mm	Delete Family
Double Sliding Folding	1800 x 2100 mm	Create Subcategories
Double Shutter Partly Glazed-Arch	1800 x 2100 x 900 mm	Add Type
Double Shutter Partly Glazed-Arch	1500 x 2100 mm	Rename Type
Double Shutter Partly Glazed-Arch	1200 x 2100 x 600 mm	Rename Type by Rule
Double Panel	750 x 2100 mm	Delete Type
Double Panel	1000 x 2100 mm	Add Shared Parameter
Double Panel	900 x 2100 mm	Add Family Parameter
		Add Selected Parameters
		Rename Parameter
		Modify Parameter
		Remove Parameter
		Replace with Family Parameter
		Add Formula
		Modify Formula
		Remove Formula



Family	Type
Double Shutter Panel	1800 x 2100 mm
Double Shutter Panel	1200 x 2100 mm
Double Shutter Panel	1500 x 2100 mm
Double Sliding Folding	1500 x 2100 mm
Double Sliding Folding	2400 x 2100 mm
Double Sliding Folding	1800 x 2100 mm
Double Shutter Partly Glazed-Arch	1500 x 2100 mm
Double Shutter Partly Glazed-Arch	1200 x 2100 x 600 mm
Double Panel	750 x 2100 mm
Double Panel	1000 x 2100 mm
Double Panel	900 x 2100 mm

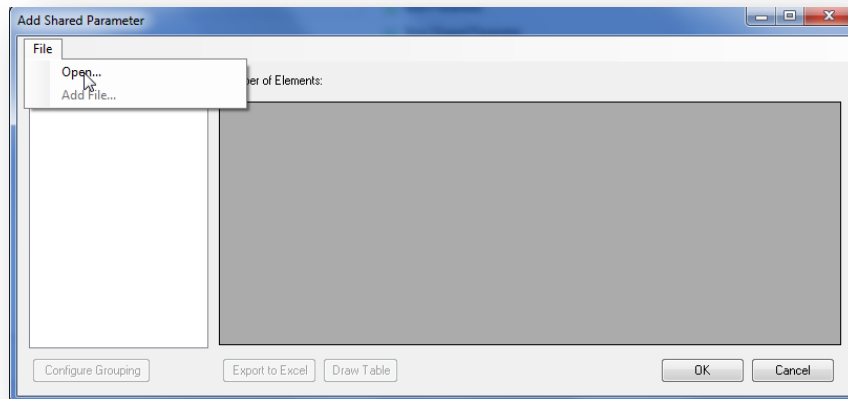
Modify Families – Add Shared Parameter

Add Shared Parameter – adds shared parameters for selected families.

Family	Type	Width
Double Flush	1350 x 2500 mm	Change Value
Double Flush	1000 x 2100 mm	Copy Value
Double Flush	1200 x 2100 mm	Rename Family
Double Flush	900 x 2100 mm	Modify Category
Double Shutter w Mullions	1300 x 2200 mm	Delete Family
Double Shutter w Mullions	1800 x 2100 mm	Create Subcategories
Double Shutter w Mullions	1500 x 2100 mm	Add Type
Double Shutter with Glass Panels	1350 x 2100 mm	Rename Type
Double Shutter with Glass Panels	1300 x 2200 mm	Rename Type by Rule
Double Shutter with Glass Panels	1000 x 2100 mm	Delete Type
		Add Shared Parameter
		Add Family Parameter
		Add Selected Parameters
		Rename Parameter
		Modify Parameter
		Remove Parameter
		Replace with Family Parameter
		Add Formula
		Modify Formula
		Remove Formula

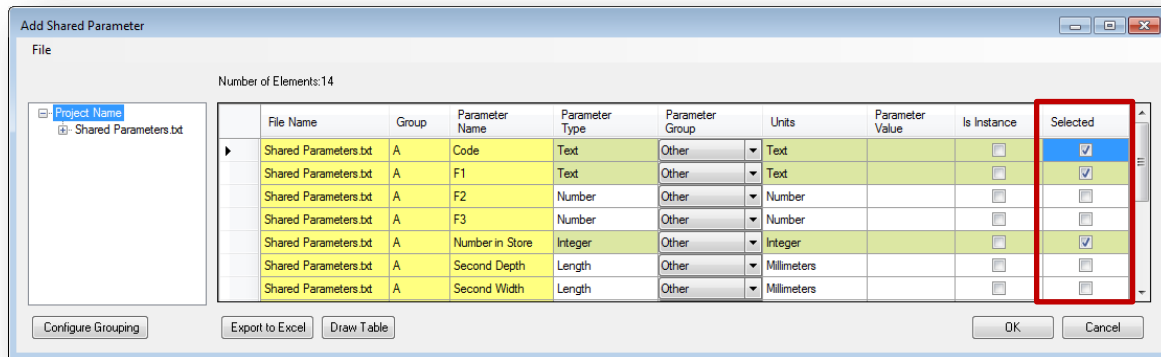


Select and open txt shared parameter file:



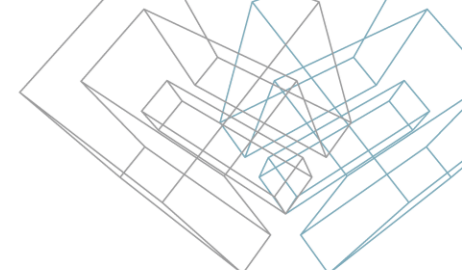
Modify Families – Add Shared Parameter

Select parameters that will be added as a shared parameter:



In this dialog, you can dictate whether the parameter should be an instance (check “Is Instance”) or a type, and you can change the parameter group (under “Parameter Group”).

Selected parameters will be displayed in green.



Modify Families – Add Shared Parameter

The three shared parameters (selected on the previous slide) will be added to selected families:

Emit from Rectangle Length	Emit from Rectangle Width	Number in Store	Code	F1
0	0	0		
0	0	0		
0	0	0		
0	0	0		
574	574	0		
574	574	0		
1174	574	0		
1174	274	0		
1174	274	0		
1174	574	0		
1174	274	0		
1174	274	0		
		0		
		0		

Cells of new shared parameters will be displayed in blue.

Modify Families – Add Shared Parameter

Add Selected Parameter – adds selected parameters with the same properties to selected families.

Family	Type	Bottom Rail	Lock Rail
Double Flush	1350 x 2500 mm		
Double Flush	1000 x 2100 mm		
Double Flush	1200 x 2100 mm		
Double Flush	900 x 2100 mm		
Double Panel	750 x 2100 mm	200	200
Double Panel	1000 x 2100 mm	200	200
Double Panel	900 x 2100 mm	200	200
Double Shutter Partly Glazed-Arch	1500 x 2100 mm	250	140
Double Shutter Partly Glazed-Arch	1200 x 2100 x 600 mm	250	150
Double Shutter w Mullions	1300 x 2200 mm	200	
Double Shutter w Mullions	1800 x 2100 mm	200	
Double Shutter w Mullions	1500 x 2100 mm	200	

Change Value
Copy Value
Rename Family
Modify Category
Delete Family
Create Subcategories
Add Type
Rename Type
Rename Type by Rule
Delete Type
Add Shared Parameter
Add Family Parameter
Add Selected Parameters
Rename Parameter
Modify Parameter
Remove Parameter
Replace with Family Parameter
Add Formula
Modify Formula
Remove Formula



Family	Type	Bottom Rail	Lock Rail
Double Flush	1350 x 2500 mm	0	0
Double Flush	1000 x 2100 mm	0	0
Double Flush	1200 x 2100 mm	0	0
Double Flush	900 x 2100 mm	0	0
Double Panel	750 x 2100 mm	200	200
Double Panel	1000 x 2100 mm	200	200
Double Panel	900 x 2100 mm	200	200
Double Shutter Partly Glazed-Arch	1500 x 2100 mm	250	140
Double Shutter Partly Glazed-Arch	1200 x 2100 x 600 mm	250	150
Double Shutter w Mullions	1300 x 2200 mm	200	
Double Shutter w Mullions	1800 x 2100 mm	200	
Double Shutter w Mullions	1500 x 2100 mm	200	

Cells of new parameter will be displayed in green.

Modify Families – Add Family Parameter

Add Family Parameter – adds new or existing parameters to selected families.

Family	Type
Double Flush	1350 x 2500 mm
Double Flush	1000 x 2100 mm
Double Flush	
Double Flush	
Double Panel	
Double Panel	
Double Panel	
Double Shutter Partly Glazed-A	
Double Shutter Partly Glazed-A	

Change Value

Copy Value

Rename Family

Modify Category

Delete Family

Create Subcategories

Add Type

Rename Type

Rename Type by Rule

Delete Type

Add Shared Parameter

Add Family Parameter

Add Selected Parameters

Rename Parameter

Modify Parameter

Remove Parameter

Add Family Parameter

Select Item

New Parameter

Parameter Name

Fire Protection

Parameter Group

Fire Protection

Parameter Type

Number

☐ Is Instance ☐ Is Shared

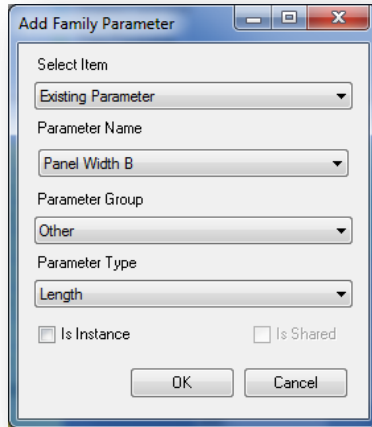
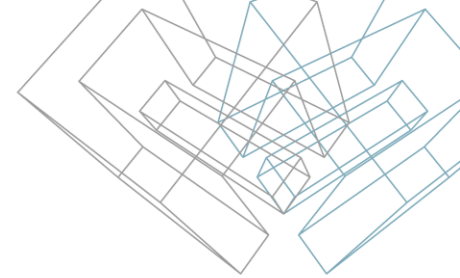
OK Cancel



Family	Type	Fire Protection
Double Flush	1350 x 2500 mm	0
Double Flush	1000 x 2100 mm	0
Double Flush	1200 x 2100 mm	0
Double Flush	900 x 2100 mm	0
Double Panel	750 x 2100 mm	0
Double Panel	1000 x 2100 mm	0
Double Panel	900 x 2100 mm	0
Double Shutter Partly Glazed-Arch	1500 x 2100 mm	
Double Shutter Partly Glazed-Arch	1200 x 2100 x 600 mm	

Cells of new parameter will be displayed in green.

Modify Families – Add Family Parameter



Select Item – choose whether a New or Existing parameter will be created.

Parameter Name – add a new parameter name or select an existing one.

Parameter Group – select the parameter group. If an existing parameter is selected, then the group will be exactly the same as in the existing parameter. It can be modified if needed.

Parameter Type – select the type of parameter. If an existing parameter is selected, then the type will be exactly the same as in the existing parameter. It can be modified if needed.

Is Instance – select if parameter is an instance.

Modify Families – Rename Parameter

Rename Parameter – renames parameter name for selected families.

Family	Type	Code
Double Flush	1350 x 2500 mm	
Double Flush	1000 x 2100 mm	
Double Flush	1200 x 2100 mm	
Double Flush	900 x 2100 mm	

- Change Value
- Copy Value
- Rename Family
- Modify Category
- Delete Family
- Create Subcategories
- Add Type
- Rename Type
- Rename Type by Rule
- Delete Type
- Add Shared Parameter
- Add Family Parameter
- Add Selected Parameters
- Rename Parameter**
- Modify Parameter
- Remove Parameter
- Replace with Family Parameter
- Add Formula
- Modify Formula
- Remove Formula



Family	Type	Main Code
Double Flush	1350 x 2500 mm	
Double Flush	1000 x 2100 mm	
Double Flush	1200 x 2100 mm	
Double Flush	900 x 2100 mm	

Rename Parameter

Value

Main Code

OK

Cancel

Modify Families – Modify Parameter

Modify Parameter – modifies parameter settings for selected families.

Family	Type	Bottom Rail
Double Panel	750 x 2100 mm	200
Double Panel	1000 x 2100 mm	20
Double Panel	900 x 2100 mm	20
Double Shutter Partly Glazed-Arch	1800 x 2100 x 90...	25
Double Shutter Partly Glazed-Arch	1500 x 2100 mm	25
Double Shutter Partly Glazed-Arch	1200 x 2100 x 60...	25
Double Shutter w Mullions	1200 x 2100 mm	20
Double Shutter w Mullions	1800 x 2100 mm	20
Double Shutter w Mullions	1500 x 2100 mm	20

- Change Value
- Copy Value
- Rename Family
- Modify Category
- Delete Family
- Create Subcategories
- Add Type
- Rename Type
- Rename Type by Rule
- Delete Type
- Add Shared Parameter
- Add Family Parameter
- Add Selected Parameters
- Rename Parameter
- Modify Parameter**
- Remove Parameter
- Replace with Family Parameter
- Add Formula
- Modify Formula
- Remove Formula

Add Family Parameter

Parameter Name
Bottom Rail

Parameter Group
Dimensions

Parameter Type
Length

☒ Is Instance ☐ Is Shared

OK Cancel

Family	Type	Bottom Rail
Double Panel	750 x 2100 mm	200
Double Panel	1000 x 2100 mm	200
Double Panel	900 x 2100 mm	200
Double Shutter Partly Glazed-Arch	1800 x 2100 x 90...	250
Double Shutter Partly Glazed-Arch	1500 x 2100 mm	250
Double Shutter Partly Glazed-Arch	1200 x 2100 x 60...	250
Double Shutter w Mullions	1200 x 2100 mm	200
Double Shutter w Mullions	1800 x 2100 mm	200
Double Shutter w Mullions	1500 x 2100 mm	200

Cells of modified parameter will be displayed in green.

Modify Families – Remove Parameter

Remove Parameter – deletes parameters for selected families.

Family	Type	Bottom Rail
Double Shutter Partly Glazed-Arch	1500 x 2100 mm	250
Double Shutter Partly Glazed-Arch	1200 x 2100 x 60...	250
Double Shutter-Arch	1500 x 2100 x 75...	250
Double Shutter-Arch	1800 x 2100 x 90...	250
Double Shutter-Arch	1300 x 2200 mm	250
Double Shutter Panel	1800 x 2100 mm	250
Double Shutter Panel	1200 x 2100 mm	250
Double Shutter Panel	1500 x 2100 mm	250

Change Value

Copy Value

Rename Family

Modify Category

Delete Family

Create Subcategories

Add Type

Rename Type

Rename Type by Rule

Delete Type

Add Shared Parameter

Add Family Parameter

Add Selected Parameters

Rename Parameter

Modify Parameter

Remove Parameter

Replace with Family Parameter

Add Formula

Modify Formula

Remove Formula

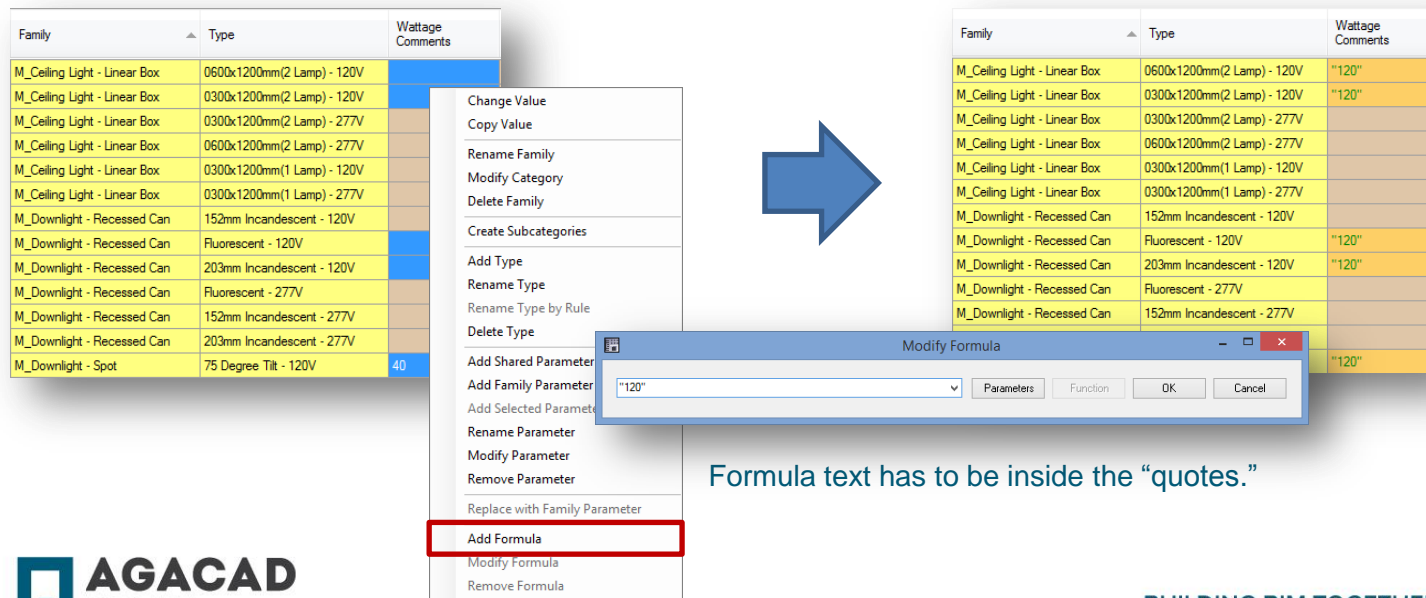


Family	Type	Bottom Rail
Double Shutter Partly Glazed-Arch	1500 x 2100 mm	250
Double Shutter Partly Glazed-Arch	1200 x 2100 x 60...	250
Double Shutter-Arch	1500 x 2100 x 75...	250
Double Shutter-Arch	1800 x 2100 x 90...	250
Double Shutter-Arch	1300 x 2200 mm	250
Double Shutter Panel	1800 x 2100 mm	250
Double Shutter Panel	1200 x 2100 mm	250
Double Shutter Panel	1500 x 2100 mm	250

Cells of deleted parameters will be displayed in red.

Modify Families – Add Formula

Add Formula – adds formula values for selected cells.



The diagram illustrates the process of adding a formula to a table. On the left, a table with columns 'Family', 'Type', and 'Wattage Comments' is shown. A context menu is open over the table, with the 'Add Formula' option highlighted. A large blue arrow points to the right, where the same table is shown with formula values added to the 'Wattage Comments' column. A 'Modify Formula' dialog box is also shown, with the text '"120"' entered in the formula field.

Family	Type	Wattage Comments
M_Ceiling Light - Linear Box	0600x1200mm(2 Lamp) - 120V	
M_Ceiling Light - Linear Box	0300x1200mm(2 Lamp) - 120V	
M_Ceiling Light - Linear Box	0300x1200mm(2 Lamp) - 277V	
M_Ceiling Light - Linear Box	0600x1200mm(2 Lamp) - 277V	
M_Ceiling Light - Linear Box	0300x1200mm(1 Lamp) - 120V	
M_Ceiling Light - Linear Box	0300x1200mm(1 Lamp) - 277V	
M_Downlight - Recessed Can	152mm Incandescent - 120V	
M_Downlight - Recessed Can	Fluorescent - 120V	
M_Downlight - Recessed Can	203mm Incandescent - 120V	
M_Downlight - Recessed Can	Fluorescent - 277V	
M_Downlight - Recessed Can	152mm Incandescent - 277V	
M_Downlight - Recessed Can	203mm Incandescent - 277V	
M_Downlight - Spot	75 Degree Tilt - 120V	40

Context Menu Options:

- Change Value
- Copy Value
- Rename Family
- Modify Category
- Delete Family
- Create Subcategories
- Add Type
- Rename Type
- Rename Type by Rule
- Delete Type
- Add Shared Parameter
- Add Family Parameter
- Add Selected Parameter
- Rename Parameter
- Modify Parameter
- Remove Parameter
- Replace with Family Parameter
- Add Formula**
- Modify Formula
- Remove Formula

Resulting Table:

Family	Type	Wattage Comments
M_Ceiling Light - Linear Box	0600x1200mm(2 Lamp) - 120V	"120"
M_Ceiling Light - Linear Box	0300x1200mm(2 Lamp) - 120V	"120"
M_Ceiling Light - Linear Box	0300x1200mm(2 Lamp) - 277V	
M_Ceiling Light - Linear Box	0600x1200mm(2 Lamp) - 277V	
M_Ceiling Light - Linear Box	0300x1200mm(1 Lamp) - 120V	
M_Ceiling Light - Linear Box	0300x1200mm(1 Lamp) - 277V	
M_Downlight - Recessed Can	152mm Incandescent - 120V	
M_Downlight - Recessed Can	Fluorescent - 120V	"120"
M_Downlight - Recessed Can	203mm Incandescent - 120V	"120"
M_Downlight - Recessed Can	Fluorescent - 277V	
M_Downlight - Recessed Can	152mm Incandescent - 277V	
M_Downlight - Spot	75 Degree Tilt - 120V	"120"

Modify Formula Dialog:

Formula: "120"

Buttons: Parameters, Function, OK, Cancel

Modify Families – Modify Formula

Modify Formula – changes formula for selected cells.

Family	Type	Wattage Comments
M_Pendant Light - Hemisphere	100W - 277V	220
M_Pendant Light - Linear - 1 Lamp	1200mm - 120V	160
M_Pendant Light - Linear - 1 Lamp	2400mm - 277V	160
M_Pendant Light - Linear - 1 Lamp	2400mm - 120V	160
M_Pendant Light - Linear - 1 Lamp	1200mm - 277V	160

Change Value

Copy Value

Rename Family

Modify Category

Delete Family

Create Subcategories

Add Type

Rename Type

Rename Type by Rule

Delete Type

Add Shared Parameter

Add Family Parameter

Add Selected Parameters

Rename Parameter

Modify Parameter

Remove Parameter

Replace with Family Parameter

Add Formula

Modify Formula

Remove Formula



Family	Type	Wattage Comments
M_Pendant Light - Disk	100W - 277V	220
M_Pendant Light - Hemisphere	100W - 277V	220
M_Pendant Light - Linear - 1 Lamp	1200mm - 120V	"120"
M_Pendant Light - Linear - 1 Lamp	1200mm - 277V	160
M_Pendant Light - Disk	150W - 120V	220
M_Pendant Light - Hemisphere	150W - 120V	220

Modify Formula

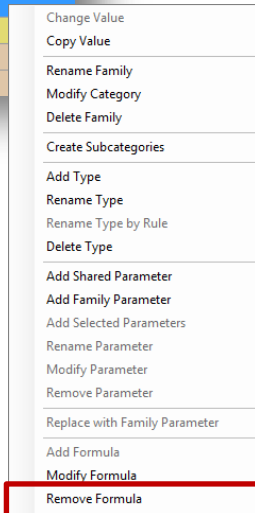
Width * (2 * Wattage)

ParametersFunctionOKCancel

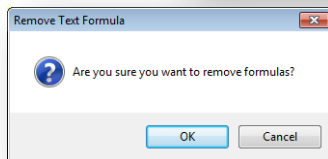
Modify Families – Remove Formula

Remove Formula – removes text formulas from selected cells.

Family	Type	Wattage Comments
M_Downlight - Wall Washer	203mm Incandescent - 277V	
M_Pendant Light - Linear - 1 Lamp	2400mm - 120V	160
M_Pendant Light - Linear - 1 Lamp	2400mm - 277V	160
M_Downlight - Spot	60 Degree Tilt - 120V	40
M_Downlight - Spot	60 Degree Tilt - 277V	40



Family	Type	Wattage Comments
M_Downlight - Wall Washer	203mm Incandescent - 277V	
M_Pendant Light - Linear - 1 Lamp	2400mm - 120V	160
M_Pendant Light - Linear - 1 Lamp	2400mm - 277V	160
M_Downlight - Spot	60 Degree Tilt - 120V	40



Deletes formulas and leaves the values.

Modify Families – Select Column

Select Column – selects the entire column for later modification.

Family	Type	Cost
Double Flush	1350 x 2500 mm	1000
Double Flush	1000 x 2100 mm	1000
Double Flush	1200 x 2100 mm	1000
Double Panel	750 x 2100 mm	100
Double Panel	1000 x 2100 mm	100
Double Panel	900 x 2100 mm	100
Double Shutter Double Panel	1000 x 2100 mm	99
Double Shutter Double Panel	1200 x 2100 mm	99
Double Shutter Double Panel	1350 x 2100 mm	99
Double Shutter Partly Glazed-Arch	1800 x 2100 x 90...	99
Double Shutter Partly Glazed-Arch	1500 x 2100 mm	99
Double Shutter Partly Glazed-Arch	1200 x 2100 x 60...	99

Change Value

Copy Value

Rename Family

Modify Category

Delete Family

Create Subcategories

Add Type

Rename Type

Rename Type by Rule

Delete Type

Add Shared Parameter

Add Family Parameter

Add Selected Parameters

Rename Parameter

Modify Parameter

Remove Parameter

Replace with Family Parameter

Add Formula

Modify Formula

Remove Formula

Lock Parameter

Select Column

Filter by Selected Data



Family	Type	Cost
Double Flush	1350 x 2500 mm	1000
Double Flush	1000 x 2100 mm	1000
Double Flush	1200 x 2100 mm	1000
Double Panel	750 x 2100 mm	100
Double Panel	1000 x 2100 mm	100
Double Panel	900 x 2100 mm	100
Double Shutter Double Panel	1000 x 2100 mm	99
Double Shutter Double Panel	1200 x 2100 mm	99
Double Shutter Double Panel	1350 x 2100 mm	99
Double Shutter Partly Glazed-Arch	1800 x 2100 x 90...	99
Double Shutter Partly Glazed-Arch	1500 x 2100 mm	99
Double Shutter Partly Glazed-Arch	1200 x 2100 x 60...	99

Modify Families – Filter by Selected Data

Filter by Selected Data – filters elements according to the selected values.

Family	Type
Double Flush	1350 x 2500 mm
Double Flush	1000 x 2100 mm
Double Flush	1200 x 2100 mm
Double Panel	750 x 2100 mm
Double Panel	1000 x 2100 mm
Double Panel	900 x 2100 mm
Double Shutter Double Panel	1000 x 2100 mm
Double Shutter Double Panel	1200 x 2100 mm
Double Shutter Double Panel	1350 x 2100 mm
Double Shutter Partly Glazed-Arch	1800 x 2100 mm
Double Shutter Partly Glazed-Arch	1500 x 2100 mm
Double Shutter Partly Glazed-Arch	1200 x 2100 mm

Change Value

Copy Value

Rename Family

Modify Category

Delete Family

Create Subcategories

Add Type

Rename Type

Rename Type by Rule

Delete Type

Add Shared Parameter

Add Family Parameter

Add Selected Parameters

Rename Parameter

Modify Parameter

Remove Parameter

Replace with Family Parameter

Add Formula

Modify Formula

Remove Formula

Lock Parameter

Select Column

Filter by Selected Data



Family	Type
Double Panel	750 x 2100 mm
Double Panel	1000 x 2100 mm
Double Panel	900 x 2100 mm
Double Shutter Double Panel	1000 x 2100 mm
Double Shutter Double Panel	1200 x 2100 mm
Double Shutter Double Panel	1350 x 2100 mm

Modify Families – Export to Excel

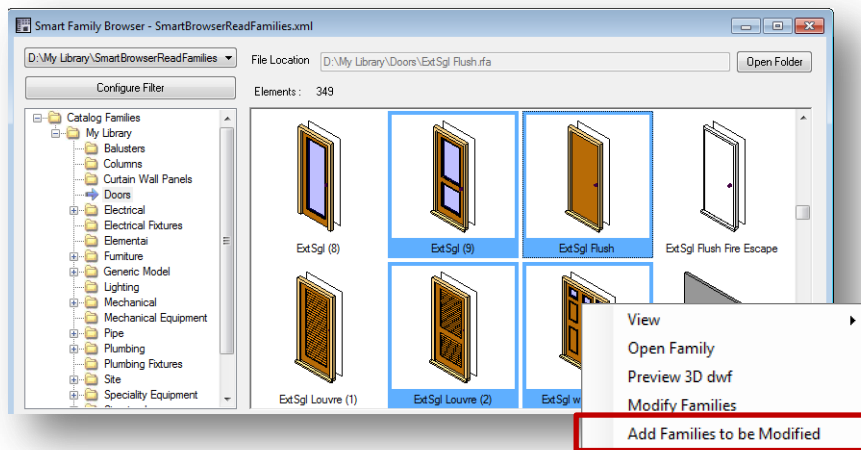
Export to Excel – exports all visible data to MS Excel spreadsheet.

The screenshot displays the 'Modify Families' dialog box on the left and a Microsoft Excel spreadsheet on the right. The dialog box shows a table of family data with columns: Category, Family, Type, Cost, Description, Frame Depth, and Frame Material. The 'Export to Excel' button is highlighted with a red box. The Excel spreadsheet shows the exported data in a table with columns: Category, Family, Type, Cost, Description, Frame Depth, and Frame Material. The data is organized into rows, with the first row being the header and subsequent rows containing specific family data.

Category	Family	Type	Cost	Description	Frame Depth	Frame Material
Doors	Double - Flush (A...	720	1000	2x720	20	
Doors	Double - Flush (A...	620	1000	2x620	20	
Doors	Double - Flush (A...	820	1000	2x820	20	
Doors	Double - Flush (A...	920	1000	2x920	20	
Doors	Double - Flush (A...	820 Existing	1000	2x820	20	
Doors	Double - Offset (4...	1200 x 2143mm	1000		50	Pivot Door
Doors	Double (R)	1.83m x 2.04m	1000			
Doors	Double (R)	1.43m x 2.04m	1000			
Doors	Double (R)	1.63m x 2.04m	1000			
Doors	Double (R) - Ocul...	1.83m x 2.04m	1000			

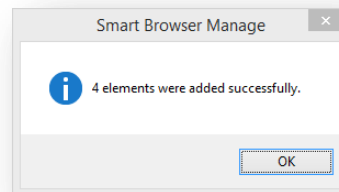
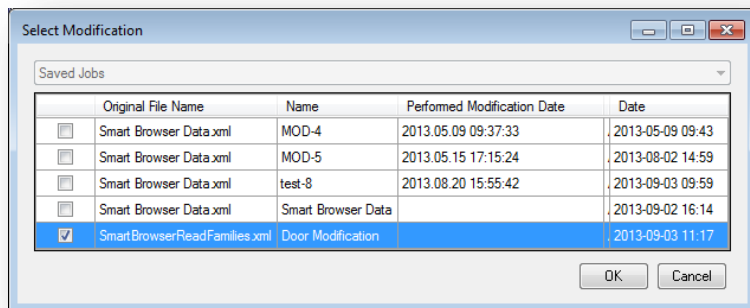
Smart Family Browser

Add Families to be Modified – adds families to the group of families to be modified that was created earlier using “Modify Families”. This is now an opportunity to add to that group.



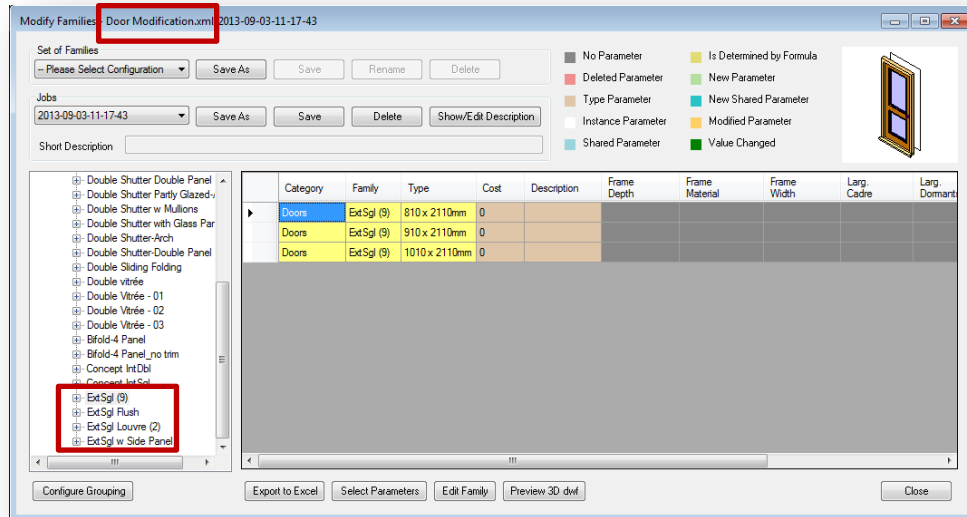
Smart Family Browser

Select modification:



Smart Family Browser

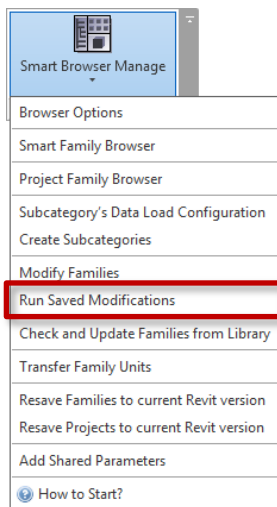
To continue working with the families, go to **Modify Families**, and select the same group:



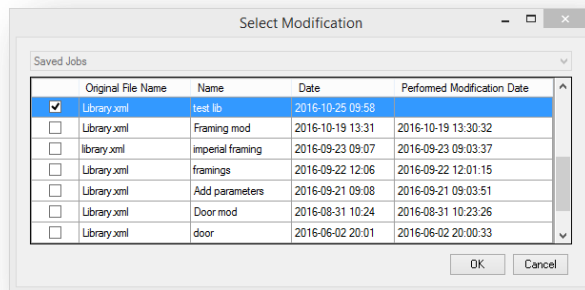
Run Saved Modifications

Run Saved Modification

Run Saved Modification – runs the process of modifications that were added before.

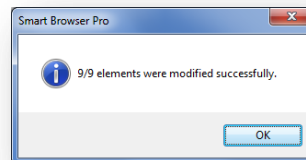
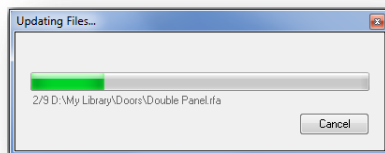


Select modification according to its name:



*After modifications, you can go to **Smart Family Browser** and all families will be updated. No need to do any synchronization!*

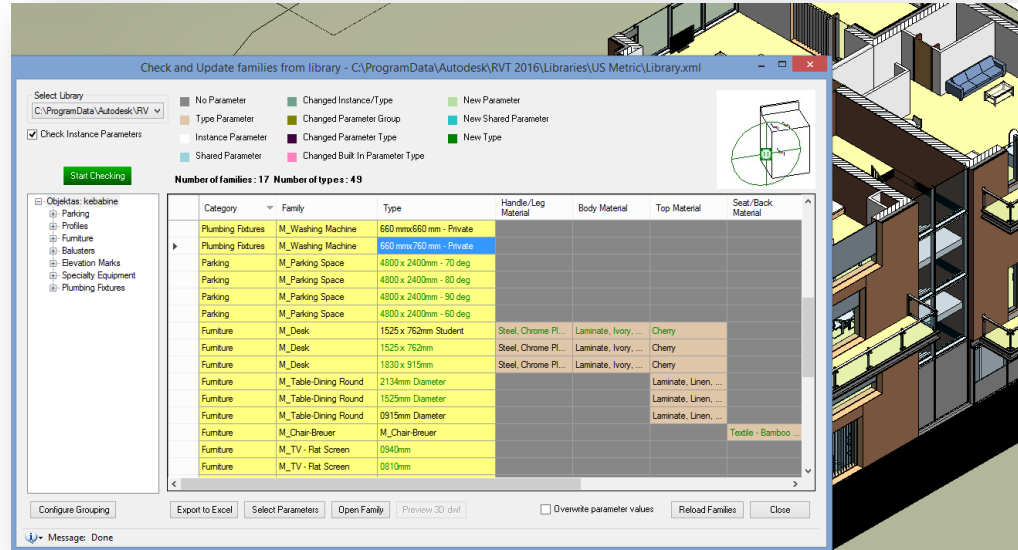
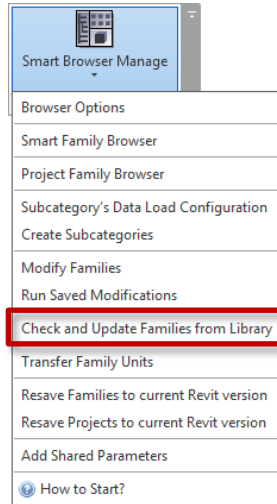
After pressing OK, the tool will open every family and do all modifications that were predefined with **Modify Families**:



Check and Update Families from Library

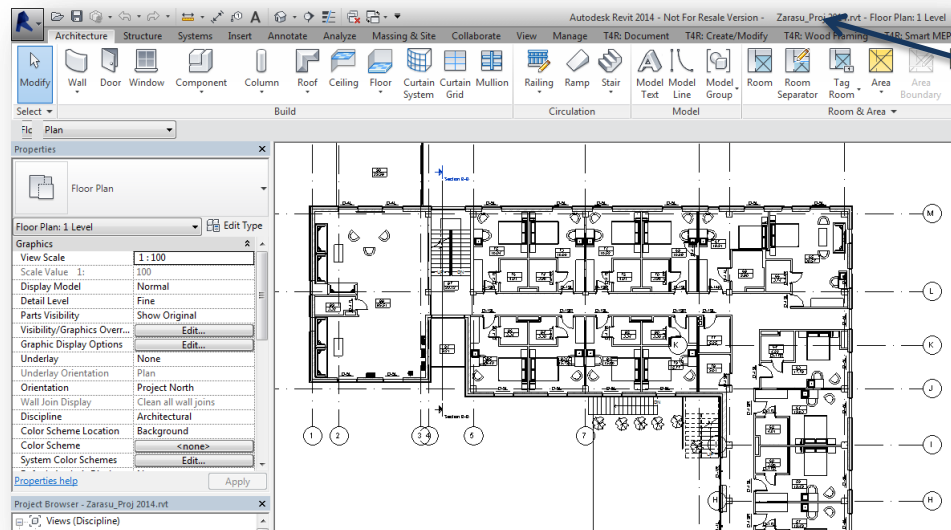
Check and Update Families from Library

Finds the difference between project families and families from the library. Your project will always be up-to-date!

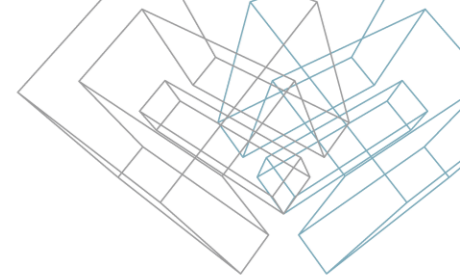


Check and Update Families from Library

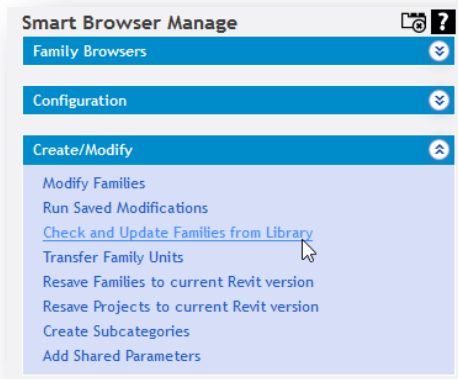
Step 1 – Open the project that has to be updated.



Check and Update Families from Library

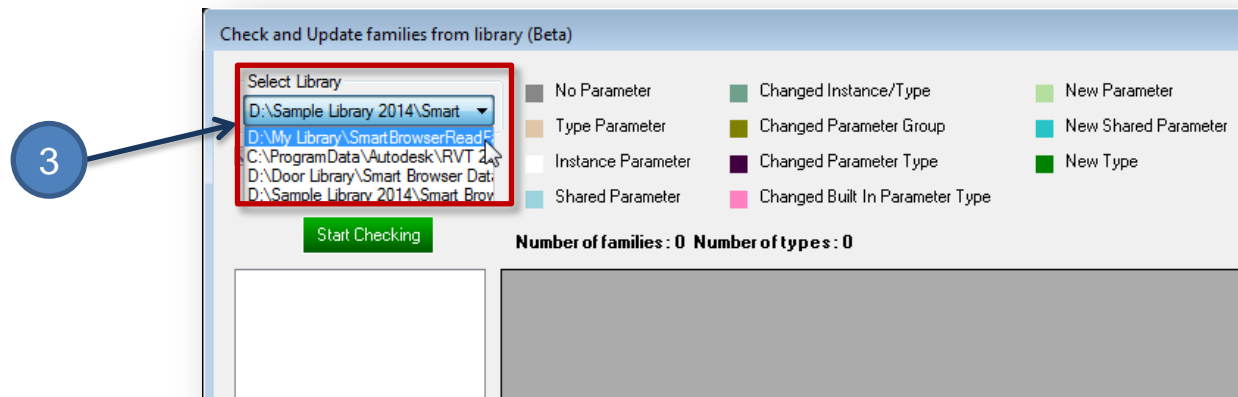


Step 2 – Smart Browser Manage → Check and Update Families from Library.



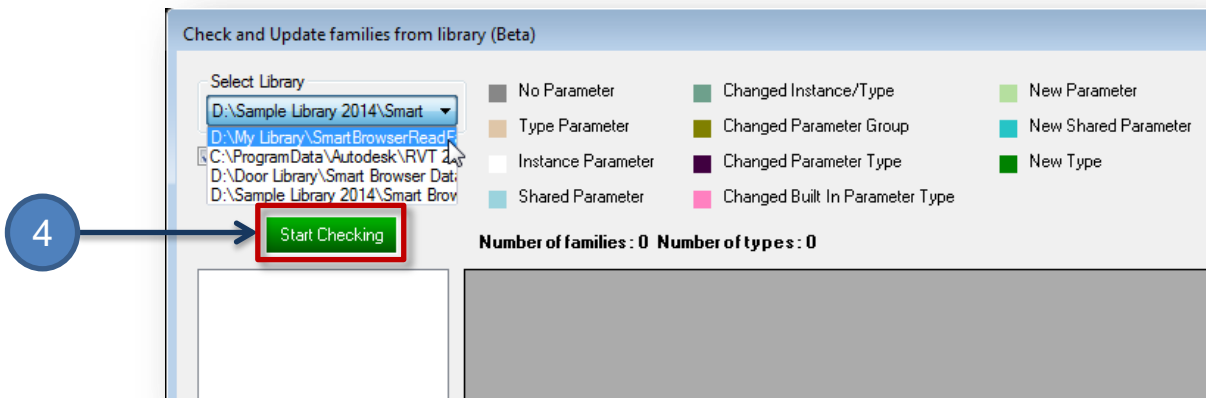
Check and Update Families from Library

Step 3 – Select the library. (The library can be defined through **Browser Options**.)



Check and Update Families from Library

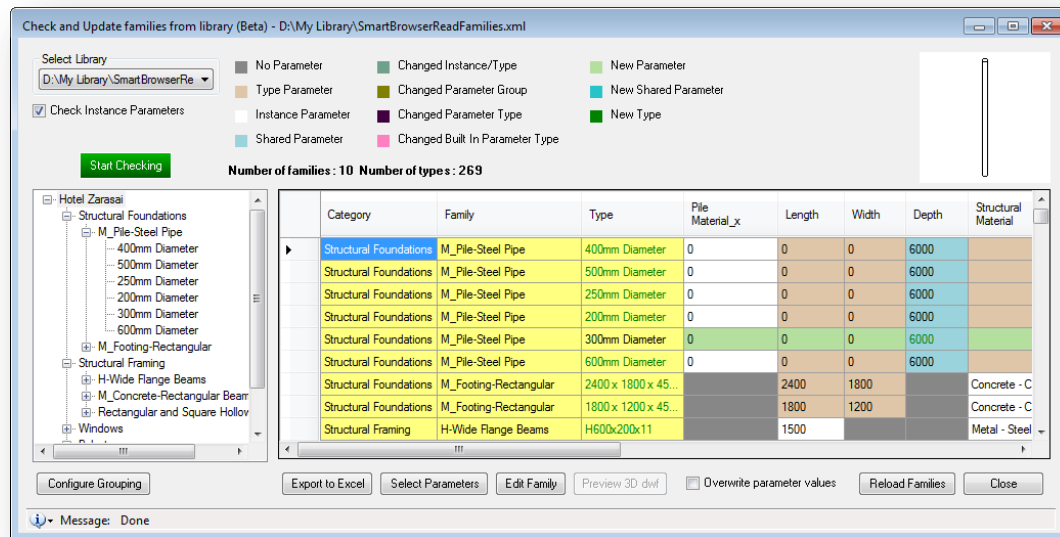
Step 4 – Click Start Checking



Step 5 – Wait for the results. Checking time depends on the number of elements in the project and library.

Check and Update Families from Library

Step 6 – Review the results. The updated families (rows) and parameters (columns) will be displayed with different colors in cells.



Check and Update Families from Library

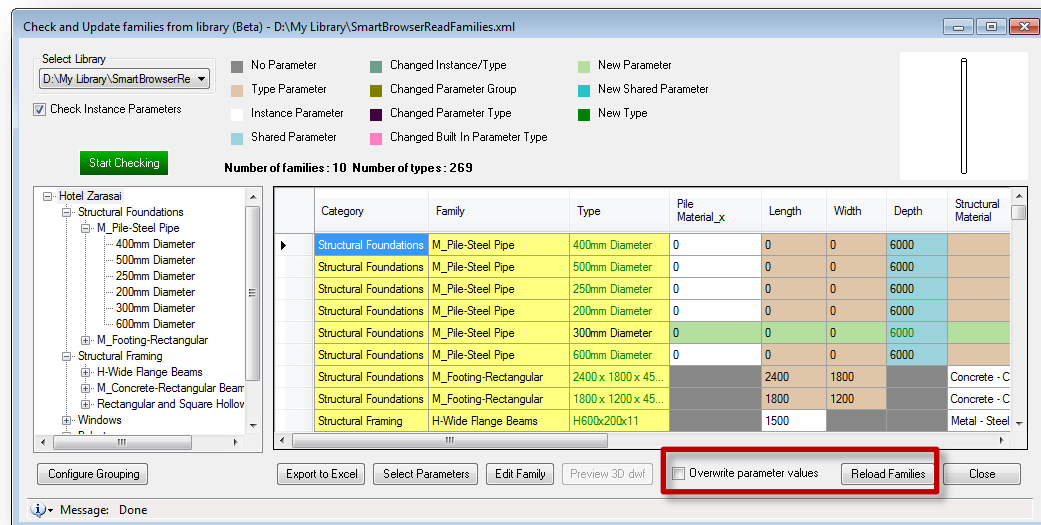
Some cells may be displayed with two colors, for example, in cases where a family parameter type and group were modified:

No Parameter	Changed Instance/Type	New Parameter
Type Parameter	Changed Parameter Group	New Shared Parameter
Instance Parameter	Changed Parameter Type	New Type
Shared Parameter	Changed Built In Parameter Type	

	Type	Width	Structural Material	Pile Material_x	Length	End Extension	Work Plane-Based	Start Extensio
▶	200mm Diameter	0		0	0		<input type="checkbox"/>	
	300mm Diameter	0		0	0		<input type="checkbox"/>	
	600mm Diameter	0		0	0		<input type="checkbox"/>	
	H600x200x11		Metal - Steel - 34...		1500	-12	<input type="checkbox"/>	-12
	H300x305x15		Metal - Steel - 34...		1500	-12	<input type="checkbox"/>	-12
	H350x175x7		Metal - Steel - 34...		1500	-12	<input type="checkbox"/>	-12
	H198x99x4.5		Metal - Steel - 34...		1500	-12	<input type="checkbox"/>	-12
	H300x150x6.5		Metal - Steel - 34...		1500	-12	<input type="checkbox"/>	-12
	H250x125x6		Metal - Steel - 34...		1500	-12	<input type="checkbox"/>	-12

Check and Update Families from Library

Step 7 – Reload families to the current project. There is an option to overwrite parameter values if needed.

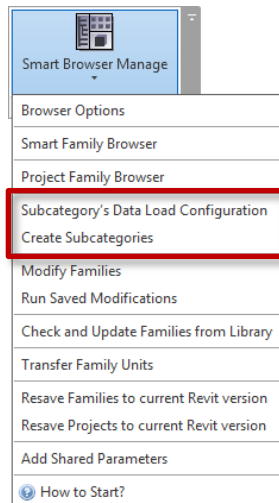




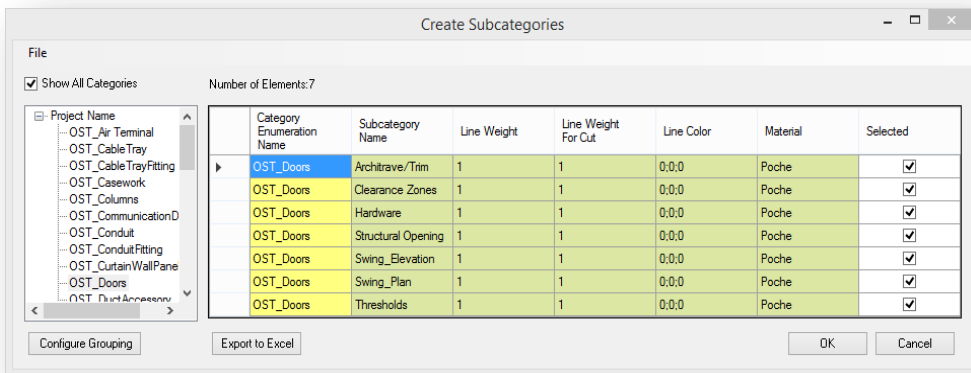
Create Subcategories

Create Subcategories

Create Subcategories – creates subcategories in an open family. The list of subcategories comes from an external text file, which can be easily modified in accordance with company or country standards. The default list of subcategories comes from ANZRS!

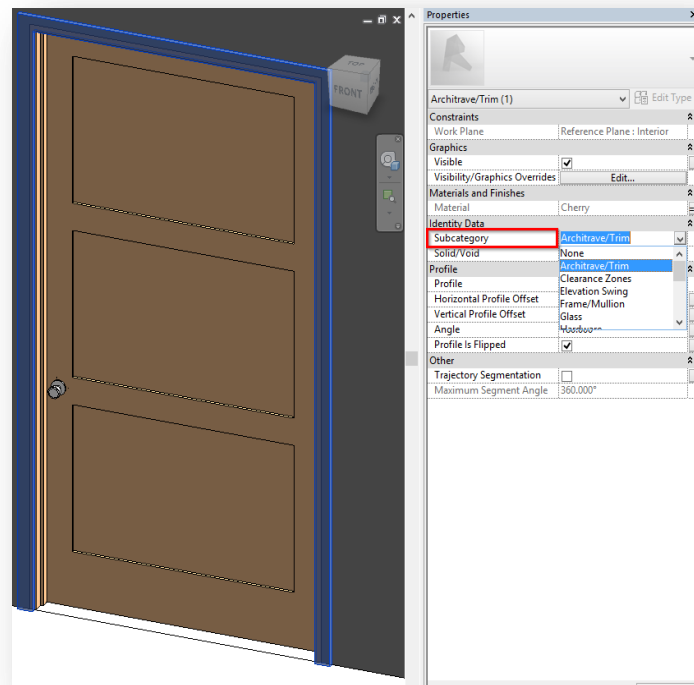


Here you can select the subcategories from the list:



Create Subcategories

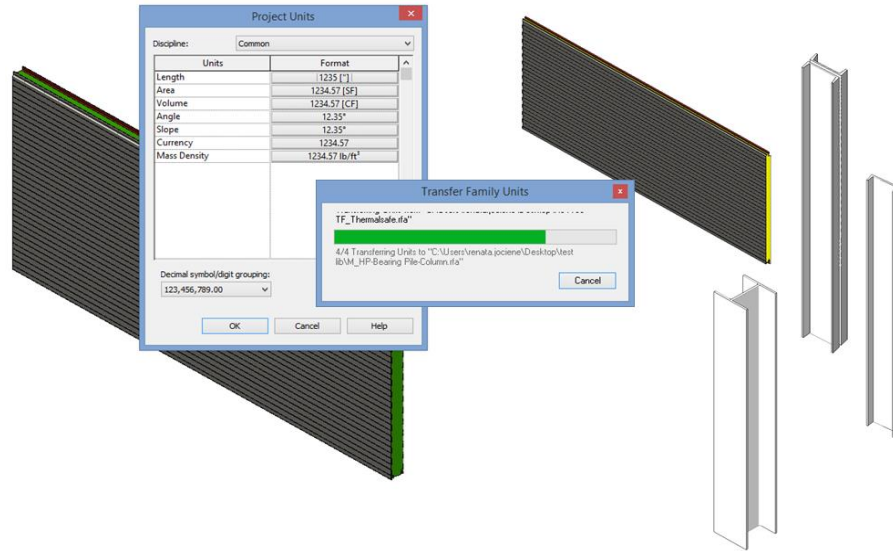
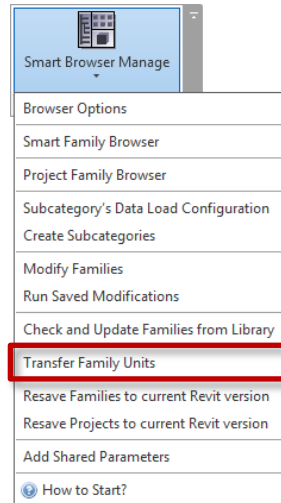
After pressing OK, the family will have a list of subcategories, which can easily be assigned to solids:



Transfer Family Units

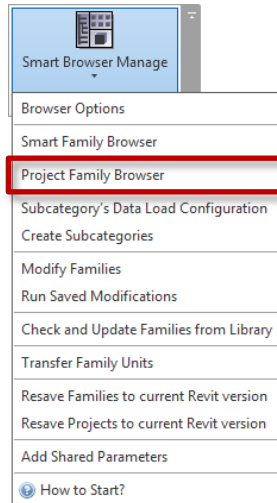
Transfer Family Units

Use “Transfer Family Units” to transfer units from one template family to other selected families. This saves lots of time when standardizing families in the library.



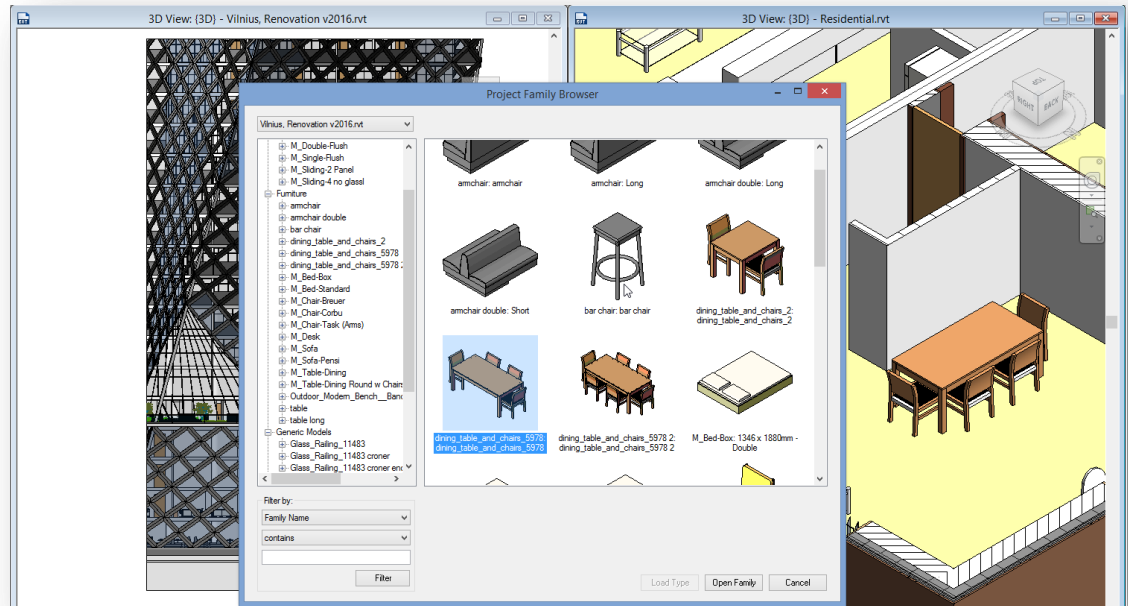
Project Family Browser

Project Family Browser



Project Family Browser – opens the browser with families from the current project.

The convenient dialog allows you to filter and find elements. Use **drag-and-drop** to insert something into the model.

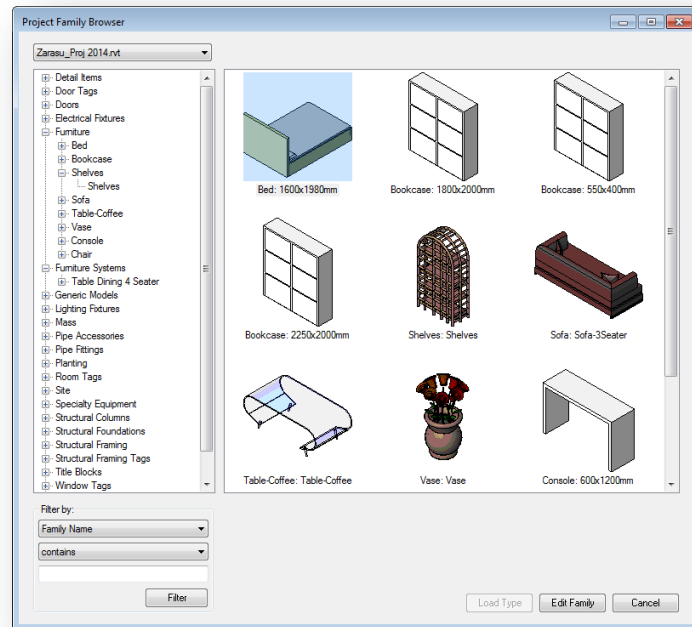


Project Family Browser

Filter by – choose to filter elements by family name or family type.

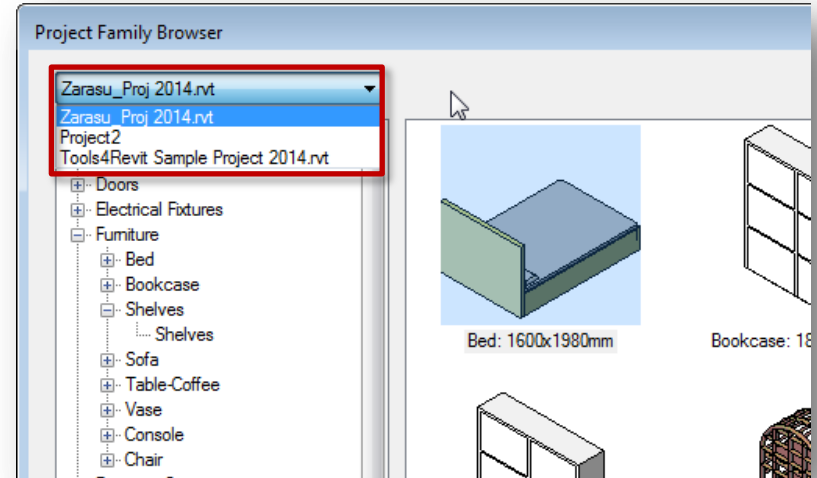
Edit Family – opens selected family in editing mode.

Browser works like external application, so you don't need to close it.



Project Family Browser

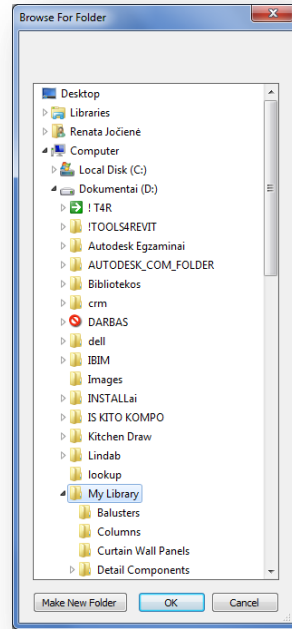
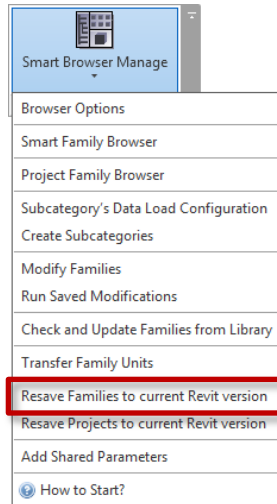
Project Family Browser allows you to switch between open projects. It even gives the option of transferring families from one project to the other.



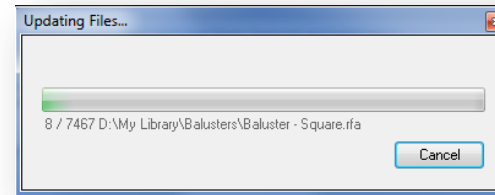


Resave Families to current Revit version

Resave Families to current Revit version



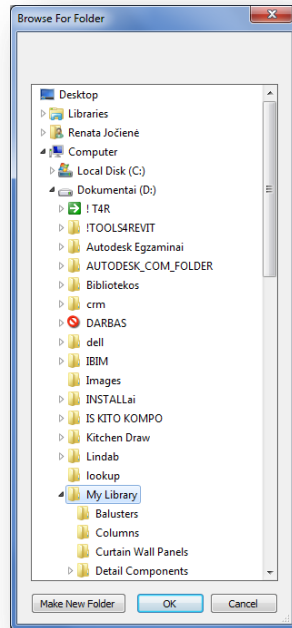
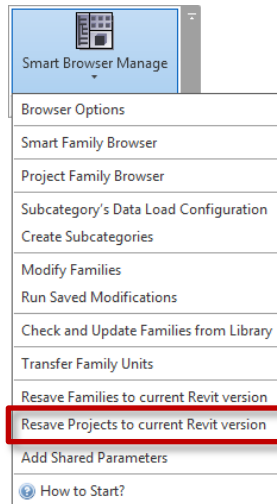
Resave Families to current Revit version – resaves families to the current Revit version from selected catalogue and deletes backup files if necessary.





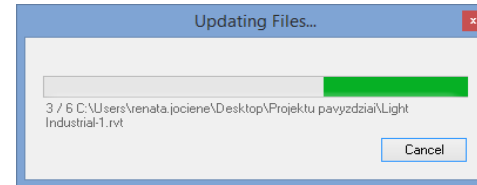
Resave Projects to current Revit version

Resave Projects to current Revit version



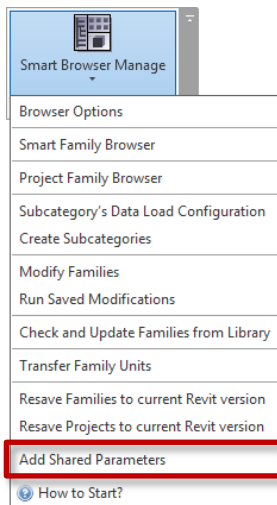
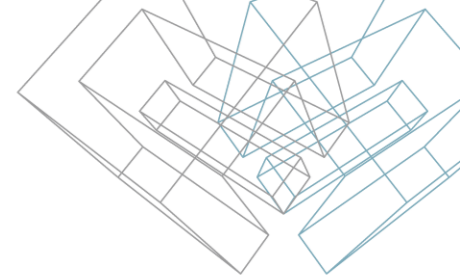
Resave Projects to current Revit version – upgrades selected projects to the current Revit version.

Simply select the folder with projects and all of them will be updated. Also, the backup files may be deleted automatically.



Add Shared Parameters

Add Shared Parameters



Create Shared Parameters – creates shared parameters for selected category in the project.

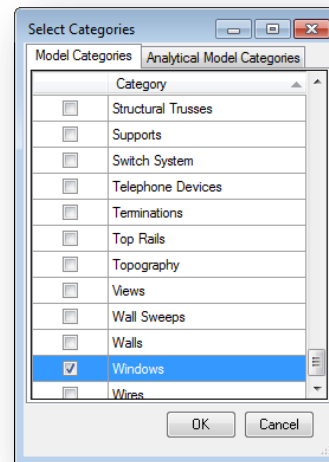
With Revit, you need to create shared parameters one by one. The “Create Shared Parameters” function, however, allows you to create them much more quickly.

Add Shared Parameters

Step 1 – Open project in which you need to create parameters.

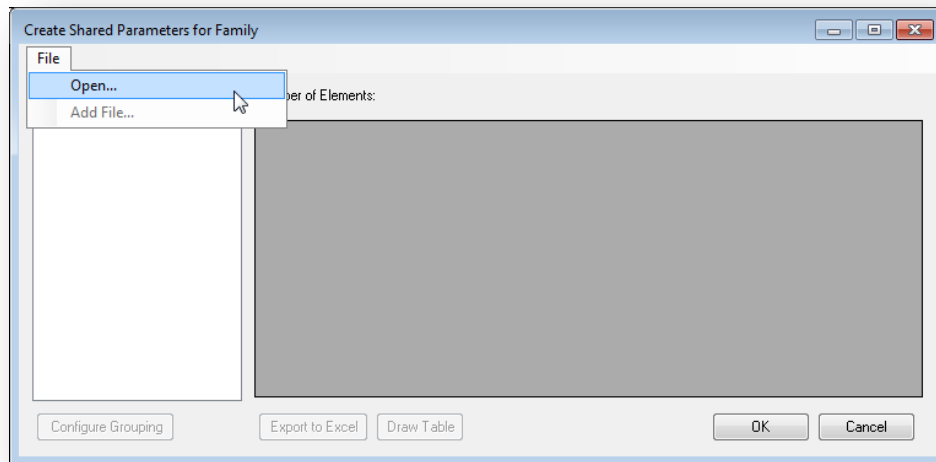
Step 2 – Smart Browser Manage → Create Shared Parameters.

Step 3 – Select the category. The list of categories comes from the project:



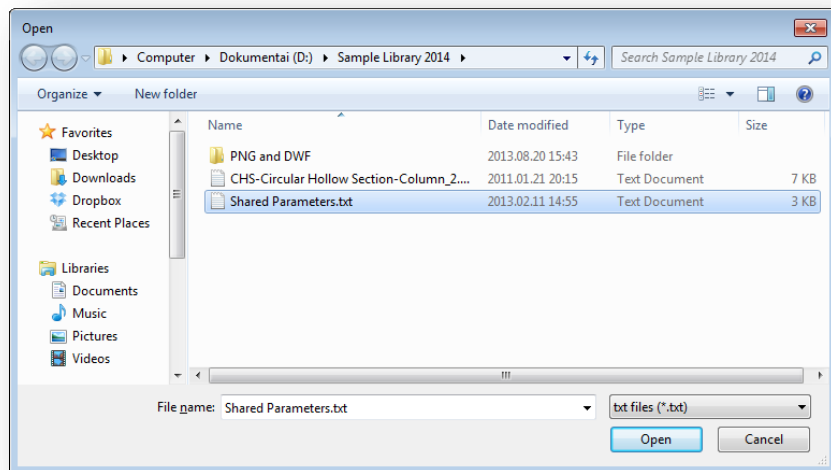
Add Shared Parameters

Step 4 – Open the shared parameter file:



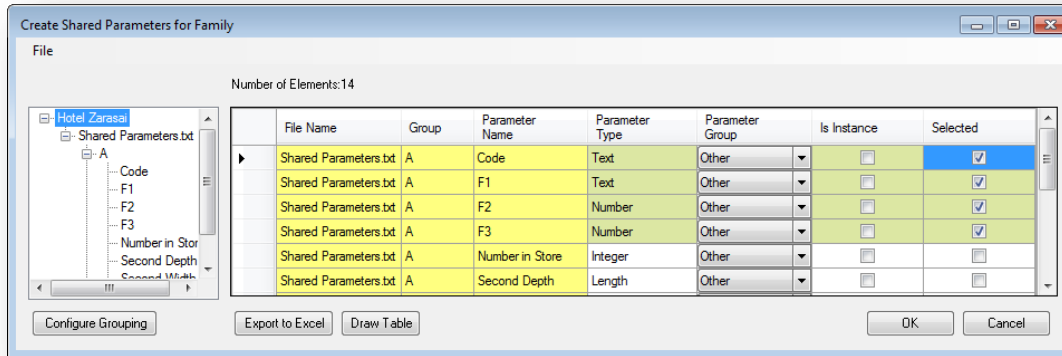
Add Shared Parameters

Step 5 – Select the shared parameter file:



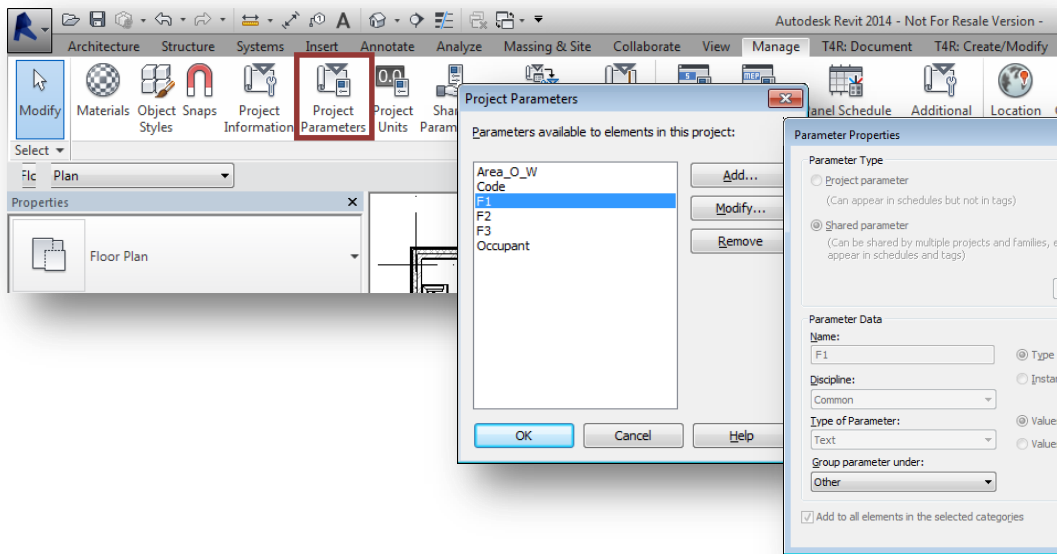
Add Shared Parameters

Step 6 – Select the shared parameters and their properties:

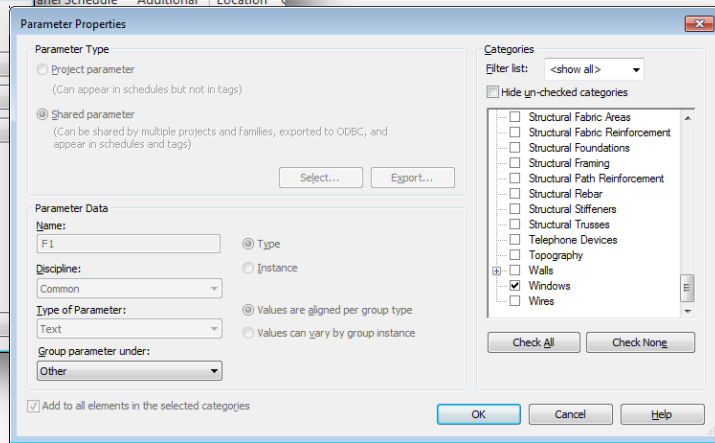


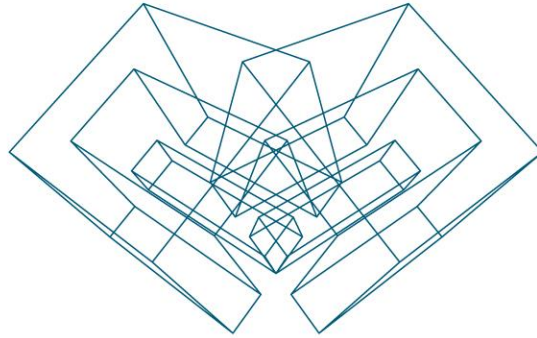
Add Shared Parameters

Result can be found under **Manage** → **Project Parameters**:



Four parameters are automatically created for the windows category. Parameters are shared, so they can be used for tags and schedules.





ENJOY WORKING WITH OUR PRODUCTS!

AGA CAD Ltd

T: +370 618 55671 | E: support@aga-cad.com | W: www.aga-cad.com