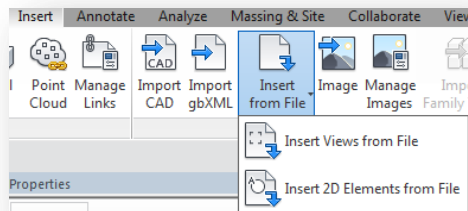


The background is a photograph of an empty parking garage with concrete pillars and beams, tinted in a deep blue. Overlaid on the right side is a complex 3D geometric structure. It consists of several interconnected wireframe boxes and solid, semi-transparent blue blocks that appear to be floating or assembled in a dynamic, non-orthogonal arrangement. The lighting is dramatic, with highlights on the surfaces of the 3D shapes and the floor.

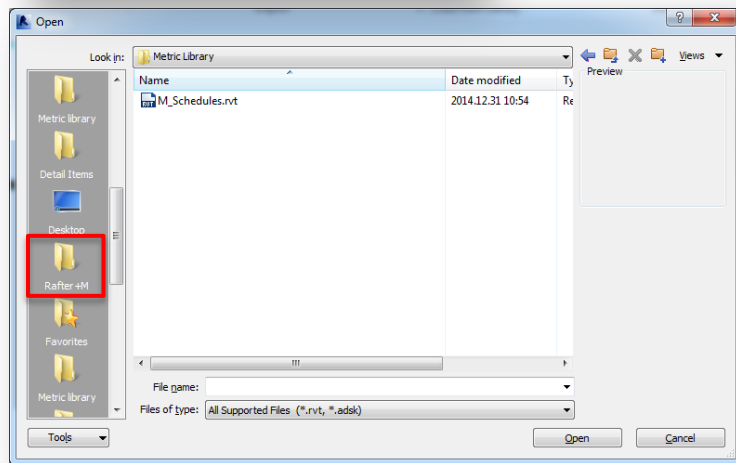
METAL FRAMING RAFTER+

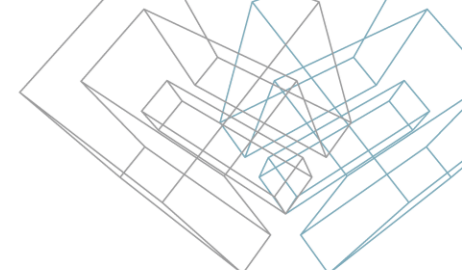
Scheduling and Sorting

Framing Member Schedules



- Rafter+M software installation includes some types of schedule views for roof framing members scheduling. You can find them in Metric (Imperial) Library Rafter+M folder.
- Schedules are loaded automatically to your project after you use the command **Load Families**.
- Other option you have is to use the **Insert from file...views** command to insert schedules to a project or template.





Main Schedule

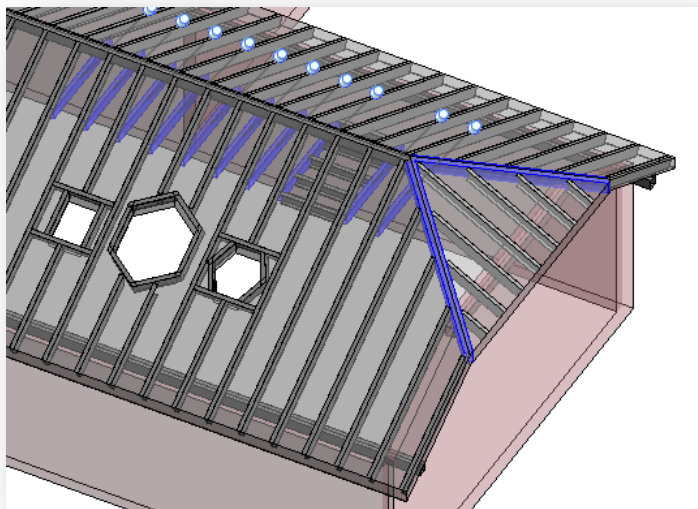
“Framing Member-Mark Definitions”

- This schedule includes a number of predefined shared parameters which are assigned to framing members. Schedule helps to define marking symbols to Sort and Mark procedures of framing members. A user has an option to define the same or different mark symbols (Framing Member Mark) to Frame Members. For example, the user can use the same or different marking for hip and valley jacks.
- The user can edit default values of shared parameters – ‘Framing Member Description’ or ‘Framing Member Mark’ and use these parameters later to sort and describe framing members in other schedules and tagging.

<Framing Member - Mark Definitions>			
A	B	C	D
Framing Member	Framing Member Type	Framing Member Description	Framing Member Mark
Collar Beam	Beam	Stub Joist	SJ
Common Rafter	Rafter	Rafter	R
Double Collar Beam	Beam	Collar Beam	CB
Double Collar Beam	Rafter	Hip Rafter	HR
Double Collar Beam	Beam	Stub Joist	SJ
Ridge Board	Rafter	Hip Rafter	HR

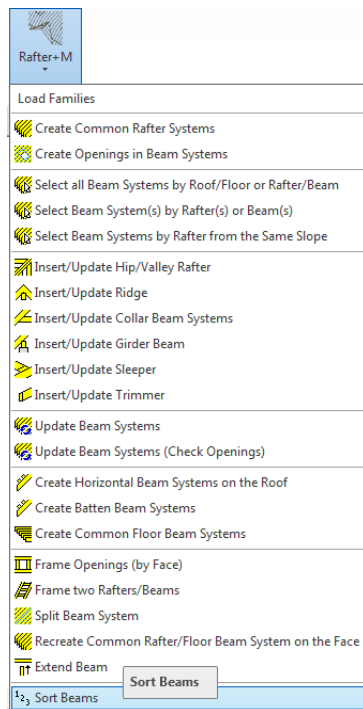
Framing Member-Mark Definitions

The user can use schedules to search and filter different framing members and elements. After selecting a field in the schedule table, all needed objects will be selected and shown automatically.



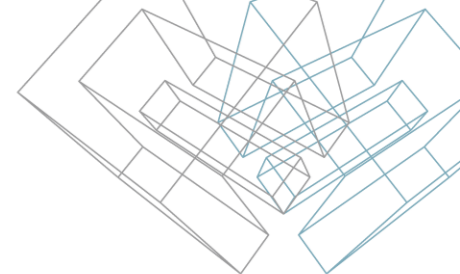
<Framing Member - Mark Definitions>			
A	B	C	D
Framing Member	Framing Member Type	Framing Member Description	Framing Member Mark
Stub Joist	Beam	Stub Joist	SJ
Batten	Beam	Batten	BB
Collar Beam	Beam	Collar Beam	CB
Collar Beam	Beam	Stub Joist	SJ
Hip Rafter	Rafter	Hip Rafter	HR
Purlin	Beam	Beam	B

Function “Sort Beams”



- After editing Description and Mark fields the user can run the **Sort Beams** function. It writes results in shared parameter “FM SortMark”.
- All framing members will be grouped by Framing Member Mark and sorted (numbered) by geometrical parameters.

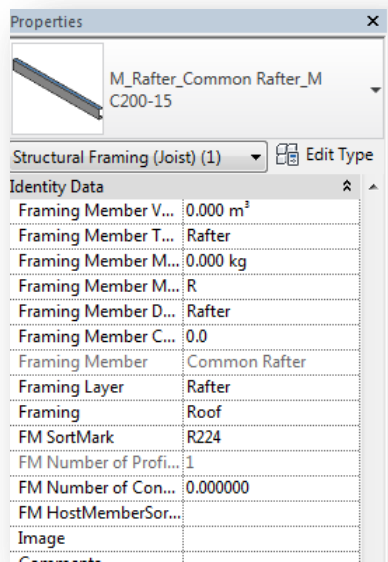
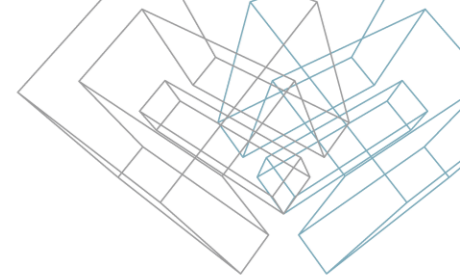
Other Schedules



<Framing Member Schedule>					
A	B	C	D	E	F
Framing Member	Framing Member	FM SortMark	Cut Length	Count	Volume
Collar Beam					
Collar Beam	Beam	SJ1	15267	3	0.14 m³
Collar Beam: 3			15267		0.14 m³
Common Rafter					
Common Rafter	Rafter		321014	115	3.21 m³
Common Rafter: 115			321014		3.21 m³
Double Collar Beam					
Double Collar Beam	Beam		31177	9	0.56 m³
Double Collar Beam	Rafter		73634	14	0.96 m³
Double Collar Beam: 23			104811		1.52 m³
Ridge Board					
Ridge Board	Rafter	HR11	7035	1	0.16 m³
Ridge Board: 1			7035		0.16 m³
Grand total: 142			448127		5.03 m³

- Software installation includes other examples of schedule views. The user can edit properties of schedules if needed and use them in the project.

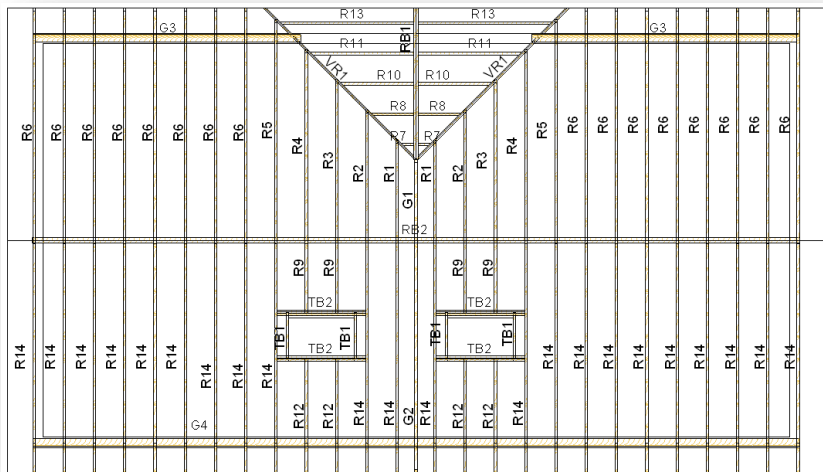
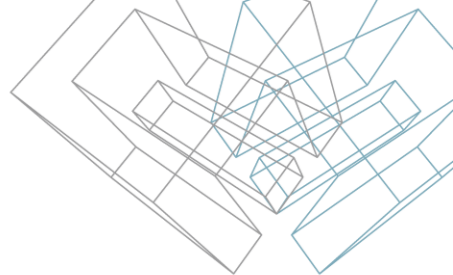
Tagging



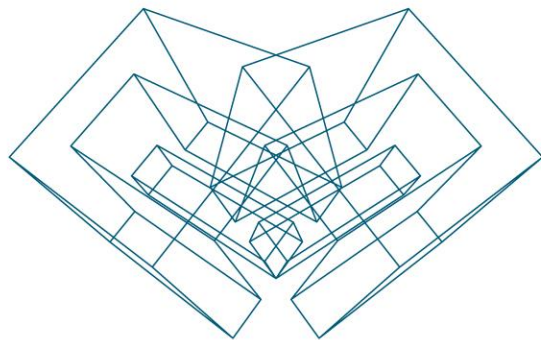
- +..... M_Level Head - No Bubble
- +..... M_Material Tag
- +..... M_North Arrow-1
- +..... M_Path Reinforcement Symbol
- +..... M_Path Reinforcement Tag
- +..... **M_Rafter_Framing Member Sort Mark Tag**
- +..... M_Rebar Tag
- +..... M_Revision Tag
- +..... M_Section Head - Filled
- +..... M_Section Head - No Arrow

- The user can tag all framing members very quickly using the 'M_Rafter_Framing Member Sort Mark Tag'.
- Every member will be tagged as it's assigned in the schedule "Framing Member-Mark Definitions" and the original number will be given according to member length.

Tagging



If you don't have M_Rafter_Framing Member Sort Mark Tag in your project or template, load it using the command **Load Family**. You can find it in Metric (Imperial) Library Rafter+M folder.



AGA CAD Ltd

T: +370 618 55671 | E: support@aga-cad.com | W: www.aga-cad.com