

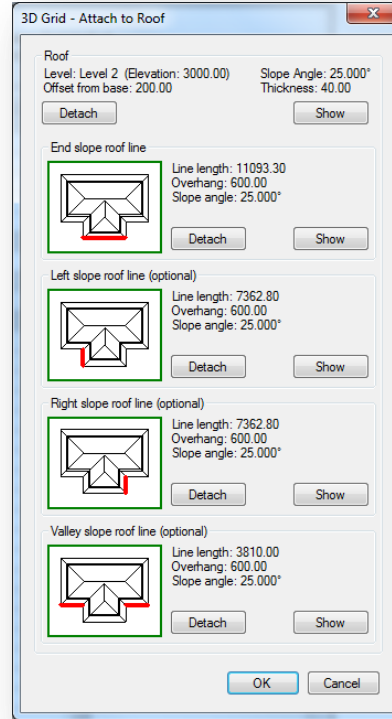
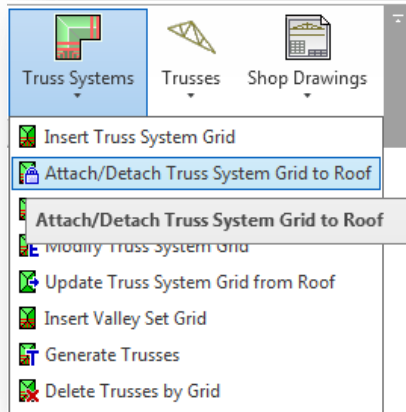


METAL FRAMING TRUSS+

Attach/Detach Truss System Grid to Roof

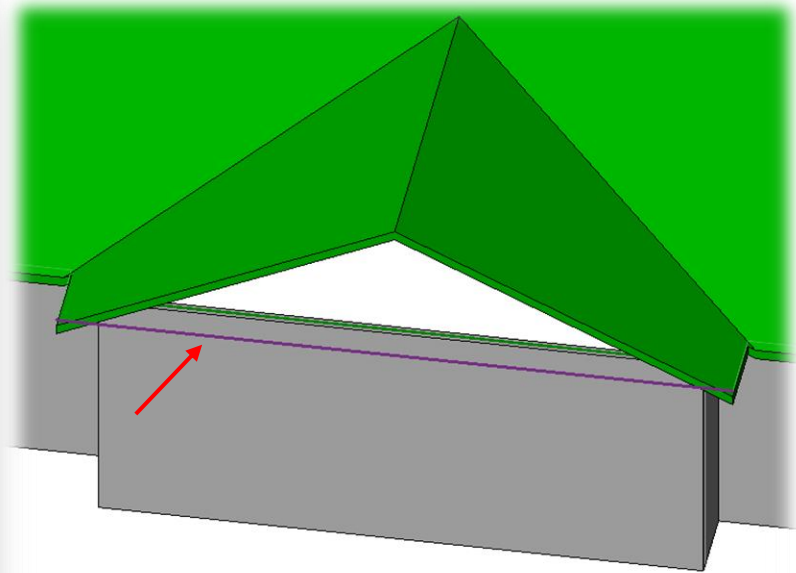
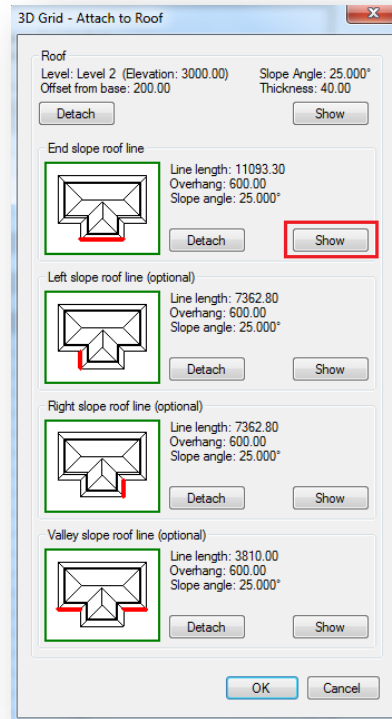
Attach/Detach Truss System Grid to Roof

- Select a truss system grid.
- Choose *Attach/Detach truss system grid to roof* directly from “Truss+” menu.



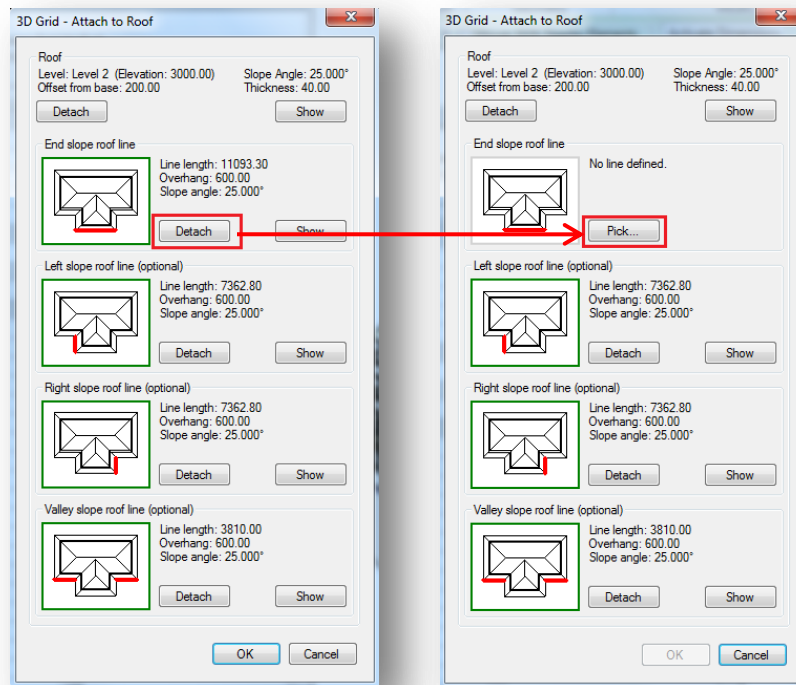
Attach/Detach Truss System Grid to Roof

- To see which roof line was selected, click **Show**.



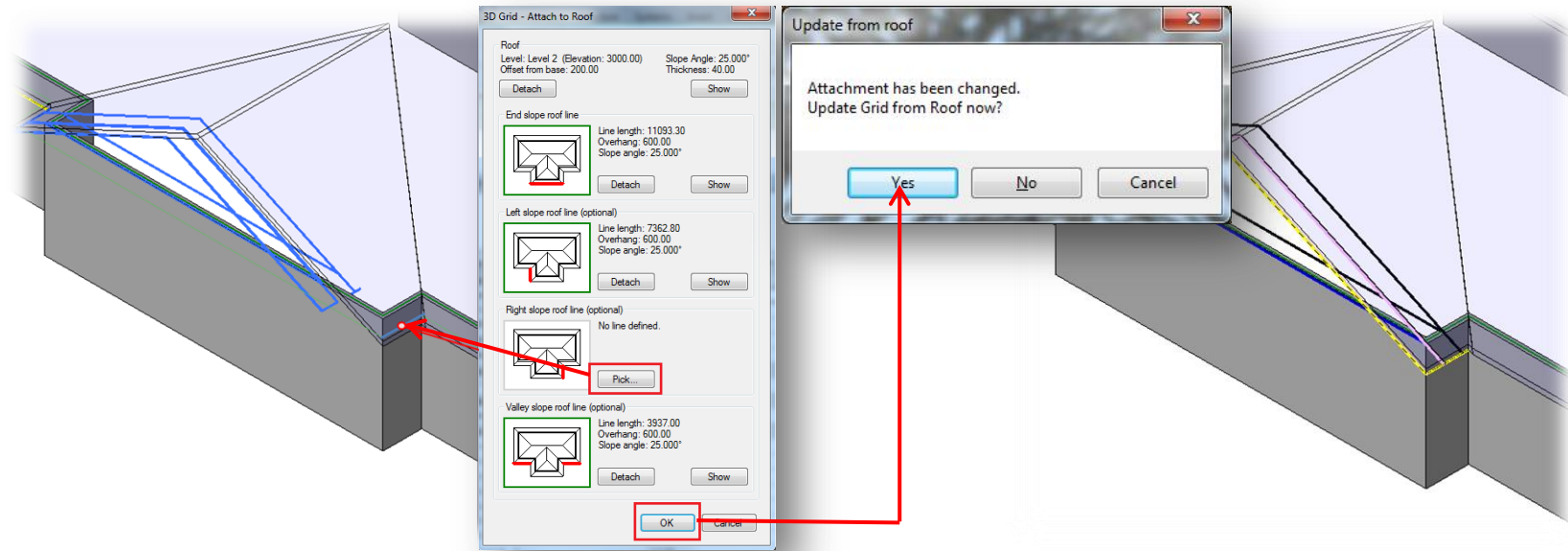
Attach/Detach Truss System Grid to Roof

- Choose *Detach* to detach the line and re-pick a new one if needed.



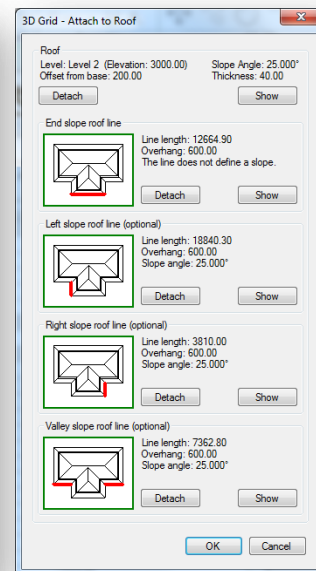
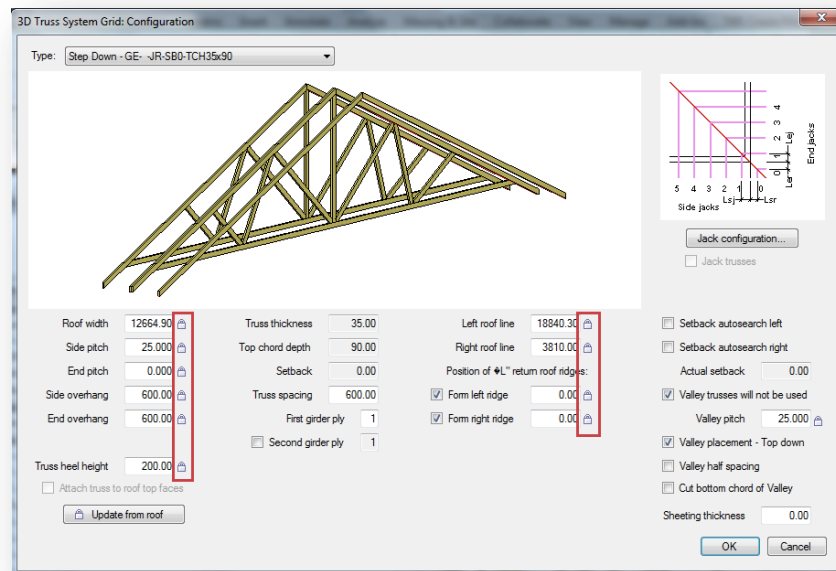
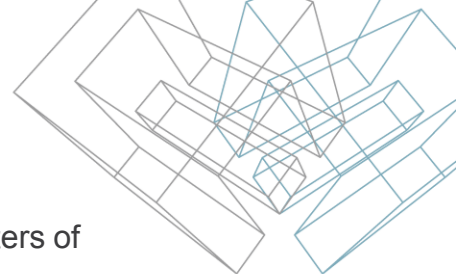
Attach/Detach Truss System Grid to Roof

- After modifications were made, choose **Yes** if you want to update the truss system grid geometry from the roof.



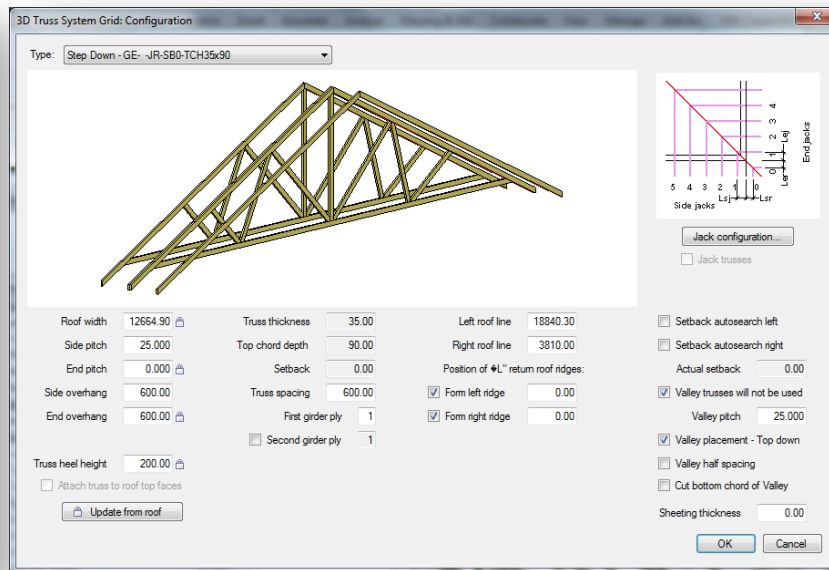
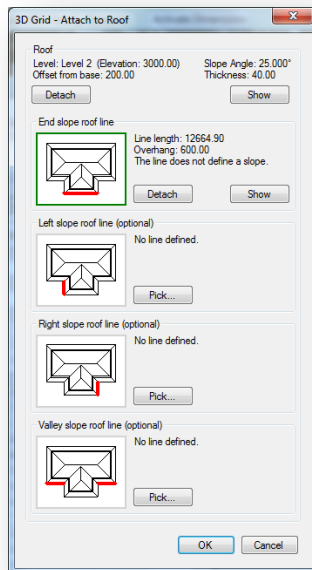
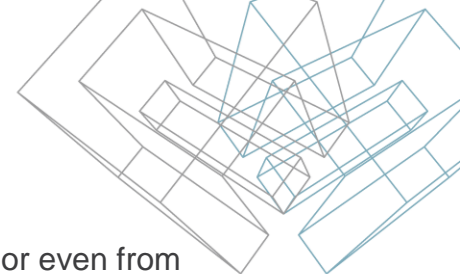
Attach/Detach Truss System Grid to Roof

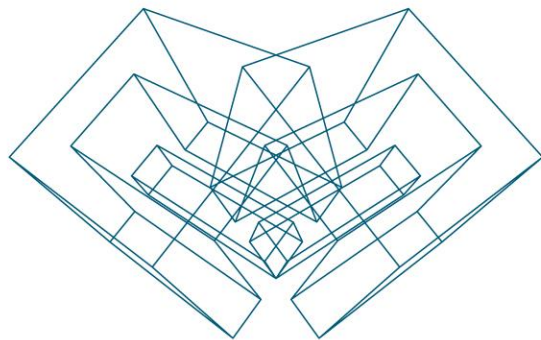
- There are situations, when picking of roof lines is inconvenient and it's better to enter parameters of a roof geometry manually.
- If parameters of the truss system grid are attached to the roof, they will be locked.
- After the grid updating from the roof, attached (locked) parameters will be updated automatically.



Attach/Detach Truss System Grid to Roof

- To enter parameters manually, you must detach the truss system grid from some of roof lines or even from all roof (in case you want to enter all parameters manually).
- The *Update from roof* function will not update detached parameters in this case.





AGA CAD Ltd

T: +370 618 55671 | E: support@aga-cad.com | W: www.aga-cad.com