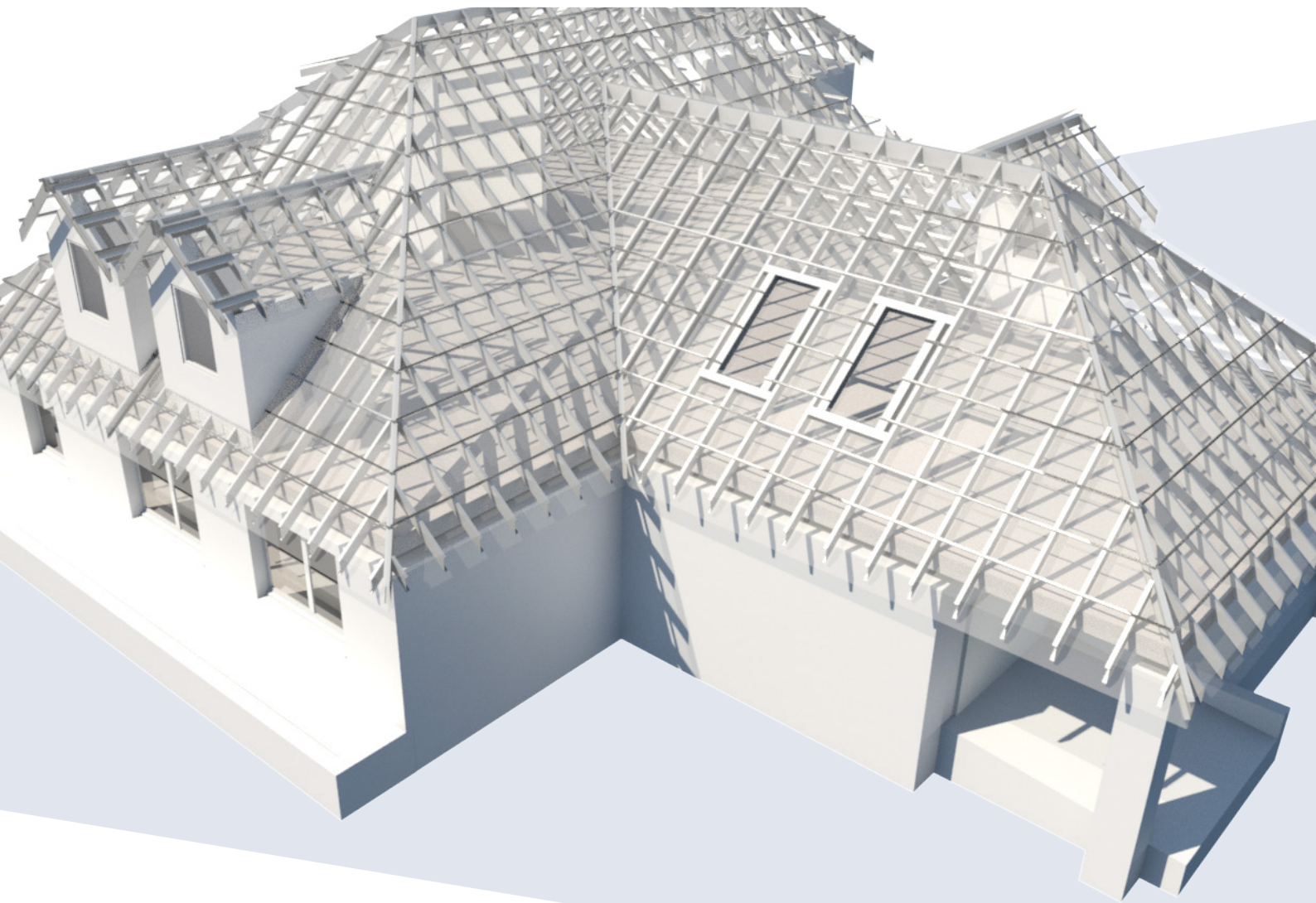


BUILDING BIM TOGETHER

[www.aga-cad.com](http://www.aga-cad.com)



## **METAL FRAMING**

THE ONLY TRUE BIM SOFTWARE FOR TOTAL-PRECISION  
FRAMING OF METAL CONSTRUCTIONS IN REVIT®

### **DESIGN – ANALYSIS – DOCUMENTATION – FABRICATION – CONSTRUCTION**

- Flexible multilayer framing (incl. sheathing) of any building configuration
- Automated clash detection and generation of complete shop drawings
- Constructable BIM models, optional CNC output & more



Leverage the full potential of Revit® and the insights of global BIM experts to automate light gauge steel framing work for projects of all kinds.

- Perfect for both – residential and multi-story houses
- Instantly create multilayer framing systems using fully customizable rules and templates
- Easily control all framing members, including connections, details, and more
- Freely revise your model knowing framing elements will update and adapt
- Detect clashes; combine with Cut Opening to create openings and frame them
- Meet your specific needs with versatile functions and total parameter control
- One-click generation of shop drawings and cut lists; get real-time take-offs and views, automatic sorting, and dimensioning
- Optional export to any CNC machines for fabrication of framing elements
- Perform structural analyses without leaving Revit®, or export your metal frames to external analysis software at any stage of design process

Ideal for architects,  
structural engineers,  
and manufacturers  
of lightweight metal  
frame constructions.



Lengthy steps automated and/or eliminated.



**EARN MORE**  
Profit boosted by faster work, better decisions.



Optimized CNC and label files produced with ease.



Best practices built-in to meet any need or norm.



**Deliverables on-time, accurate and ready to use.**

Greater efficiency, bigger BIM benefits and ease of customization in:  
**DESIGN - ANALYSIS - DOCUMENTATION - FABRICATION - CONSTRUCTION**

*"AGA CAD's framing solutions are simple to use and can be very helpful. They save a lot of time creating framing plans with immediate generation of take-offs."*  
Francisco Contreras Chaves, CEO and Architect, CINCO (Chile)

*"Raft+ and Truss+ are pretty much perfect for my needs; they quite quickly frame the whole roof. That's very good indeed. The tools are robust and don't cause any problems in Revit itself."*

Ian Kidston, Owner, All Extension Design Service (Australia)

*"This software saves me 10% to 40% of my working time, depending on the model's complexity. These are the most useful Revit extensions I've seen. Others that I've tried didn't help much."*  
Heiner Dillmann, Owner, Müller & Neumeister (South Africa)

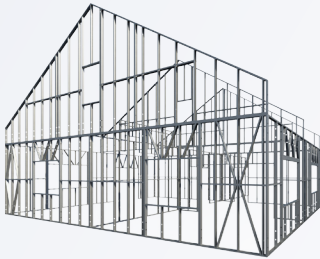
*"The Metal Framing Truss+ add-on allows us to be more accurate in our work, while utilizing the same truss modeling capabilities of Wood Framing Truss+ RT. Wood Framing Truss+ RT allows us to model almost any type of truss, any configuration. It's intuitive and innovative and has saved us quite a bit of time, especially in the revising and updating of roofs. Overall, AGACAD's Wood & Metal Framing Suite is a great solution for anyone working in Revit who is looking for a more comprehensive, efficient and intuitive system for modeling roof structures. It has given substance to our models, which is extremely beneficial to our clients."*

George Aslanidis, Senior CAD & BIM Technician for Structural Engineering at Thorson Baker + Associates, Inc. (TBA) (United States, Puerto Rico, Canada)

"The most powerful and flexible BIM software on the market for metal frame constructions."

## CHOOSE THE FULL SOLUTION SUITE OR SEPARATE MODULES

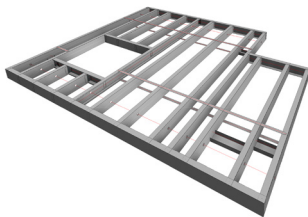
### **METAL FRAMING** WALL+



#### Wall+

- Frame even the most complex multilayer walls using C+C, C+U, and U+U framing systems
- Easily model supporting structure, openings, complex L or T connections, etc.
- Create unique L, T or Free End joins, save them and use in any project
- Distribute details on studs and plates
- Automate sheathing layoutsLink framing/wall types; preset bearing/non-bearing
- Quickly align studs or openings crippled with trusses or other frames and much more

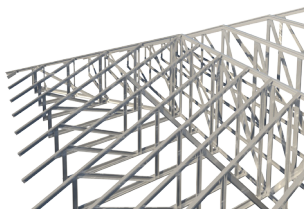
### **METAL FRAMING** FLOOR+



#### Floor+

- Create detailed multilayer light gauge steel framing for irregular floor shapes, including openings
- Easily configure floor metal framing members including battens
- Distribute details on bridgings, blockings, joists and rim joists
- Automate sheathing layouts
- Link framing/floor types; preset bearing/non-bearing
- Align frames across segments, between floors/walls, and much more

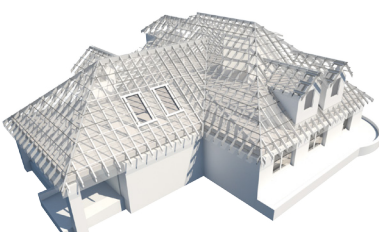
### **METAL FRAMING** TRUSS+ RT



#### Truss+

- Load built in truss families and create new types with Truss builder
- Build full truss systems in one go with 3D grid
- Create unique truss families based on model lines, roofs
- Auto-copy, arrange, auto-update trusses according to your roof
- Automatically cope, sort, and tag truss members

### **METAL FRAMING** RAFTER+



#### Rafter+

- Auto-frame an entire roof based on its 3D model
- Insert rafters, trimmers, sleepers, ridge, girder, hip, valley, collar, horizontal, and batten beams easily
- Detect, frame, and update openings
- Frame, extend, trim, cope beams; manage beam systems





25 YEARS  
DELIVERING TOMORROW'S AEC

### BUILDING BIM TOGETHER

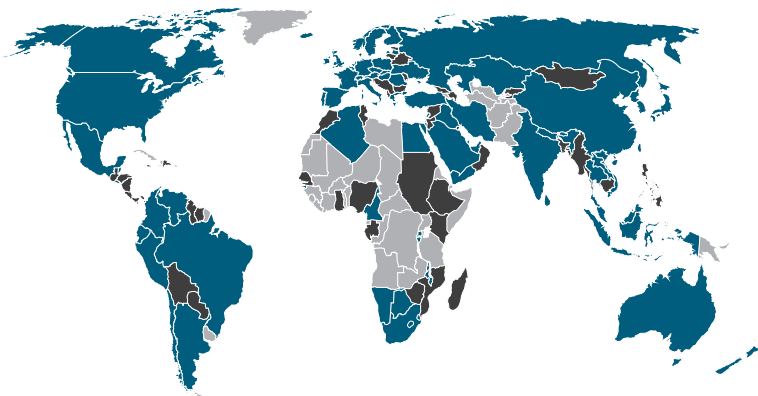
AGACAD is a leading developer of productivity solutions and best practices for Building Information Modelling. We empower you and the AEC industry to more easily secure all the benefits of BIM.

### SHARING BIM ADVANCES

Added functionality in Autodesk® Revit®; Automated modelling and documentation; Project workflow integration; and more.

*We work closely with top BIM practitioners, turning problems they solve and new methods they evolve into Revit-compatible software and add-ons. So that everyone can move ahead.*

This keeps our clients at the cutting edge of BIM processes: to dramatically speed up projects, ensure compliance with standards, deliver better results, and boost profitability.



More than **10,000** clients  
in **130** countries.

### Industries served:

Architecture  
Engineering  
Construction  
Pre-fabrication  
Facility management

### SUPPORTING BIM PROGRESS

Founded in 1988 and based in the EU, we're a long-time European partner of Autodesk®, and an active regional participant in the development of BIM standards and techniques.



AGACAD advanced solutions for Revit®:



- R-Heating
- Smart Hangers
- Smart Diffusers
- Smart Sprinklers

- Floor+
- Wall+
- Truss+ RT
- Rafter+

- Floor+
- Wall+
- Truss+
- Rafter+

- Smart Walls
- Smart Floors
- Smart Details
- Insert Elements
- Sort Mark
- Smart Assemblies



- Excel2R
- Sort Mark
- Dynamic Legend
- Smart Sheets
- Quick Dimensions
- Smart Floors
- Smart Walls
- Sort&Cope
- RAS Manager
- U-Value
- Cut Opening Free
- Smart Browser Free
- Smart Select

START YOUR FREE TRIAL AT [www.aga-cad.com](http://www.aga-cad.com)

CALL OR WRITE TODAY TO GET A QUOTE

T: +370 618 55 671 | E: [info@aga-cad.com](mailto:info@aga-cad.com)