

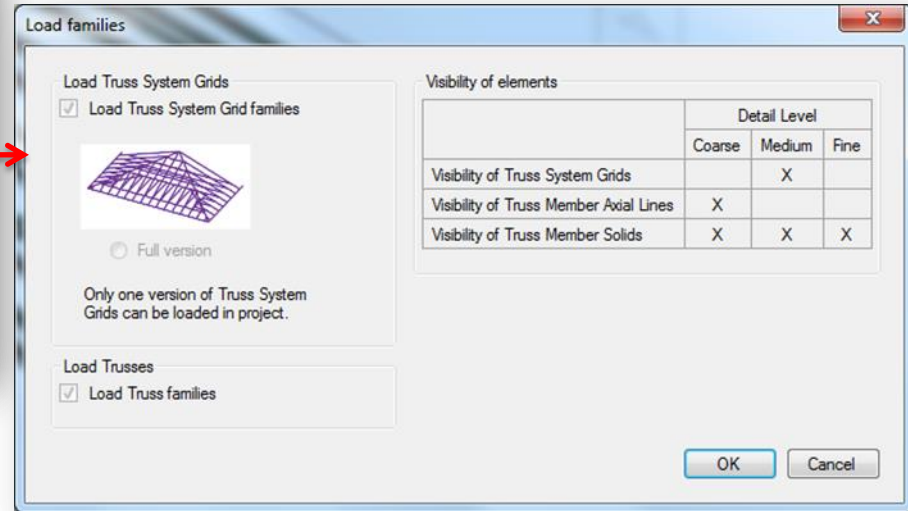
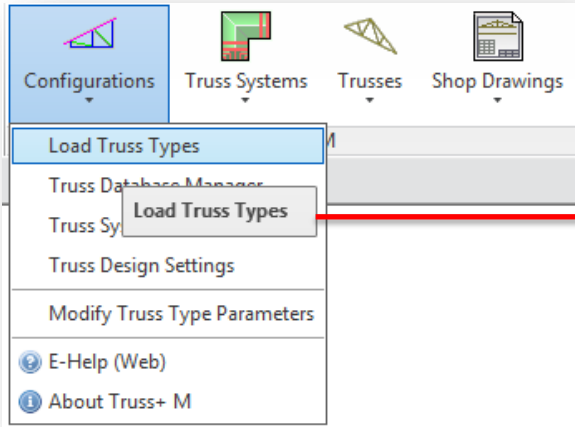


# METAL FRAMING TRUSS+

## Load Truss Types

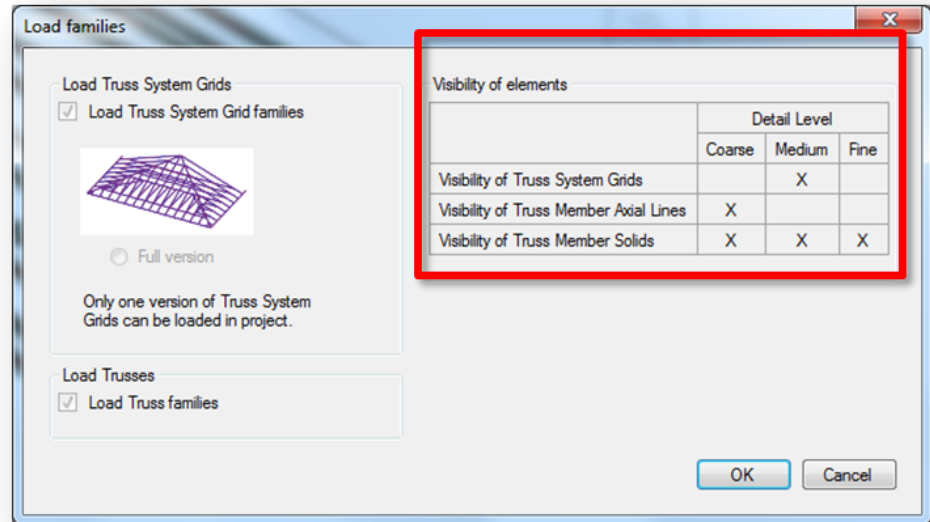
# Loading Truss Types

Choose *Load Truss Types* directly from “Truss+” menu.

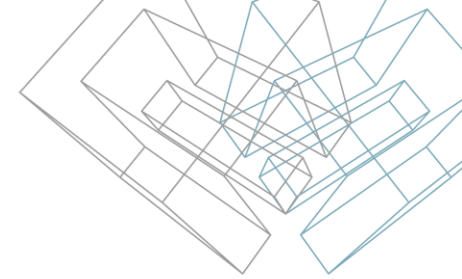


# Load Families – Visibility of Elements

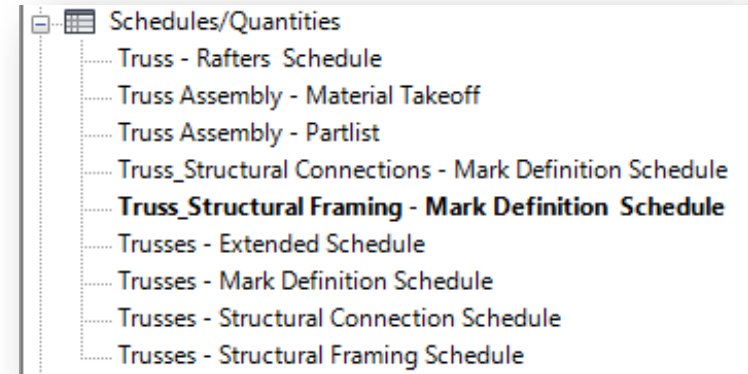
- The command *Load Truss Types* loads truss system grids, structural trusses and other structural framing families into the project.
- To avoid this time-consuming operation, the user can save file as a template after loading families.
- Visibility settings depend on Detail Level.



# Load Families – Schedules



- The command *Load Truss Types* loads sample schedules to the project. Mark Definition Schedules allow to predefine or edit marking of elements at any time.
- Other schedules can be used for scheduling trusses and structural framing elements in standard view and assembly views.
- Those sample schedules can be used as templates for truss assembly schedules.



# The command *Load Truss Types* loads:

- Truss System Grids

- M\_Truss\_Truss System Grid BarnEnd
  - M\_Truss\_Truss System Grid GableEnd
  - M\_Truss\_Truss System Grid HipEnd
  - M\_Truss\_Truss System VS Grid ValleySet

- Nested Structural Framing families of Truss System Grids

- M\_Truss\_TSGrid\_CT\_Grid
  - M\_Truss\_TSGrid\_HET\_Grid
  - M\_Truss\_TSGrid\_HF\_Grid
  - M\_Truss\_TSGrid\_J\_Grid
  - M\_Truss\_TSGrid\_TB\_Grid
  - M\_Truss\_TSGrid\_VT\_Grid

- Structural Trusses

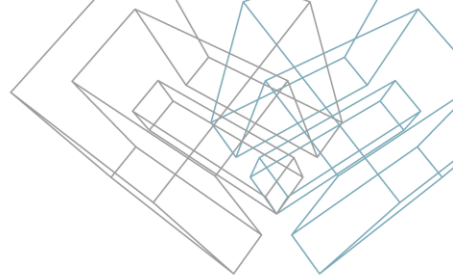
- Structural Trusses
    - M\_Truss\_Common Truss Attic Room 1L+1R
    - M\_Truss\_Common Truss Double Howe&Gambrel\_2L+2R
    - M\_Truss\_Common Truss Double Howe\_1L+1R
    - M\_Truss\_Common Truss Double Pitch&Gambrel Attic\_2L+2R
    - M\_Truss\_Common Truss Double Pitch&Gambrel Rafters\_2L+2R
    - M\_Truss\_Common Truss Howe\_1L+1R
    - M\_Truss\_Common Truss Raised Vault\_2L+2R
    - M\_Truss\_Common Truss Tray Ceiling\_2L+2R
    - M\_Truss\_Corner Girder Truss Mono Howe\_1L
    - M\_Truss\_Gable Truss Common&Gambrel Drop Top\_2L+2R
    - M\_Truss\_Hip End Truss Howe\_1L+1C+1R
    - M\_Truss\_Jack Truss Howe\_1L
    - M\_Truss\_Mono Pitch Truss Double Howe\_1L
    - M\_Truss\_Scissors Truss Double Howe\_1L+1R
    - M\_Truss\_Valley Truss Standard

- Structural Framing families of Truss Webs and Chords.

- M\_Truss\_Metroll Bottom Chord
  - M\_Truss\_Metroll Outlooker
  - M\_Truss\_Metroll Top Chord
  - M\_Truss\_Metroll Web

- Structural Framing families of Rafters

- M\_Truss\_Rafter Howick
  - M\_Truss\_Rafter Howick Side Rafter
  - M\_Truss\_Rafter Howick Truss Rafter

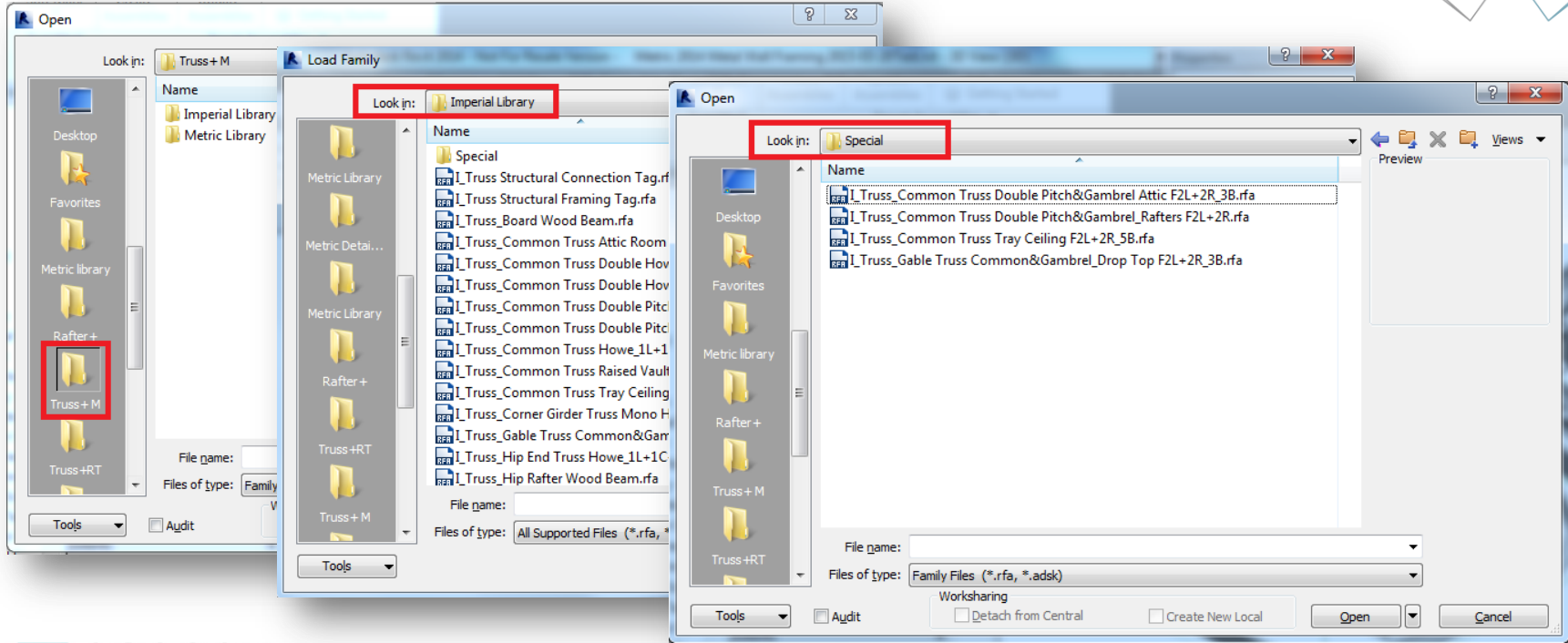


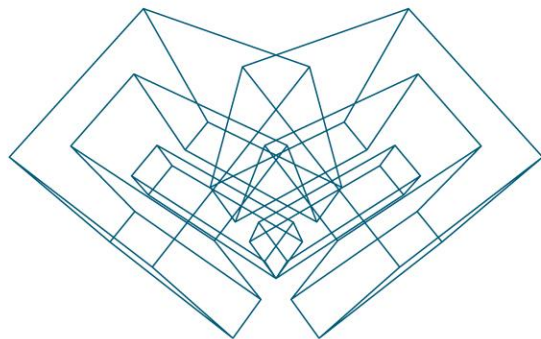
**Note:** Family name begins with “I\_Truss\_” for imperial units and with “M\_Truss\_” for metric units.



# Load Additional Truss Types

- To load additional Truss Types, use **Load Family** command from Revit Menu.





AGA CAD Ltd

T: +370 618 55671 | E: [support@aga-cad.com](mailto:support@aga-cad.com) | W: [www.aga-cad.com](http://www.aga-cad.com)