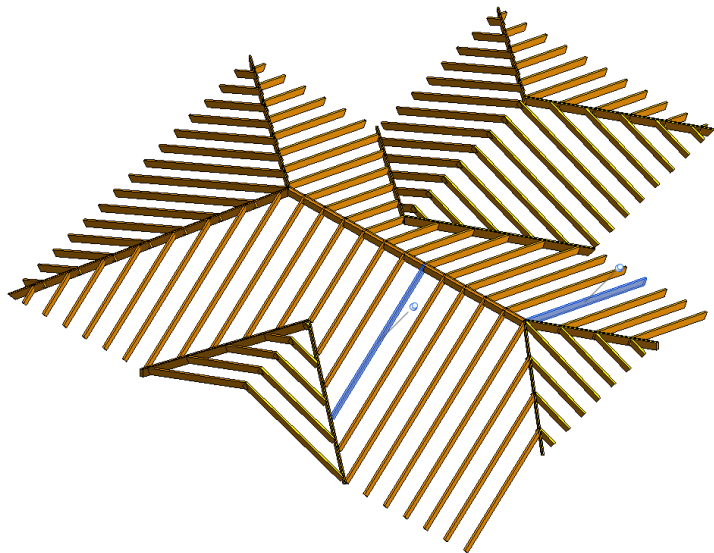


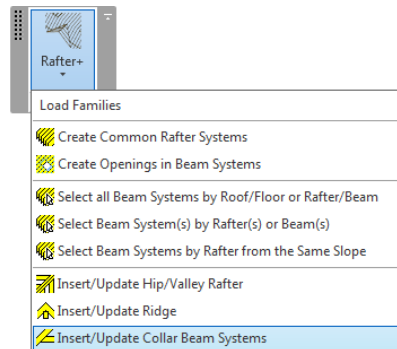


WOOD FRAMING RAFTER+ Insert / Update Collar Beams

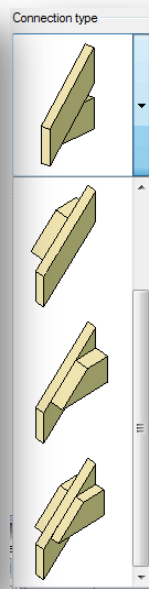
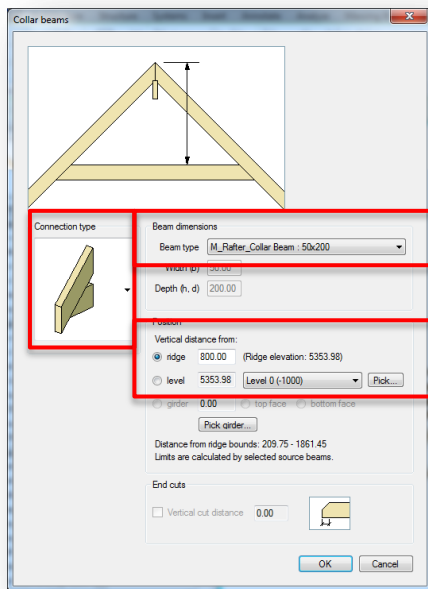
Insert Collar Beams



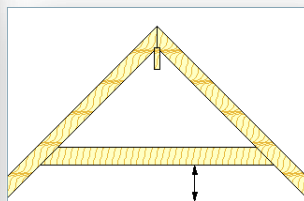
- Select any two rafters in adjacent slopes to insert collar beams (from...to).
- Select the Insert/Update Collar Beams function from the menu.



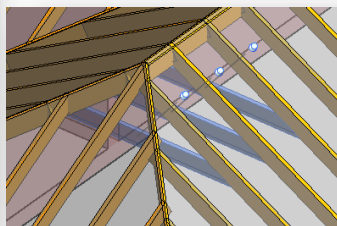
Configure Collar Beams



Vertical distance from level

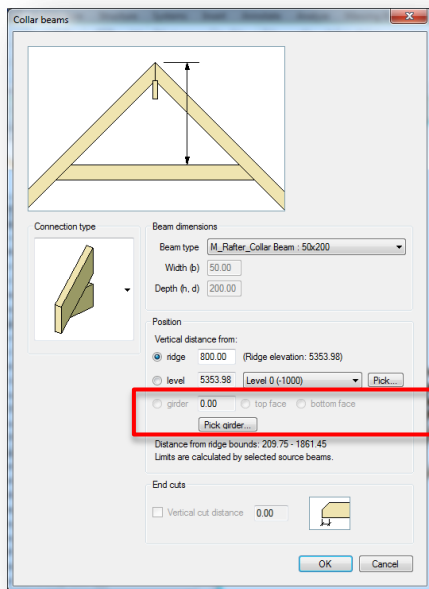


Collar beams created



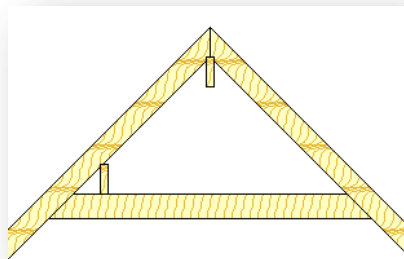
- Select Connection type.
- Select Collar beam type from framing families loaded in the project.
- You can choose to provide vertical distance from the ridge or from a level.
- Click the Pick... to inherit elevation from other element in the model.
- Pay attention to the boundary limits. If it turns red, then your distance is wrong.
- Click OK to create Collar beam system.

Configure Collar Beams

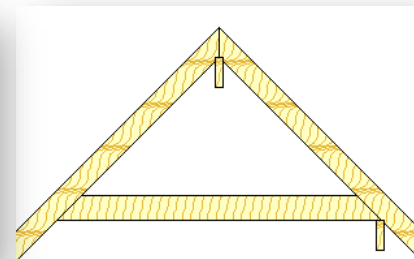


- You can pick girder if you want to locate collar beams on or under the girder beam.
- Select the placement face: top or bottom.

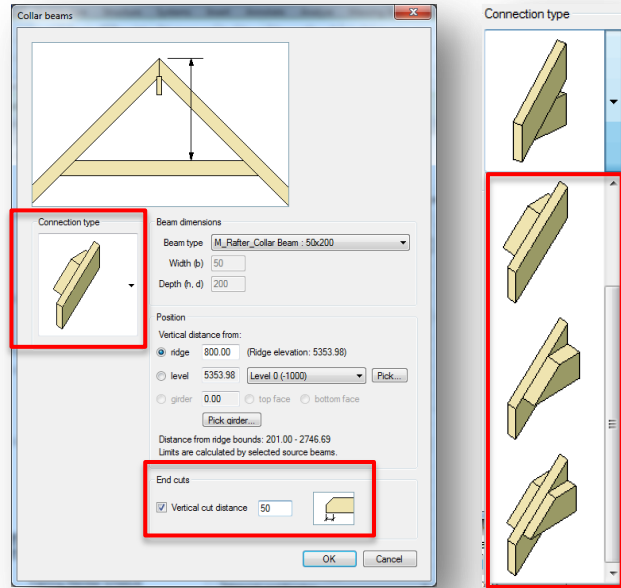
Bottom face



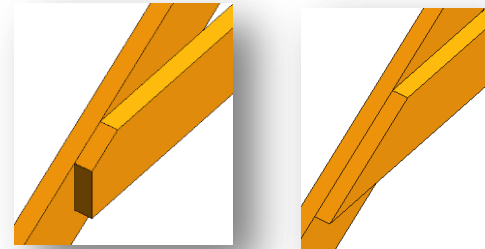
Top face



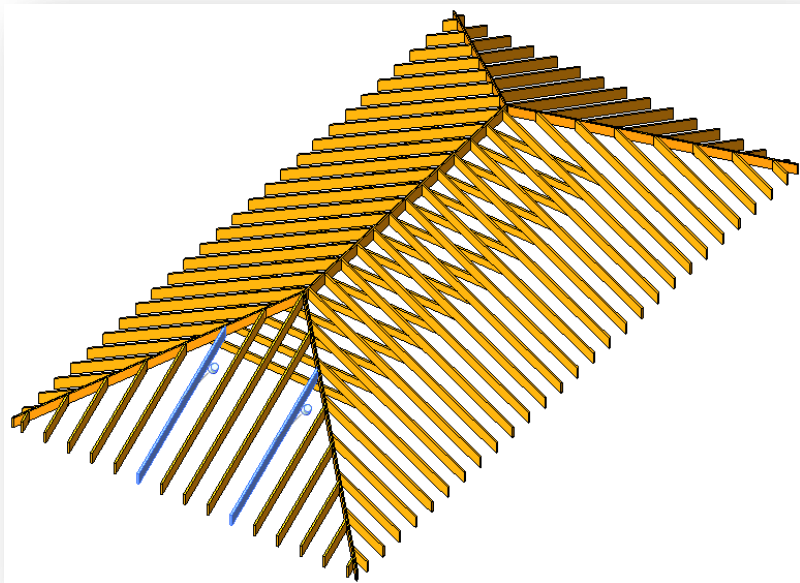
Configure Collar Beams



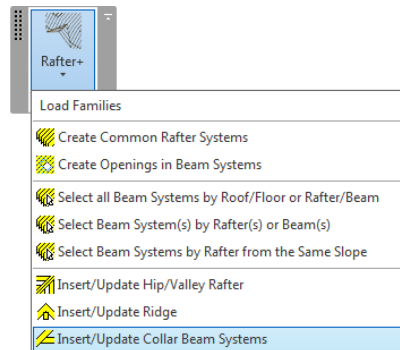
- Select connection type to connect collar beams to the sides of rafters, and modify type of end cuts.



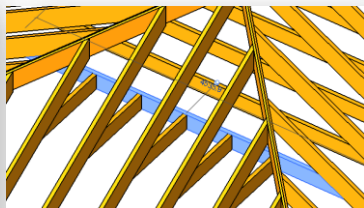
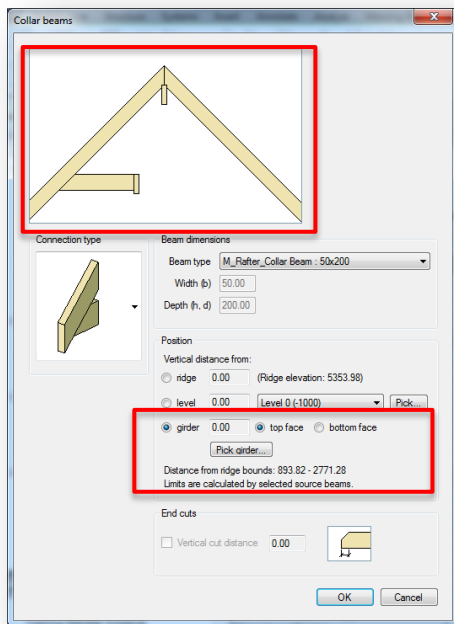
Insert Collar Beams II



- Select any two rafters from the same slope to insert collar beams (from...to).
- Select the Insert/Update Collar Beam Systems function from the menu.



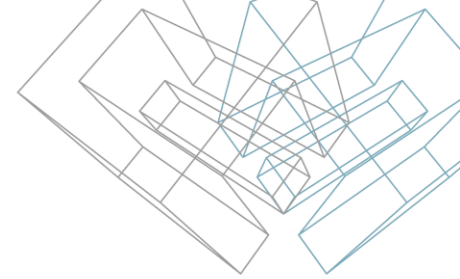
Configure Collar Beams II



- Select Connection type.
- Select Collar beam type from framing families loaded in the project.
- Pick girder.
- Click OK to create the Stub Joist system.

NOTE: picture is updated as you make selections.

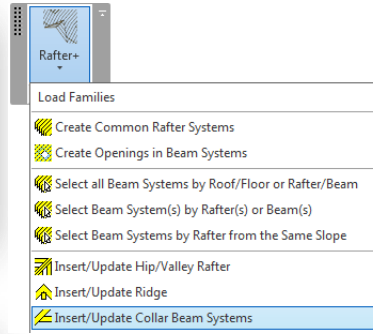
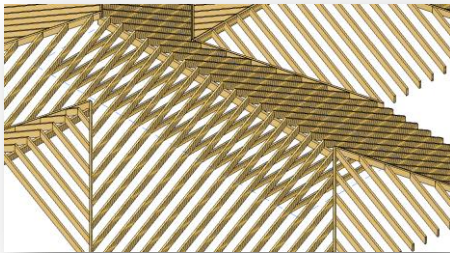
Update Boundary of Collar Beam System



Selected elements



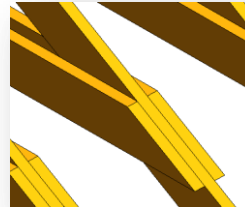
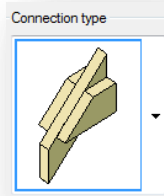
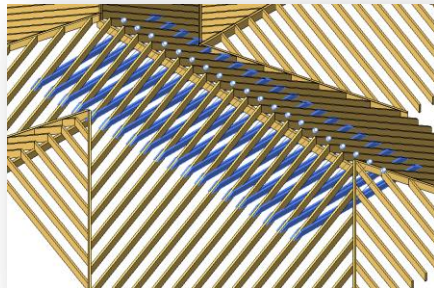
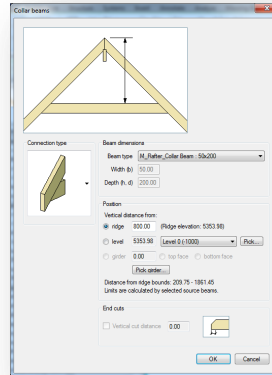
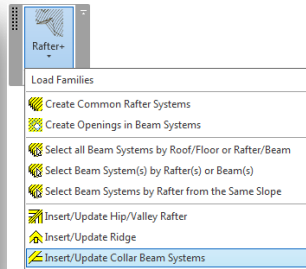
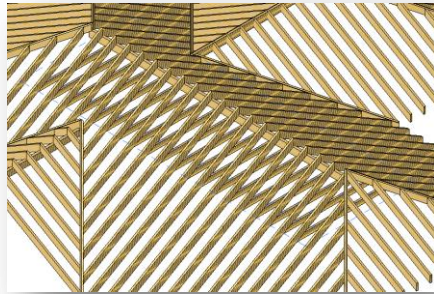
Updated Collar Beam system



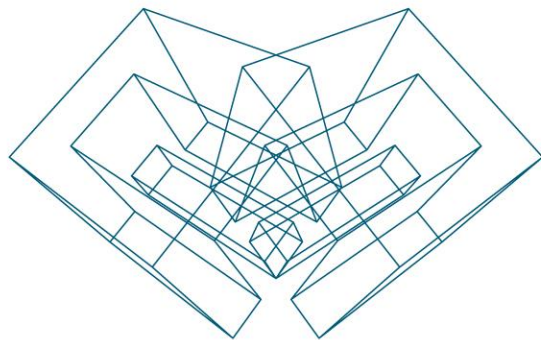
- Select Collar beam system and one rafter (the collar beam system will be extended or trimmed to this rafter).
- Select the Insert/Update Collar Beam Systems function from the menu.

NOTE: if you need to change collar beam dimensions or vertical distance, select the collar beam system only.

Update Parameters of Collar Beam System



- Select Collar beam system only.
- Select the Insert/Update Collar Beam Systems function from the menu.
- You can click the button Pick common rafter beam if you need to trim or extend the beam system.
- Make your changes in the configuration window, and click OK.



AGA CAD Ltd

T: +370 618 55671 | E: support@aga-cad.com | W: www.aga-cad.com