



TOOLS4BIM DOCK INSTALLATION & ACTIVATION GUIDE

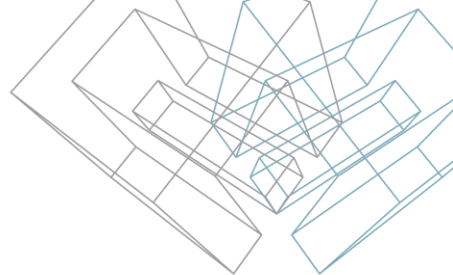
Installation Instructions

Content:

[Dock Installation Instructions](#)
[Product Installation Instructions](#)

DOCK INSTALLATION INSTRUCTIONS

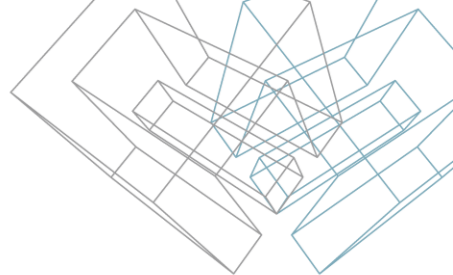
Before Installation: Important for Revit 2015 users



If you are already using of AGA CAD applications for **Revit 2015** version, it is necessary to **uninstall all AGA CAD 2015 version tools** before installing TOOLS4BIM Dock (but don't remove 2014 or older versions).

1. **Uninstall all AGACAD 2015 version tools:** go to **Control Panel > Programs and Features**, and remove all available programs on the list published by AGA CAD (Aga-Cad): *BIM Tree, Smart Assemblies, Smart Browser Manage or Smart Browser PRO, Smart Hangers, Smart Sprinklers, Insert Elements, Smart Legend or Dynamic Legend, Smart Coping or Sort&Cope, Smart Sheets, Smart Family or Smart Browser, Smart Opening or Cut Opening, Smart Walls, Sort Mark, Smart Window, RAS Manager, Smart Floors, Excel2R, Smart Dimensions or Quick Dimensions, Smart Select*. Also ITANNEX tools (*Smart Coordinates, Smart Review, Smart Filter*);
2. Make sure you have the latest Revit updates on your computer. For example, this is a link to Revit 2015 update release 5: <http://knowledge.autodesk.com/support/revit-products/downloads/caas/downloads/content/autodesk-revit-2015-update-release-5.html?v=2015>
3. Make sure your computer has Internet connection;
4. Make sure you have read/write permissions to application data folders. By default it is:
`C:\Users\[username]\AppData\Roaming`

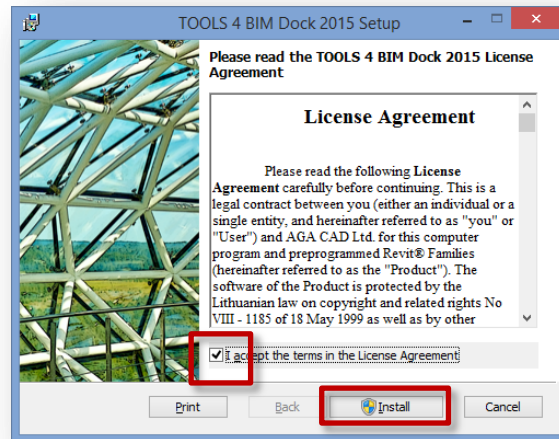
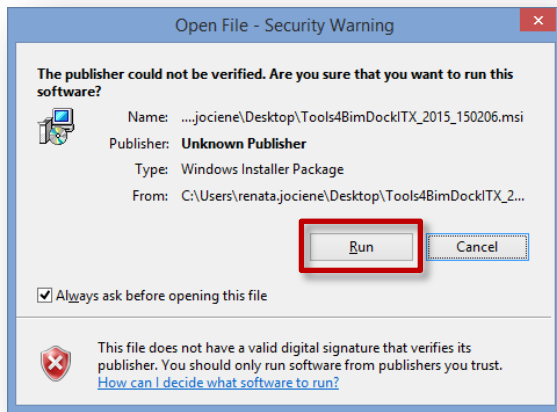
Installation Instructions



User has to be logged in as a local administrator. If you are logged in as local administrator simply double-click on installation file. But if you are not, then please right click on installation file and select “Run as administrator”.

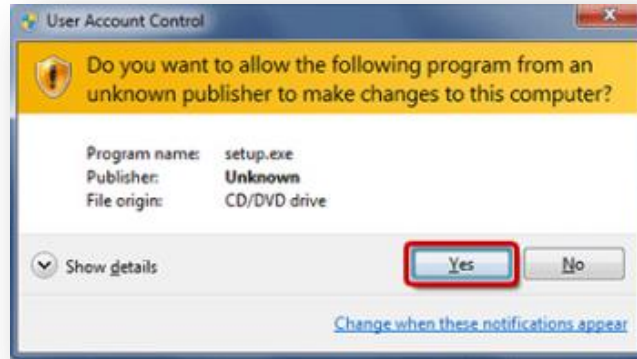
1. Please read license agreement, and if you agree select “I accept the agreement”

2. Select “Install”

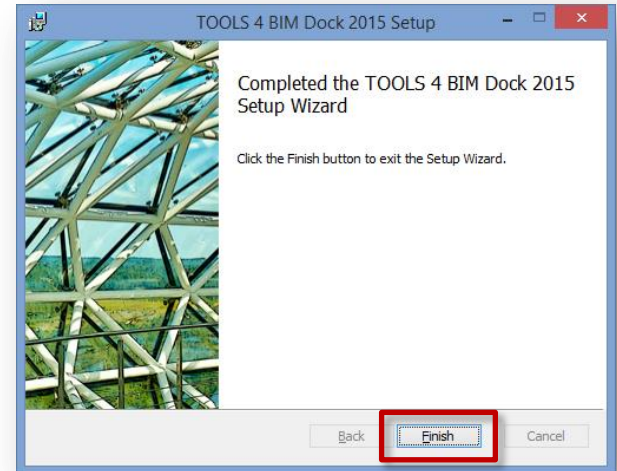


Installation Instructions

Note: if you get this message from User Account Control “Do you want to allow the following program an unknown publisher to make changes to this computer?” you have to press “Yes” for installation to continue:



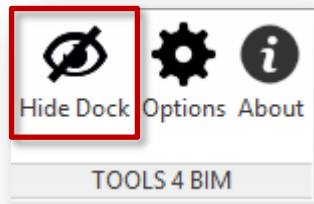
TOOLS 4 BIM Dock is installed!



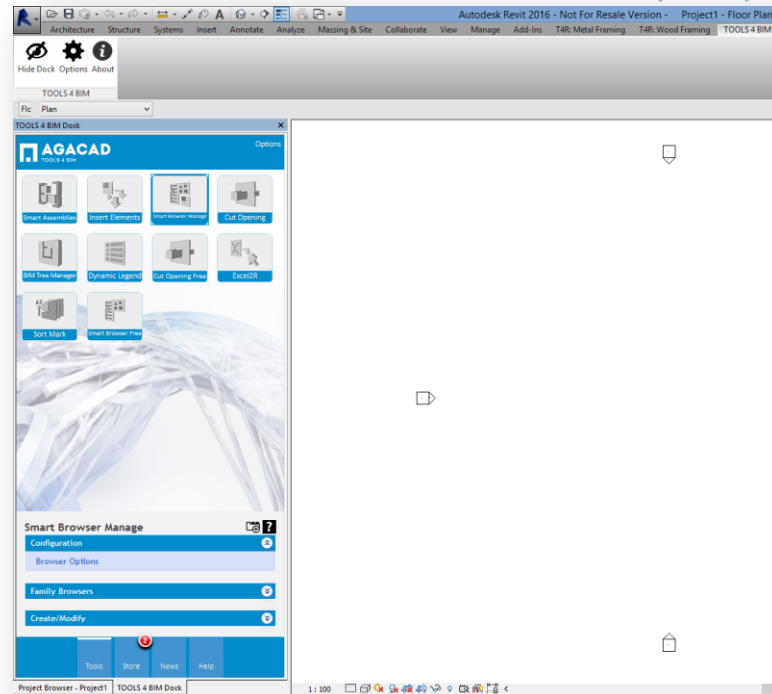
TOOL INSTALLATION INSTRUCTIONS

Tool Installation Instructions

1. Open Revit as administrator;
2. Find TOOLS 4BIM Dock. It is under TOOLS 4 BIM tab. You can easily show or hide it with this tab functionality:



Note: you can place Dock dialog to any Revit workplace, similarly to Properties or Project Browser.

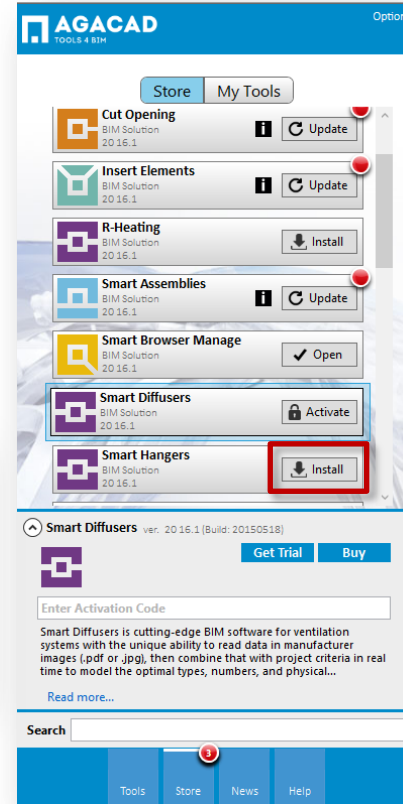
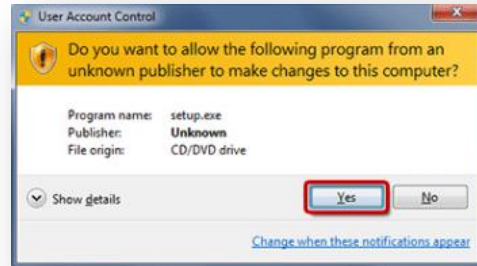
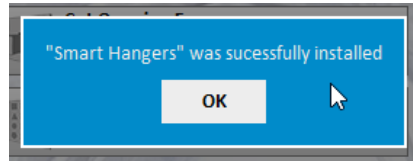


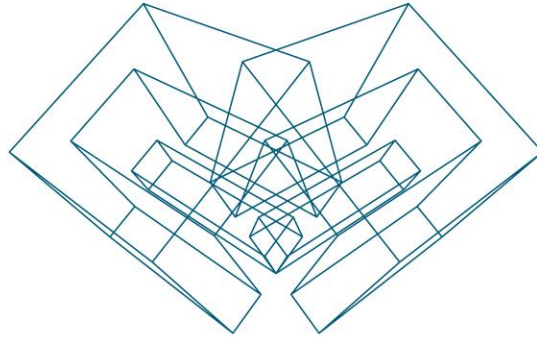
Tool Installation Instructions

3. All tools will be located in the Store tab. You can select a tool and install it into Revit.

Note: if you get this message from User Account Control “Do you want to allow the following program an unknown publisher to make changes to this computer?” you have to press “Yes” for installation to continue:

Selected product is installed!





ENJOY WORKING WITH OUR PRODUCTS!

AGA CAD Ltd

T: +370 618 55671 | E: support@aga-cad.com | W: www.aga-cad.com