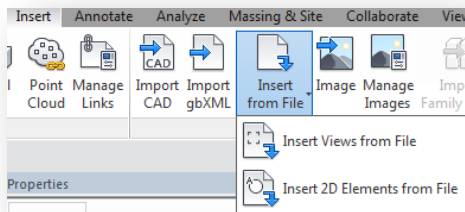




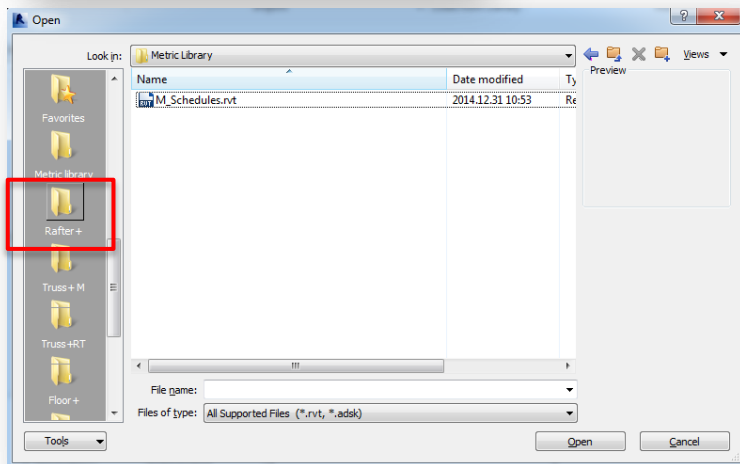
WOOD FRAMING RAFTER+

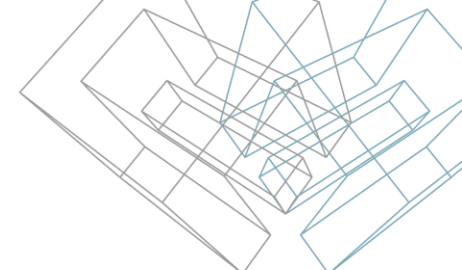
Scheduling and Sorting

Framing Member Schedules



- Rafter+ software installation includes some types of schedule views for roof framing members scheduling. You can find them in Metric (Imperial) Library Rafter+ folder.
- Schedules are loaded automatically to your project after you use command Load families.
- Other option you have is to use the **Insert from File...Views** command to insert schedules in a project or template.





Main Schedule

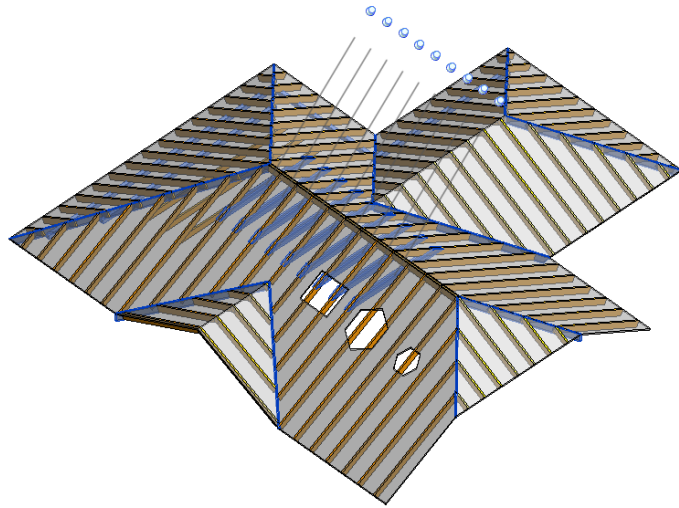
“Framing Member-Mark Definitions”

- This schedule includes a number of predefined shared parameters which are assigned to framing members. Schedule helps to define marking symbols to Sort and Mark procedures of framing members. A user has an option to define the same or different mark symbols (Framing Member Mark) to frame members. For example, the user can use the same or different marking for hip and valley jacks.
- The user can edit default values of shared parameters – ‘Framing Member Description’ or ‘Framing Member Mark’ and use these parameters later to sort and describe framing members in other schedules and tagging.

| <Framing Member - Mark Definitions> | | | |
|-------------------------------------|---------------------|----------------------------|---------------------|
| A | B | C | D |
| Framing Member | Framing Member Type | Framing Member Description | Framing Member Mark |
| Collar Beam | Beam | Stub Joist | SJ |
| Common Rafter | Rafter | Rafter | R |
| Double Collar Beam | Beam | Collar Beam | CB |
| Double Collar Beam | Rafter | Hip Rafter | HR |
| Double Collar Beam | Beam | Stub Joist | SJ |
| Ridge Board | Rafter | Hip Rafter | HR |

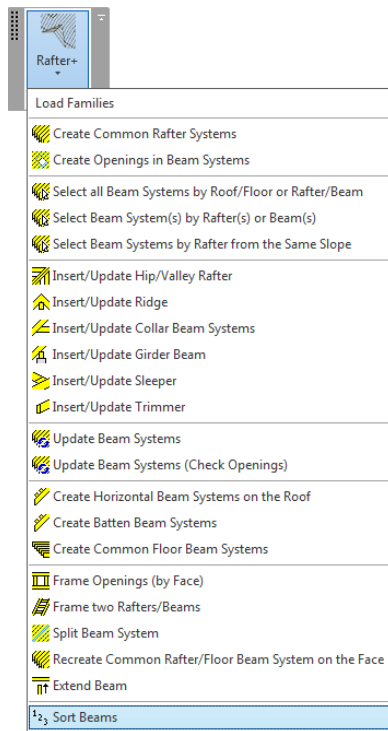
Framing Member-Mark Definitions

The user can use schedules to search and filter different framing members and elements. After selecting a field in the schedule table, all needed objects will be selected and shown automatically.



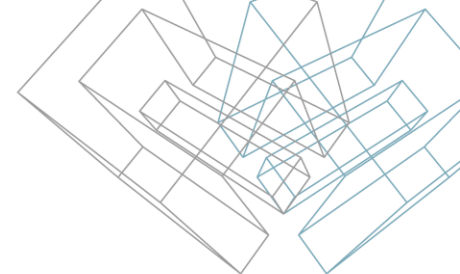
| <Framing Member - Mark Definitions> | | | |
|-------------------------------------|---------------------|----------------------------|---------------------|
| A | B | C | D |
| Framing Member | Framing Member Type | Framing Member Description | Framing Member Mark |
| Collar Beam | Beam | Stub Joist | SJ |
| Common Rafter | Rafter | Rafter | R |
| Double Collar Beam | Beam | Collar Beam | CB |
| Double Collar Beam | Rafter | Hip Rafter | HR |
| Double Collar Beam | Beam | Stub Joist | SJ |
| Ridge Board | Rafter | Hip Rafter | HR |

Function “Sort Beams”



- After editing Description and Mark fields the user can run the **Sort Beams** function. It writes results in shared parameter “FM SortMark”.
- All framing members will be grouped by Framing Member Mark and sorted (numbered) by geometrical parameters.

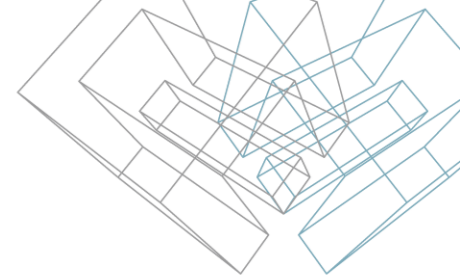
Other Schedules



| <Framing Member Schedule> | | | | | |
|---------------------------|---------------|-------------|------------|-------|---------|
| A | B | C | D | E | F |
| Framing Member | Framing Membe | FM SortMark | Cut Length | Count | Volume |
| Collar Beam | | | | | |
| Collar Beam | Beam | SJ1 | 15267 | 3 | 0.14 m³ |
| Collar Beam: 3 | | | 15267 | | 0.14 m³ |
| Common Rafter | | | | | |
| Common Rafter | Rafter | | 321014 | 115 | 3.21 m³ |
| Common Rafter: 115 | | | 321014 | | 3.21 m³ |
| Double Collar Beam | | | | | |
| Double Collar Beam | Beam | | 31177 | 9 | 0.56 m³ |
| Double Collar Beam | Rafter | | 73634 | 14 | 0.96 m³ |
| Double Collar Beam: 23 | | | 104811 | | 1.52 m³ |
| Ridge Board | | | | | |
| Ridge Board | Rafter | HR11 | 7035 | 1 | 0.16 m³ |
| Ridge Board: 1 | | | 7035 | | 0.16 m³ |
| Grand total: 142 | | | 448127 | | 5.03 m³ |

- Software installation includes other examples of schedule views. The user can edit properties of schedules if needed and use them in the project.

Tagging



Properties

M_Rafter_Common Rafter
50x200

Structural Framing (Joist) (1) Edit Type

Volume 0.026 m³

Identity Data

| | |
|----------------------------|----------------------|
| Framing Member Volume | 0.000 m ³ |
| Framing Member Type | Rafter |
| Framing Member Mass | 0.000 kg |
| Framing Member Mark | R |
| Framing Member Description | Rafter |
| Framing Member Cut Length | 0.0 |
| Framing Member | Common Rafter |
| Framing Layer | Rafter |
| Framing | Roof |
| FM SortMark | R26 |
| FM Number of Connectors | 0.000000 |
| Image | |
| Comments | |
| Mark | |

Phasing

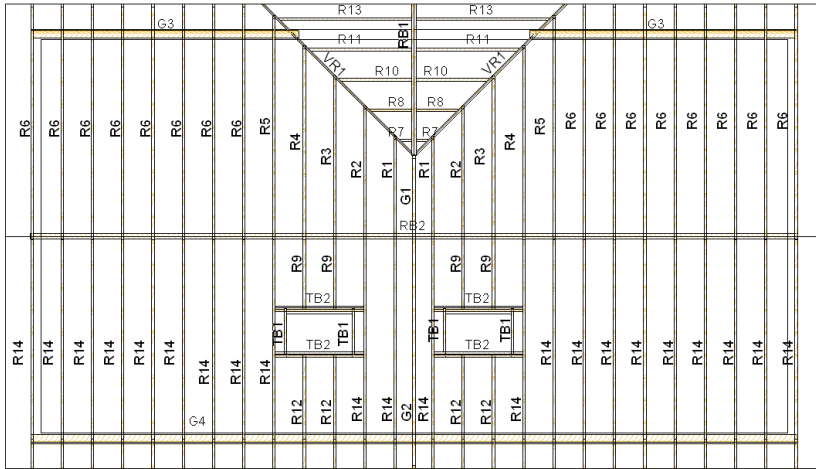
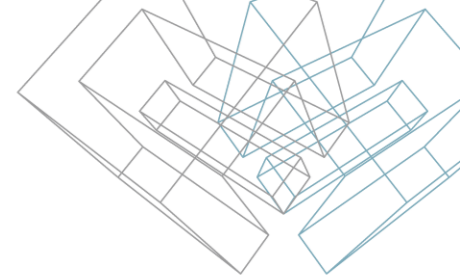
| | |
|------------------|------------------|
| Phase Created | New Construction |
| Phase Demolished | None |

[Properties help](#) Apply

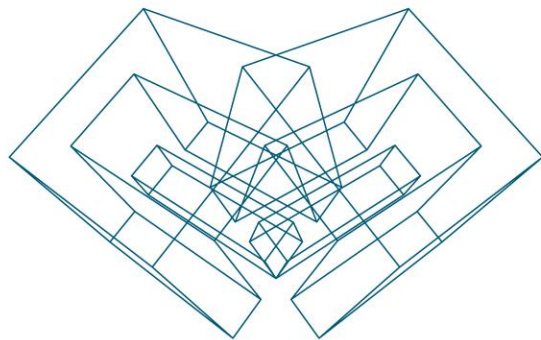
- +..... M_Level Head - No Bubble
- +..... M_Material Tag
- +..... M_North Arrow-1
- +..... M_Path Reinforcement Symbol
- +..... M_Path Reinforcement Tag
- +..... **M_Rafter_Framing Member Sort Mark Tag**
- +..... M_Rebar Tag
- +..... M_Revision Tag
- +..... M_Section Head - Filled
- +..... M_Section Head - No Arrow

- The user can tag all framing members very quickly using the 'M_Rafter_Framing Member Sort Mark Tag'.
- Every member will be tagged as it's assigned in the schedule "Framing Member-Mark Definitions" and the original number will be given according to member length.

Tagging



If you don't have M_Rafter_Framing Member Sort Mark Tag in your project or template, load it using the command **Load Family**. You can find it in Metric (Imperial) Library Rafter+ folder.



AGA CAD Ltd

T: +370 618 55671 | E: support@aga-cad.com | W: www.aga-cad.com