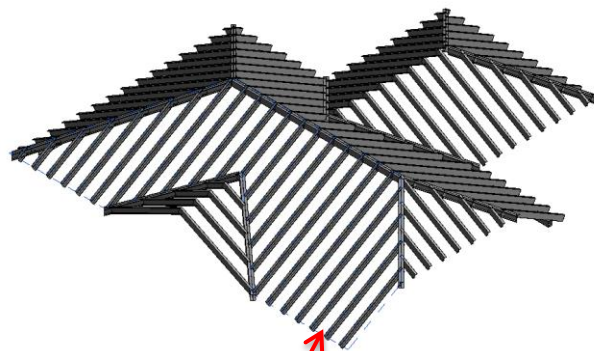
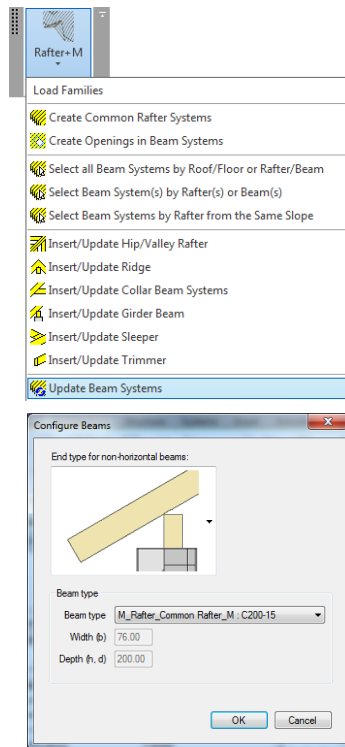


# METAL FRAMING RAFTER+ Update Beam Systems

# Update Rafter Beam Systems



All instances of  
beam system  
selected

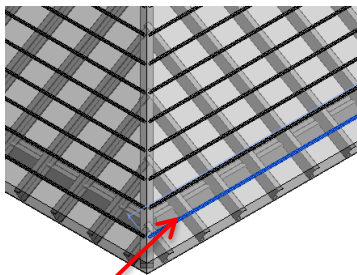


- Select multiple or all instances of rafter beam systems.
- Select the **Update Beam Systems** function from the menu.
- If the *Do not change configuration of other rafter systems* option is selected:
  - no changes to beam dimensions are made;
  - joints and cuts are updated.
- If the *Apply this configuration to all selected rafter systems* option is selected:
  - end cut and cross section dimensions are updated;
  - joints and cuts are updated.

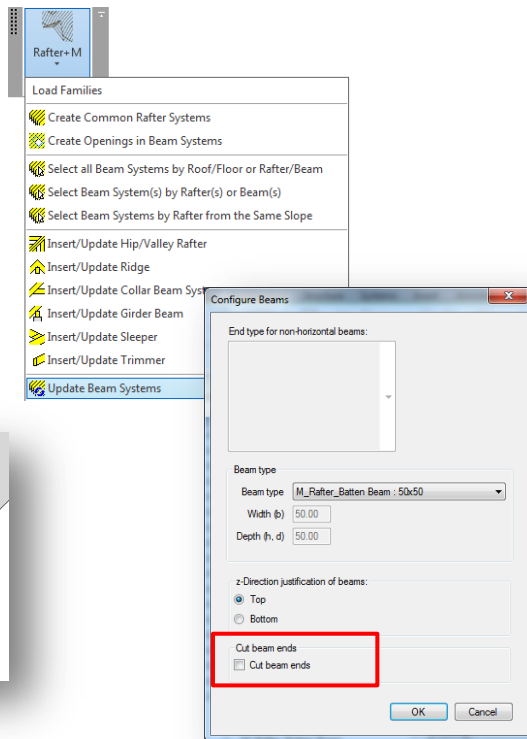
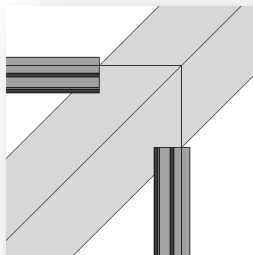
## NOTE:

- Update mode doesn't appear when you want to update only one beam system.
- Please see **Select Beam Systems** document for more information on how to quickly select required beam systems.

# Update Batten Beam Systems I

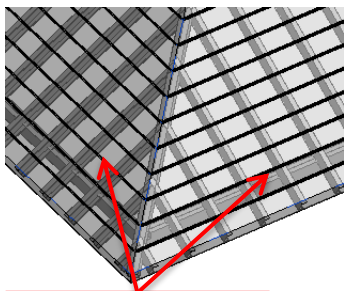


Selected single instance of batten beam system

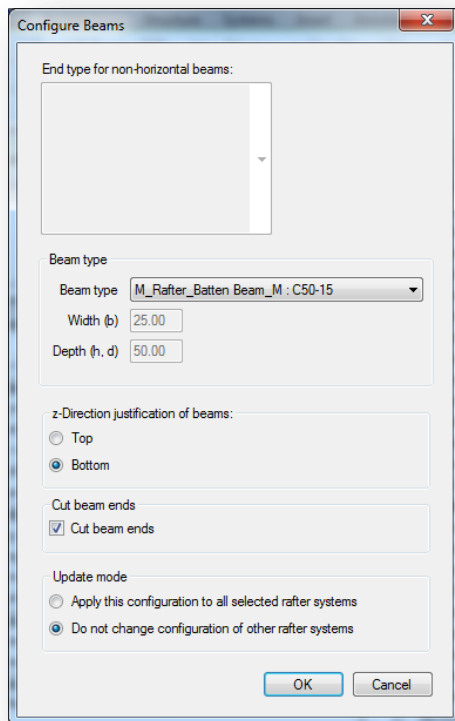
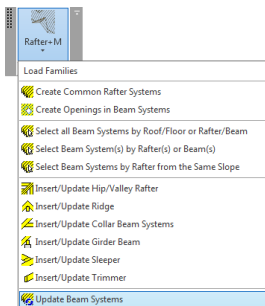


- Select single instance of the batten beam system.
- Select **Update Beam Systems** from the menu.
- Select batten beam type from structural framing families existing in the project.
- Edit z-Direction justification of beams if necessary.
- Cut beam ends option works on standard rectangular sections. You have to tick the *Cut beam ends* checkbox, and click OK.

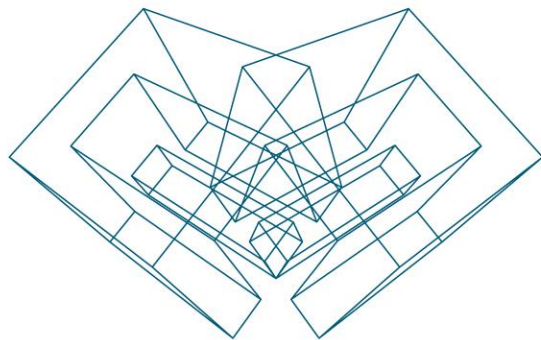
# Update Batten Beam Systems II



Selected multiple instances of batten beam systems



- Select multiple instances of batten beam systems.
- Select the **Update Beam Systems** function from the menu.
- If the *Do not change configuration of other rafter systems* option is selected:
  - no changes to beam dimensions are made;
  - joints and cuts are updated.
- If the *Apply this configuration to all selected rafter systems* option is selected:
  - end cut and cross section dimensions are updated;
  - joints and cuts are updated.



AGA CAD Ltd

T: +370 618 55671 | E: [support@aga-cad.com](mailto:support@aga-cad.com) | W: [www.aga-cad.com](http://www.aga-cad.com)