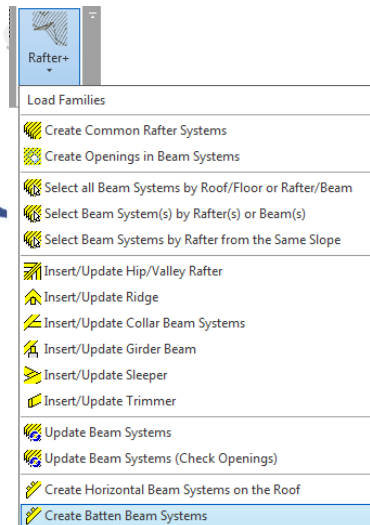
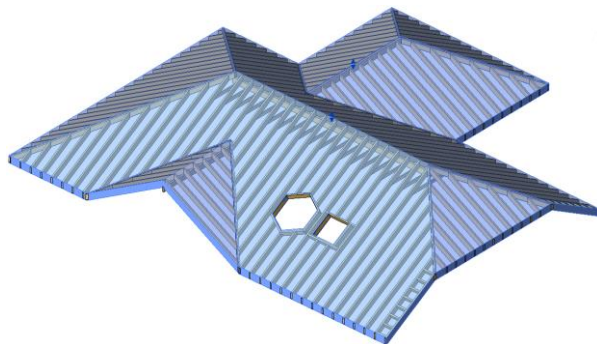


An abstract, three-dimensional wireframe model of a wooden batten beam system, rendered in a light blue color. The model shows a complex arrangement of interconnected rectangular frames, representing the structural components of a roof or floor system. It is positioned in the upper right quadrant of the image, partially overlapping the background.

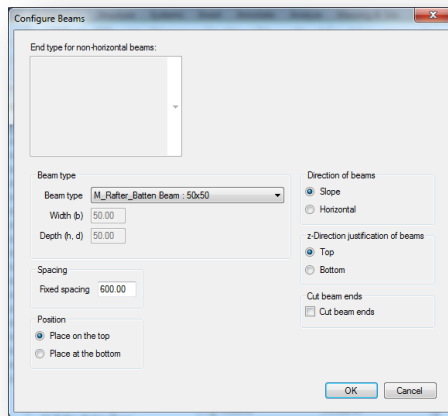
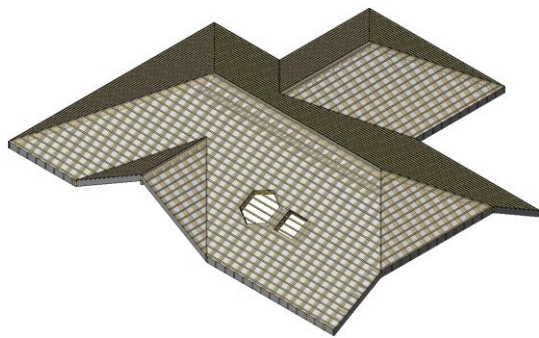
WOOD FRAMING RAFTER+ Create Batten Beam Systems

Create Batten Beam Systems

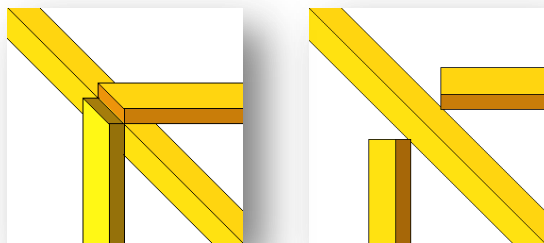


- Select a roof.
- Select **Create Batten Beam Systems** from the menu.

Create Batten Beam Systems

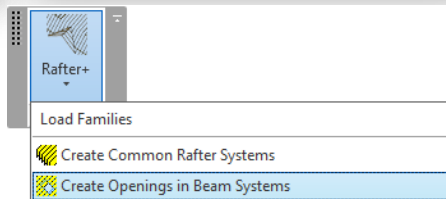
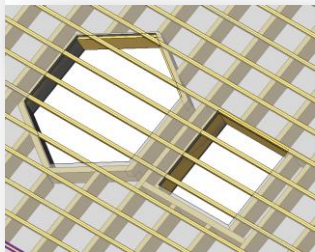
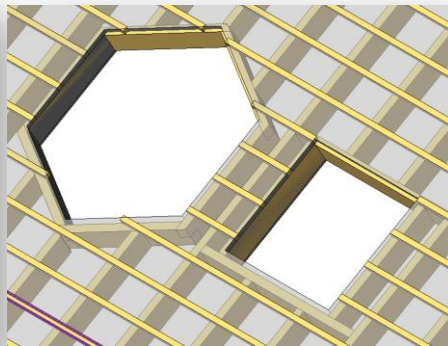
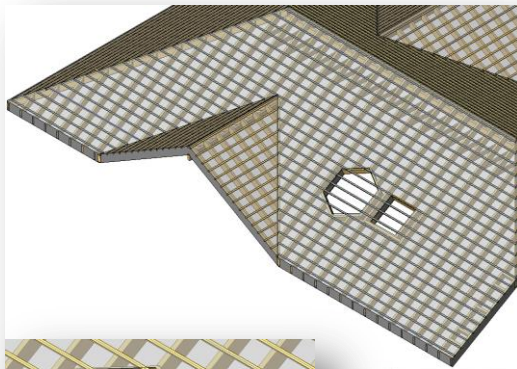
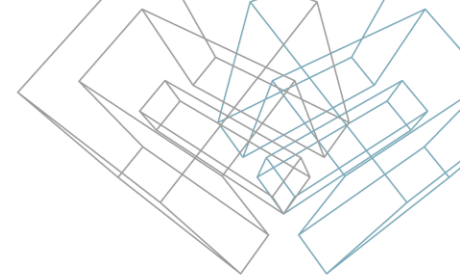


Ticked and unticked Cut beam option results



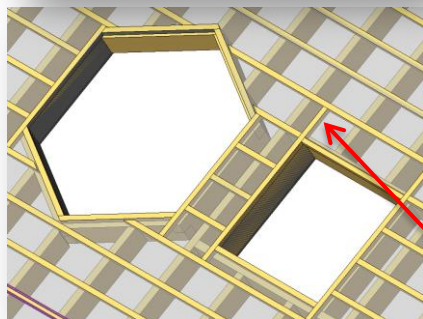
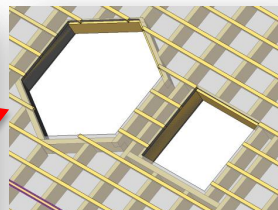
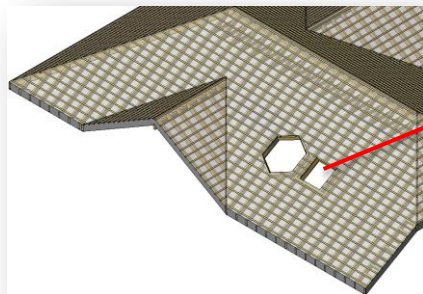
- Select batten beam type from existing structural framing families in the project.
- Select the direction of beams.
- Select z-Direction justification of beams.
- Tick the *Cut beam ends* checkbox if necessary.
- Enter a value to fixed Batten spacing.
- Select placement of rafters. They can be placed on the top or at the bottom of the roof, and click OK.

Create Openings in Batten Beam System

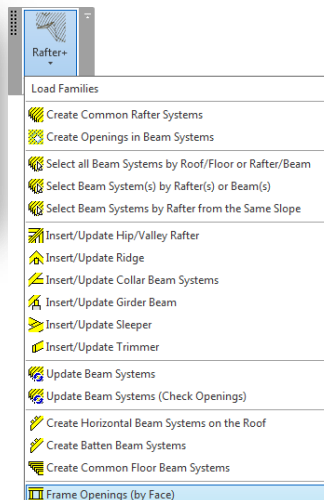


- Select Batten Beam System.
- Select the **Create Openings in Beam Systems** function from the menu.

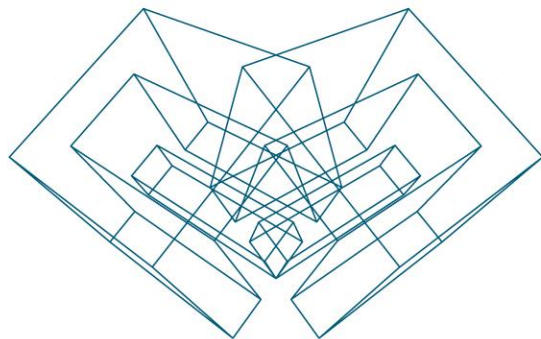
Frame Openings in Batten Beam System



Note that framing elements perpendicular to battens are automatically extended to the nearest batten beam.



- Select Batten Beam Systems.
- Select the **Frame Openings (by Face)** function from the menu.
- After framing is completed, select batten beam systems again, and run the function **Update Beam Systems** to update joints and cuts.



AGA CAD Ltd

T: +370 618 55671 | E: support@aga-cad.com | W: www.aga-cad.com